

The WINGFOOT CLAN

A Subsidiary of

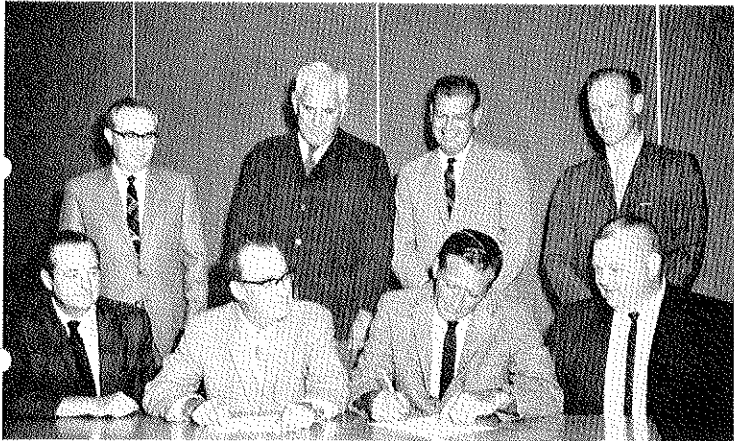
Goodyear Atomic Corporation

The Goodyear Tire & Rubber Company

Volume 16

Pike-ton, Ohio July, 1969

Number 7



STAMP OF APPROVAL by UPGWA president Clarence Canter is placed on the three-year contract agreed upon by Goodyear Atomic and members of United Plant Guard Workers of America — Local 66. Looking on are members of the Company and Union negotiating teams. Seated (l to r) Bob Boeys, Lloyd Fuller, Canter, and Bob Brewer. Standing (l to r) Ralph Channel, Ora Tussey, Dee Hughes, and Bill Bright.

New Three Year Pact OKed By GAT Guards

Several days of negotiations were ended successfully when a new contract between GAT and the International Union, United Plant Guard Workers of America was approved by Local 66 members, effective May 27.

The new three-year agreement provides substantial wage and fringe benefit improvements, including a general pay hike of 5.5 percent (18c per hour) plus 6c adjustment in 1969, 4.5 percent (16c per hour) increase in 1970 and a wage re-opener in 1971.

Fringe benefits agreed upon amounted to 7c per hour added cost for 1969. Included in the fringe benefit package were:

MEAL ALLOWANCE

Overtime meal allowance increased from \$1.25 to \$1.75.

INSURANCE

Fully paid basic hospital-surgical insurance and 50% paid major medical insurance resulting in premium reduction of \$4.94 per month for insured family member. Improved life insurance schedule, raising maximum from \$7,000 to \$8,500.

HOLIDAY

Additional Holiday at Christmas.

VACATION

Improved vacation schedule for employees from 10 to 15 years service and for 20 or more years service.

SERVICE

Restoration of lost service for all employees who were recalled after 3 plus years on layoff status. (Restoration effective after 3 years returning to payroll.)

SICK LEAVE

Improved sick leave schedule — 16-hour waiting period for a person admitted as inpatient to hospital for medical treatment or surgery.

LAYOFF ALLOWANCE

Extended layoff allowance schedule.

SHIFT PREMIUM

Shift differentials increased from 14c to 15c for 4-12 shift and from 20c to 22c for 12-8 shift.

GAT Kicks Off Carver Fund Drive

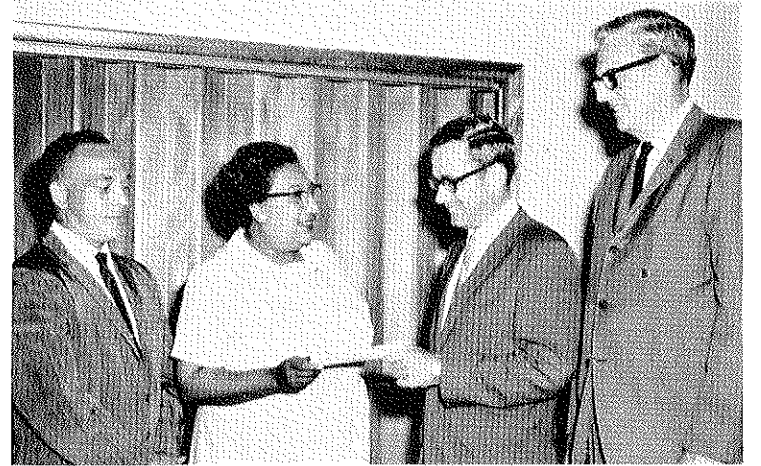
Chillicothe Carver Community Center fund raising drive got off to a good start when Goodyear contributed \$5,000 toward their building fund.

J. J. Eyre, Superintendent — Equal Opportunity Activities kicked off the drive by presenting the \$5,000 check to David Thomas, President of Carver Community Center, and to Marjorie McIntyre, the center's director. G. H. Reynolds, general manager, and John S. Hamilton, president of Wear-Ever, Inc., and chairman of the building fund, were also on hand for the presentation.

Reynolds commented that through the years Goodyear has endeavored to do its share in local communities. Contributions to worthy causes like the Carver Building Fund, help to make our communities a better place to work and live.

Reynolds noted that GAT and its employees have acquired the reputation of being good citizens by working and supporting countless community activities.

Carver Community Center has



CARVER COMMUNITY CENTER received a \$5,000 boost toward construction of new facilities recently when J. J. Eyre, Superintendent — Equal Opportunity Activities (2nd from r) presented the check to (l to r) David Thomas, president of the center, Marjorie McIntyre, director, and John Hamilton, Building Fund Chairman and president of Wear-Ever, Inc.

its sights set on \$150,000 for their new building. Each week some 800 adults and children are provided with instructional, vocational and recreational programs. The new center will provide space for new pro-

grams and an expansion of current activities.

Local drives in the four-county area have benefited by receiving over \$50,000 in contributions from Goodyear since the plant was built.

Goodyear On Threshold Of Its Most Exciting Era — De Young

Picturing Goodyear on the threshold of its "most exciting era," Board Chairman Russell DeYoung has challenged employees to work toward a "new plateau" and a \$4½-billion sales year by 1973.

Addressing the annual Interplant Tire Development Conference in Akron recently, DeYoung gave a pat on the back to the tire development organization for its contributions to Goodyear's record sales year in 1968 of more than \$2.9-billion.

"With any kind of luck at all," DeYoung said, "our sales should pass the \$3 billion mark this year, putting us on an entirely new plateau in American Industry."

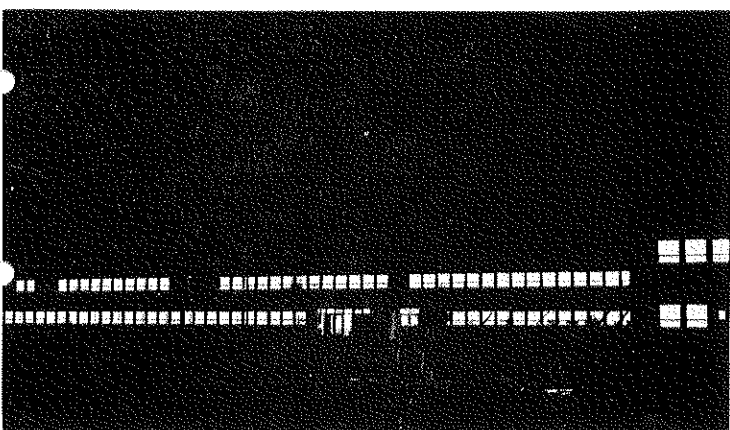
Reviewing plans for record capital expenditures to be made this year, DeYoung laid down a challenge:

"If for any reason we have serious product problems, much of this investment in the success and growth of our company is wasted. While many factors are involved in our quality level, you men in development hold the initial key. One wrong turn could lock out any hope for production, sales and the other departments which rely so heavily on you.

"Yours is an awesome responsibility. And your task becomes tougher day by day.

He pointed to the "physical demands on our products," the company's stringent quality controls standards, and government regulations regarding standards.

"The extra margin of quality" set by Goodyear is "essential to us as industry leaders," the board chairman said.



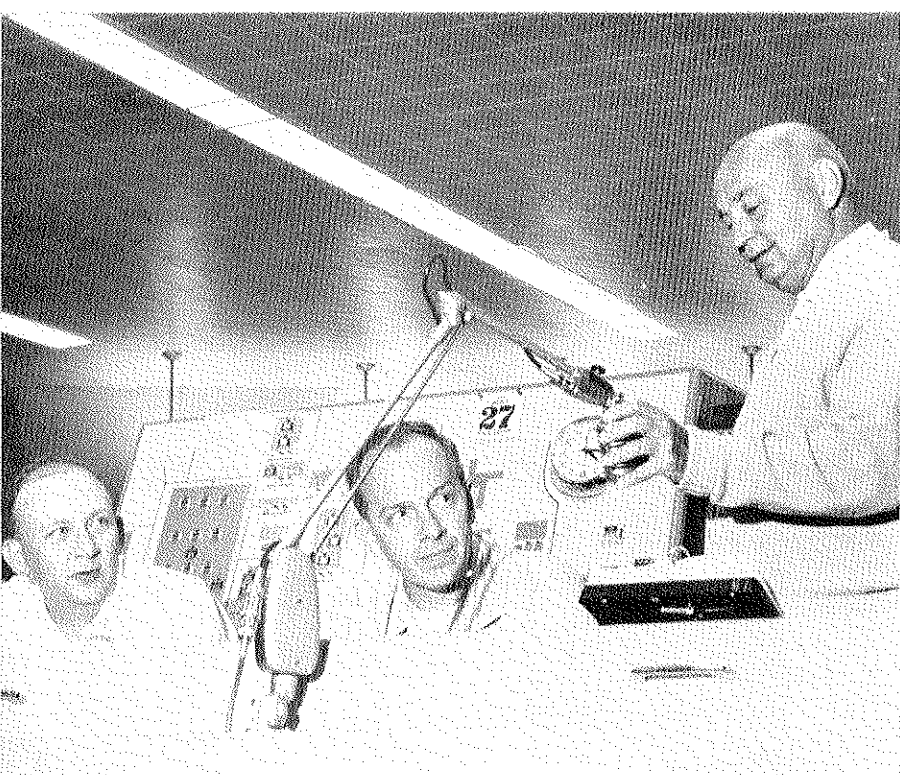
IN A DIFFERENT LIGHT — The administration building at night presents quite a different picture to GAT shift workers as they enter the plant. The Clan along with photographer Steve Kohut, D-761, visited plantsite on afternoon and midnight shifts to talk to GAT's night people and find out "what goes" on shift. (See centersection).

Lying Down On The Job??

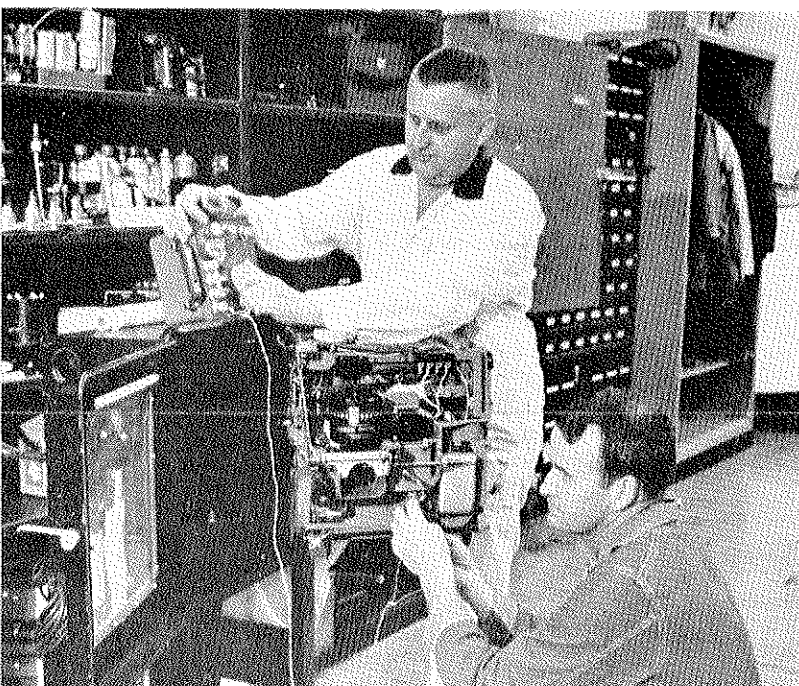
Lying down on the job at GAT is out of the question . . . almost, but that's exactly what we would like each GAT employe to do July 14 and 15 when the Bloodmobile unit visits plantsite.

As usual, facilities will be set up in the south wing of the X-100 Building. Donations will be accepted July 14 from 12:00 noon until 6:00 p.m. and July 15 from 7:00 a.m. until 12:00 noon.

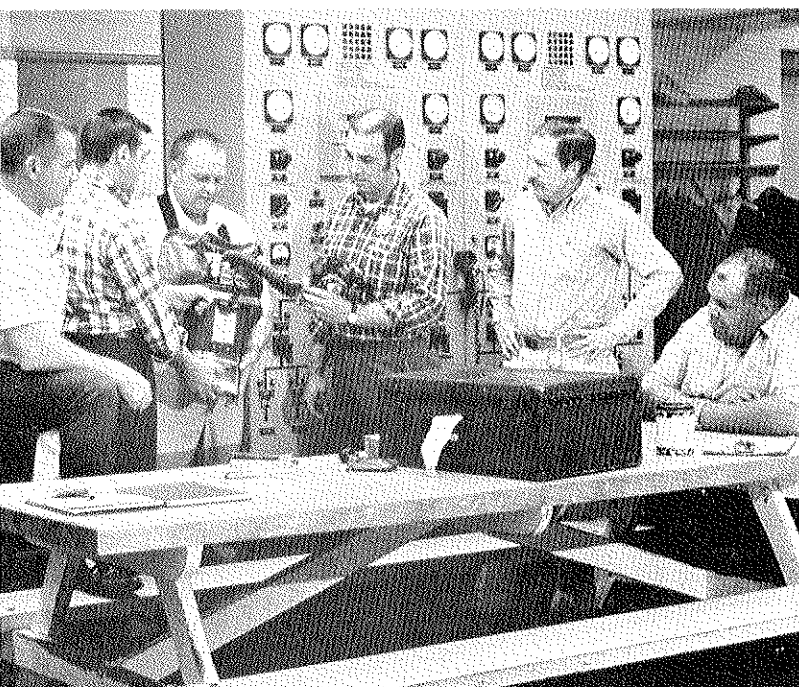
In January employes donated a generous 198 pints to supply our needs. Now it's time to replenish our supply: So make plans to lie down on the job July 14-15 when the Bloodmobile visits plantsite.



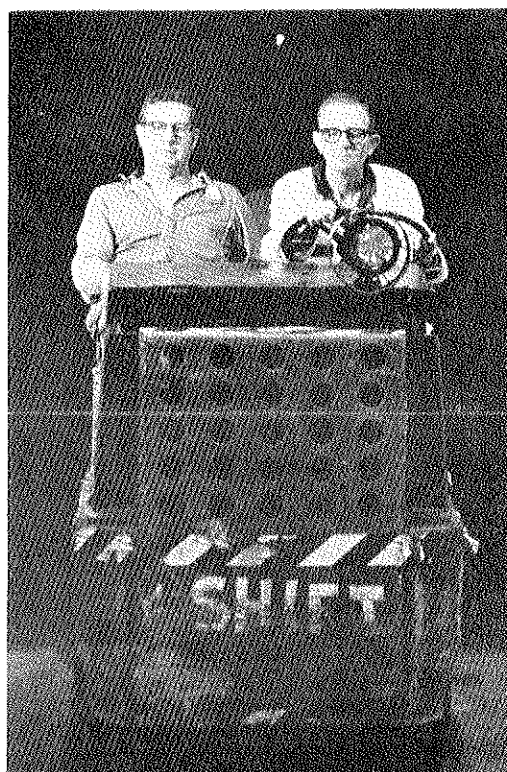
EFFICIENT COMMUNICATIONS between the Plant Control Facility (PCF) and shift personnel is essential to Shift Superintendent Sam Dirmeyer (r) and production members Jim Brown (l) and Bill Welch.



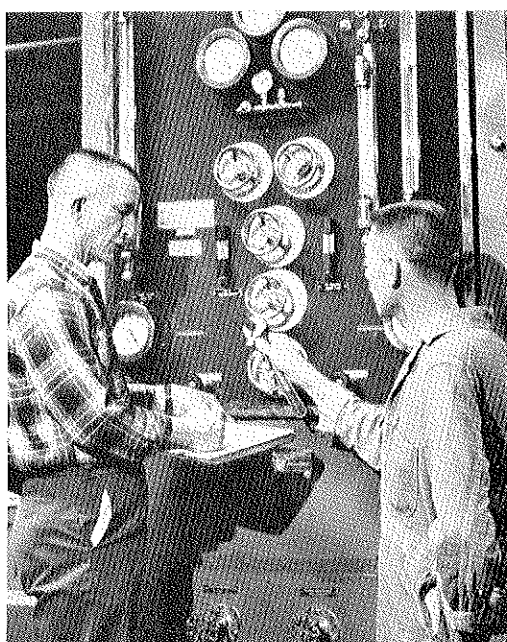
PRECISE CARE of the thousands of instruments is no small chore, but instrument men James Vande Linde and Frank Hornback do a good job of it round-the-clock.



SAFETY like shift work is a 24 hour a day, 7 day a week job. Competition for the annual shift safety trophy is keen, and each shift is proud of its record. A shift safety meeting in Process Area 2 gives Bill Durbin, Frank Perry, Glen Skidmore, Charles McCann, Karl Murray, and Charles Howard a chance to brush up on protective equipment uses.



OUT OF THE DARKNESS maintenance mechanics Ralph Bradley and Ed Nichols return for their next job assignment.



ROUND-THE-CLOCK CARE by operator Paul Perroud (l) and maintenance mechanic Joe Henson is needed to keep the nitrogen facility at peak efficiency.



BLANKET OF DARKNESS covering the plant is broken only by the twinkle of lights as night owl Charlie Osborn (D-113) enters the plant for a night's work.

GAT'S NIGHT

When typewriters are silenced, tools home — their day's work is just beginning. For us, it's time to go to bed and are ready for a good night's sleep.

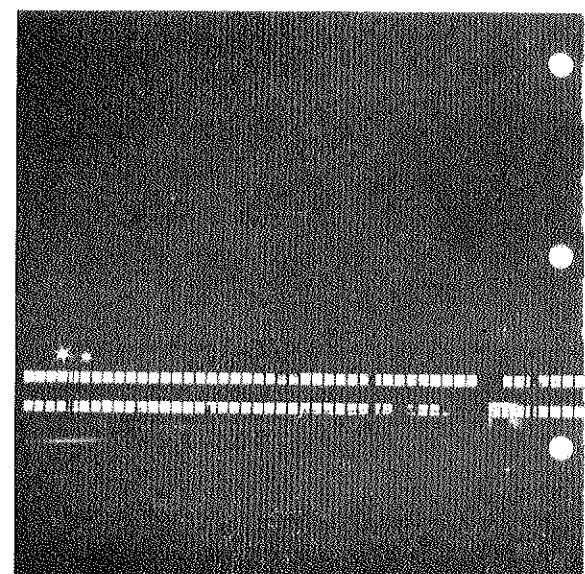
These are the night people — the 300 workers and who live and work in another significant to GAT's operation.

Day shifters depart, shadows lengthen, but at GAT continues just as it did during the plant and only by the darkness can you see the work.

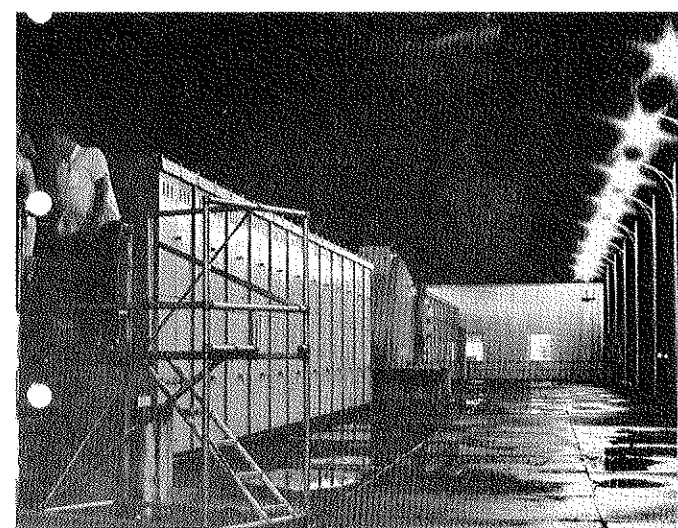
Production is a never-ending 7 day, 24 hour and holiday job, and GAT's shift workers keep the clock operation.

Those who work afternoon or night shifts, living on odd hours and weekends curtains soon for the week for uncrowded leisure time.

Things are different working shifts. Safety is done after day shifters depart; others are done during the night. However, the element remains unchanged — Goodyear is the Company and are pretty much the same.



SHIFT WORKERS VIEW sparse parking lots and deserted buildings that are usually full — cold electric lights reflect on the pavement.



MIDNIGHT INSPECTION
Reflections of light and dark greet power operator Harold Everett as he checks switchyard electrical apparatus following a thunder storm.



HUSTLE AND BUSTLE of blueprints, conversations and calculators fall away to stillness and silence. The quiet is broken only by Lou (Doc) Harris (D-426) as he puts "the sparkle" in engineering's floors.

T PEOPLE

Photographs by
Steve Kohut

way, and most of us think about going
owners start working about the time most
rep when we begin a new day.

workers who are seldom seen by their fellow
Yet their contribution is important and

grow deserted and quiet, but production
nt hours. Activities continue inside the
midnight instead of noon.

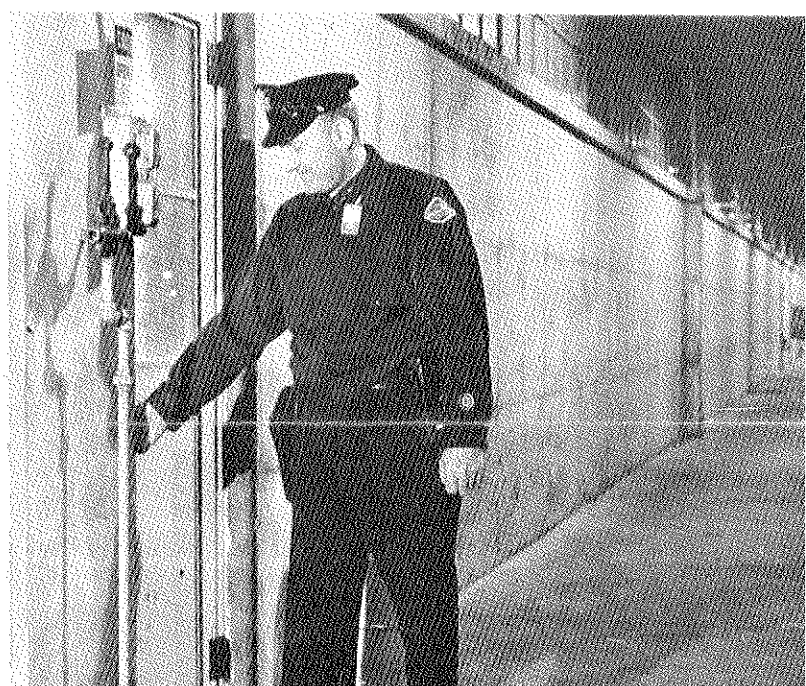
365 days a year, Saturday, Sunday,
vital link in the plant's continuous round-

quickly adapt to a different way of life. Work-
rities, but it also provides time off during

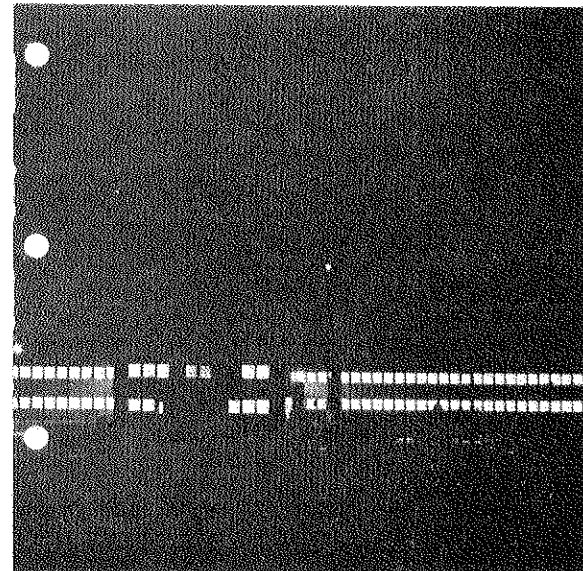
the jobs of the night people can only be
ry to maintain round-the-clock opera-
atter how different shift work may be, one
ople. On shift or off they are the lifeblood
ight or day.



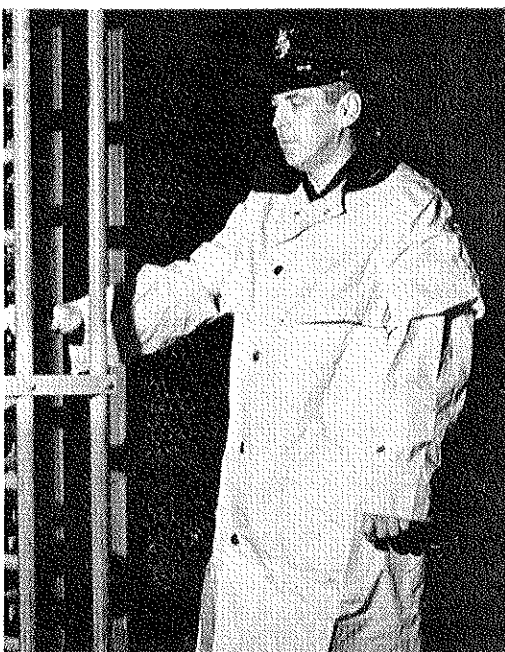
MAINTENANCE AREAS take on a deserted look for Cecil Cretsinger (1) (D-426) and Woody Hyland (D-731) as they put their night time hours to good use.



DAYSHIFTERS DEPART leaving deserted buildings and isolated areas under the care of Bill DeAtley as he makes nocturnal rounds.



warm sunshine. This is the Goodyear Atomic that the
h people know.



ALL IS SECURE for night Patrolman John Crabtree as he double checks plantsite perimeters.



BREAKFAST — LUNCH — DINNER?? What would you call a meal at 9:00 p.m. or 3:00 a.m.? With the cafeteria closed, the shift personnel have no problem eating — they just stay on the job! Night owl picnickers are (l to r) Ralph Schisler (D-816), Hobart Baldwin (D-814), Randy Dick (D-816), Charlie Wakefield (D-814), and John Leeth (D-814).

Rides - Games - Prizes --- Set For July 12

DATELINE . . . CAMDEN PARK . . . JULY 12
17TH ANNUAL FAMILY PICNIC

The 1969 picnic committee reports park rides and facilities are polished and ready for the invasion of some 3,000 Goodyearites. Latest reports from the Huntington weatherman indicate a favorable day is in store for all. To insure an enjoyable day, park rides have been reserved from 12:00 noon until 5:00 p.m. for all employees and their families with many games and prizes on tap for adult contestants.

Completion of the four lanes on Route 52 and the opening of the new Huntington bridge two miles south of Chesapeake, Ohio, will make travel to and from Camden Park much easier. The recommended route for Ohio picnickers is to take Route 52 to the new Huntington bridge, turn west (right) on Route 60 and proceed to Camden Park.

Schedule of the day's activities:
10:30 a.m. — Park Opens
12:00 - 2:30 p.m. — Safety Department Match The Picture Contest
12:00 - 5:00 p.m. — Free Amusement Rides
12:00 — Putting Contest
12:30 — Horseshoe Pitching Contest
1:00 - 2:15 — Adult Games
2:30 - 4:00 — Bingo (adults only)
4:00 — Grand Drawing

The problem of overcrowded conditions improved considerably in 1968 when the picnic committee recommended steps be taken to control unauthorized park entry. The 1969 picnic committee will take these same precautions. As in the past, the picnic committee has established the rule that only GAT employees, their families, and house guests are eligible to attend the picnic. This rule will be closely observed again this year. One picnic ticket per family will be issued. The back of the ticket should be filled out before entering the park. Members of the identification and admission committee will attend picnic entrances and all employees will be required to register their house guests.

The admission tickets will also serve as grand drawing tickets. Once inside the main entrance, the tickets should be deposited in the grand drawing container. To be eligible for the grand drawing prizes, an employe must be present or must have worked on July 12. Employees working on the day of the picnic and whose family will be unable to attend should turn in their grand drawing tickets to the Shift Superintendent's office no later than 3:00 p.m. July 10.

Action will get underway at 12:00 noon when the free amusement rides begin. Intraleague golf putting competitors will tee off at 12:00 noon with prizes being awarded to individuals and their league.

For the first time in several years a horseshoe pitching contest will be held. Contestants should register for horseshoe pitching at the main entrance. Horseshoe pitching competition will begin at 12:30 p.m.

The safety department has a "match the picture contest" planned. Thirty prizes will be awarded during the day to contestants lucky enough to match the pictures.

At 1:00 p.m. the popular adult games will get underway. Highlights of the adult games is the ever popular water balloon toss. The games will again be held in the open field behind the cafeteria.

Bingo calling will begin in the large pavillion adjacent to the cafeteria at 2:30 p.m. Twenty attractive prizes will be awarded to those lucky enough to cover the proper squares.

The grand finale for the day will be the grand drawing which will be held at 4:00 p.m. immediately following Bingo.

Any special problems occurring during the day will be handled by members of the picnic committee. The committee extends a cordial welcome to each employe and his family and hopes each will have a most enjoyable picnic.

SEE YOU JULY 12.



AROUND CAMDEN PARK you will see employees devoting their day to help make your picnic a pleasant one. They are members of the 1969 Picnic Committee: **General Co-Chairmen — Bob Holland (D-553) and Gordon Johnson (D-224); Grand Drawing — Bob Rutherford (D-801) and Paul Cravens (D-731); Tickets — Maurice Trowbridge (D-375); Identification and Admission — Marian Shawkey (D-101), Joe Parker (D-711), Donna**

Penn (D-761), Clair Langebrake (D-533), Dale Massie (D-732), Safety — Les Oylar (D-228), First Aid — Helen Lewis (D-211) and Dr. Harold Lehman (D-210); Photographer — Frank Gorman (D-761); Bingo — Joe Rhea (D-112), D. J. Blanton (D-224), Frank Wood (D-761), Del Prickett (D-224), Lou Donini (D-732), and Jim Hamilton (D-224); Adult Games — Jack Crawford (D-858), John Murrell (D-510), Jack Webb (D-762), Bob Shepherd (D-761).

IN MEMORIAM

Mr. Michael Rediger passed away May 29 at his home in Waverly. He is survived by his wife, Leila. Mike was employed in electronic instrument engineering (D-535) since joining GAT in November of 1966.

In Sympathy

Mrs. Kathryn E. Settle died June 11 in Pike County Hospital. She was the wife of Richard L. Settle, D-341.

Company Dance Set For July 26

The Spring Fantasy dance co-sponsored by GAT and Portsmouth Women's Club has been moved to Saturday, July 26. Dancing will be from 9:00 p.m. til 1:00 a.m. with the music furnished by the Modern Times Sextet. The tickets at \$3.00 per couple may be obtained from the Recreation department or from members of the Portsmouth Women's Club.

Proceeds from the dance will be used to support the needs of the Happy Hearts School.

Picnic Prizes

GRAND DRAWING

Air Conditioner, Portable Television, Luggage (3 pieces) Blender, Watches (Men's and Women's), Silver Service, Electric Frypan, Drill Kit, Electric Razor, Jig Saw, Portable Radio, Cookware.

BINGO

Insulated Coolers, Shoe Polish Kits, Billfolds, Thermo Cups, Portable Mixers, Hot-Cold Servers, Travel Kits, Toaster, Wallets, Coffee Percolators, Steak Knife Set, Electric Shavers, Bread Warmers.

Return Requested

Goodyear Atomic Corporation
 P. O. Box 628
 Piketon, Ohio 45661

CLASSIFIEDS

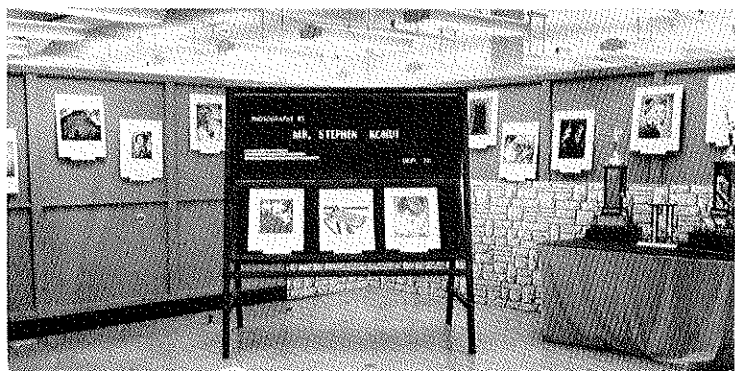
Car pool wanted. Day shift. Chillicothe to plantsite. Please call 774-3403.

FOR SALE Fully furnished 20 gallon aquarium. Pump, filter, air stone, tubing, fish, plants, lights, heater, fish nets, and more. Phone Waverly 947-4056.

FOR SALE 1966 SUZUKI X-6Hustler, 250 cc, mechanically perfect; new seals, chain and wiring; good rubber. Best offer over \$350. Phone Waverly 947-2954.

FOR SALE Set of men's golf woods (1, 3, & 4). Excellent condition; new grips; \$20. Chillicothe 774-3596

WANTED Small dog for a house pet (anything but a bulldog). Phone McDermott 259-4187.



AN EXHIBIT AREA on the second floor X-100 building has been remodeled and set aside to display items of interest to GAT employes. Currently being featured are the prize winning photos of talented amateur photographer Steve Kohut, D-761.

In the future other interesting hobbies will be displayed. Employees interested in featuring hobbies may obtain further information by contacting Training.

PIKETON, OHIO
BULK RATE
 U. S. Postage
PAID
 Permit No. 11