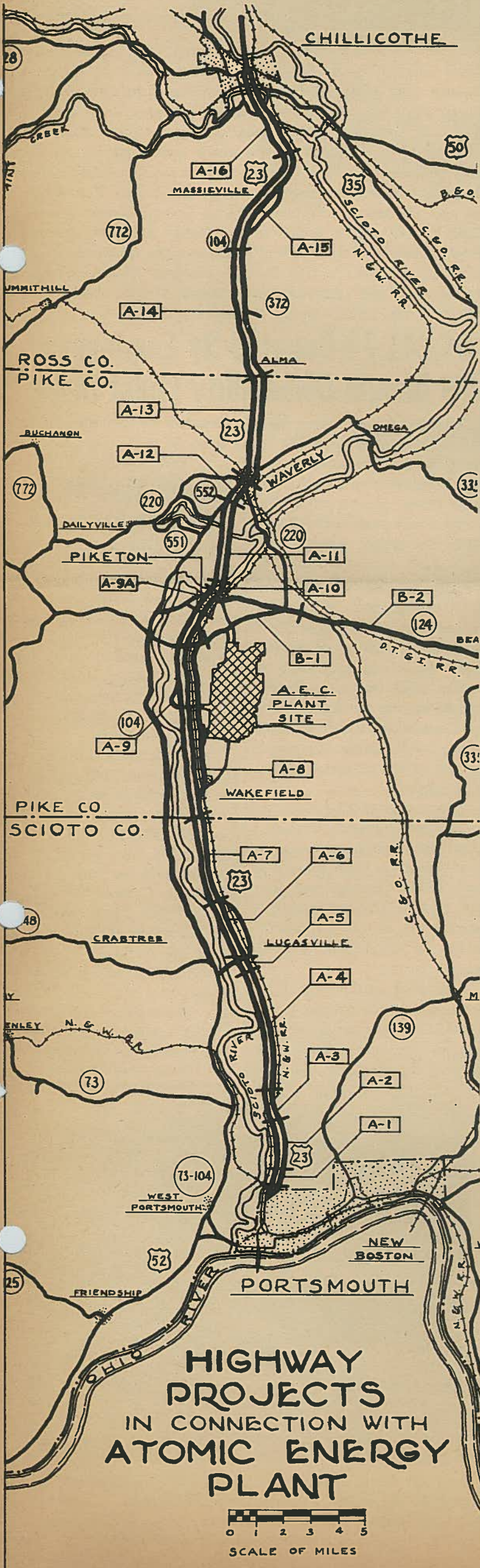




The ATOMIZER

BE SECURITY CONSCIOUS

CONSTRUCTION OF U. S. ROUTE 23 AHEAD OF SCHEDULE



DUAL HIGHWAY TO BE FINEST OF ITS KIND

Construction work on the multi-million dollar U. S. Route No. 23 dual highway between Portsmouth and Chillicothe is progressing ahead of schedule, it was announced by Joseph N. Doyle, division engineer of District Nine of the State Highway Department in Chillicothe.

Route No. 23, named the Scioto Trail, is being relocated and constructed into a modern four-lane expressway to handle the thousands of vehicles now travelling the crowded two-lane route as a result of the building of the Portsmouth Area Atomic Energy Commission plant in Pike County.

Tremendous effort is being exerted by the Ohio State Highway Department, contracting companies, and the Atomic Energy Commission to speed up construction of the new roadway which, when completed, will be one of the finest of its kind in the country.

Doyle said sections of the road, like the by-pass through Piketon and a three-mile stretch near Portsmouth, have been opened for traffic and others would be utilized as soon as they are completed.

"Upon the completion of three bridges between the plant site and Piketon, that section will also be opened to traffic," said Doyle. (See picture page 2).

In an effort to speed up the opening of this section officials of the Atomic Energy Commission at the Portsmouth Area project have assisted the highway department in expediting steel needed for the bridge work.

Doyle also announced plans are under way to build a temporary grade crossing over the Norfolk and Western Railway tracks at the main entrance to the project which will connect with the two east lanes of the new highway, thus enabling traffic to move from the main gate over the new concrete section between the plant and Wakefield.

This move has been instituted to alleviate some of the congestion occurring at the Wakefield underpass.

The construction progress that has been made during the summer and early fall can be accredited to the fine work of the State Highway Department and the contracting companies with the assistance of the excel-

(Continued on page 4)



KEITH C. WASSON

Operations Chief Moves To Kiewit Turnpike Project

Peter Kiewit Sons' Co. General Manager George C. Holling announced several important PKS organizational changes on the Portsmouth Area AEC project in a bulletin issued last week.

R. L. Senior, of New York City has replaced Keith C. Wasson as manager of the Operations Unit. Wasson, who has served in that capacity since the beginning of the Pike County A-plant, will transfer to the Ohio Turnpike project recently begun by PKS.

Senior has been general superintendent of the PKS Construction Department since coming on the Portsmouth job from Pittsburgh where PKS constructed a Veteran's Administration hospital.

In other changes C. G. Metcalfe was assigned as division superintendent of the Process Construction Division and R. C. Ellington came to the Portsmouth Area as assistant to the General Manager from the Norfolk, Virginia base of North Atlantic Constructors.

PUBLIC SALE OF FIREWOOD IS ANNOUNCED

The Peter Kiewit Sons' Co. has announced that firewood, accumulated on the project, will go on sale to the public tomorrow. The wood will be located at the project salvage yard and may be obtained Monday through Saturday from 8:00 A. M. until 4:30 P. M.

Persons are instructed to use the south access road or truck entrance to the scrap yard which is located south of the perimeter road beyond the Goodyear Training Building.

Purchasers will be directed by guards to the salvage area where the wood will be loaded and the same route followed on returning to the highway. A PKS storekeeper will be on duty throughout the day to handle transactions. All buyers will be under the supervision of project personnel while at the yard.

Pick-ups or two-wheel auto trailers will be charged \$1.00 per load. Stake body or platform trucks, up to and including 16-foot lengths, will pay \$3.00 a load. Cash or certified check, made payable to Peter Kiewit Sons' Co., will be required for all purchases and buyers will be required to load their own trucks or trailers.

Buyers are reminded that Peter Kiewit Sons' Co. and the U. S. Government will not be liable for any damages or accidents to persons or property while individuals are engaged in the removal of scrap.

SEE IT HERE
HEAR IT HERE
LEAVE IT HERE

Legend Of U. S. Route 23 Construction

| Project No. | Route No. | County | Contractor | Length | Cost | Completion Date |
|-------------|-----------|--------|-----------------------------|--------|---------------|-----------------|
| A-1 | U. S. 23 | Scioto | Will be let Dec. or Jan. | | | |
| A-2 | U. S. 23 | Scioto | Ohio Asphalt Paving Corp. | 1.479 | \$ 400,749.94 | 6-30-54 |
| A-3 | U. S. 23 | Scioto | The Baker & Hickey Co. | 1.290 | 1,336,960.00 | 10-31-54 |
| A-4 | U. S. 23 | Scioto | Red Eagle Corporation | 4.189 | 2,429,056.00 | 6-30-54 |
| A-5 | U. S. 23 | Scioto | Will be let Dec. or Jan. | | | |
| A-6 | U. S. 23 | Scioto | W. L. Harper Co. | 1.998 | 724,193.84 | 8-31-54 |
| A-7 | U. S. 23 | Scioto | John R. Jurgensen | 3.218 | 731,630.64 | 8-31-54 |
| A-8 | U. S. 23 | Pike | W. L. Johnson Cons. Co. | 7.848 | 2,304,196.21 | 6-30-54 |
| A-9 | U. S. 23 | Pike | The W. J. Seidensticker Co. | 1.228 | 611,360.20 | 9-30-54 |
| A-9-A | U. S. 23 | Pike | Red Eagle Corporation | 1.378 | 437,244.65 | 11-30-53 |
| A-10 | U. S. 23 | Pike | The Baker & Hickey Co. | 0.140 | 548,769.48 | 12-31-53 |
| A-11 | U. S. 23 | Pike | The W. J. Harper Co. | 2.867 | 1,084,136.44 | 9-30-54 |
| A-12 | U. S. 23 | Pike | The W. J. Seidensticker Co. | 1.122 | 454,718.67 | 12-31-53 |
| A-13 | U. S. 23 | Pike | Will be let Dec. or Jan. | | | |
| A-14 | U. S. 23 | Ross | Will be let early in 1954 | | | |
| A-15 | U. S. 23 | Ross | Will be let early in 1954 | | | |
| A-16 | U. S. 23 | Ross | Visintine and Company | 3.604 | 2,140,000.00 | 11-30-54 |
| B-1 | S. R. 124 | Pike | V. N. Holderman & Sons, I. | 1.490 | 483,803.43 | 6-30-54 |
| B-2 | S. R. 124 | Pike | W. H. Ringwald & Sons, C. | 4.156 | 679,450.00 | 6-30-54 |



Published fortnightly by Peter Kiewit Sons' Co., its subcontractors and affiliated companies for all employees and their dependents on the Portsmouth Area U. S. Atomic Energy Commission project. "THE ATOMIZER" is edited and printed as a function of the PKS Recreation Division, Luther F. Poling, chief.

Editor Stan Spaulding
 Photographers D. J. Landstrom
 Glenn Dearing

EMPHASIS ON SAFETY

By now you are no doubt well aware of the strong emphasis we place on safety. You heard of our accident prevention program during your orientation at the time you were hired. You attend weekly safety meetings and see posters, bulletins, and safety signs wherever you go on the project.

This extensive campaign is based on a fundamental policy of the project. That policy reads, in part, as follows: "The safety and well-being of all employees on this project are to receive first consideration throughout any and all phases of the work."

It is our purpose and our desire to operate with as few accidents as is humanly possible recognizing that no organization can take pride in any accomplishment that involves needless loss of life or human suffering.

So far you have done an excellent job in keeping the accident rate low, but there have, nevertheless, been unnecessary mishaps. We hope that your alert attention when in potentially hazardous situations plus an ever-growing safety consciousness will make our future record even better than it has been in the past. To do that, each of us must assume full responsibility for our own safety and the safety of others. **THINK! SAFETY PAYS YOU!**

George C. Holling, General Manager
 Peter Kiewit Sons' Co.
 Portsmouth Area AEC Project.

NAF Chapter To Hold Initial Meeting Monday

A group of 250 Portsmouth Area employees are expected to attend the initial meeting of the National Association of Foremen's chapter in the project cafeteria on Monday, November 9 at 6:00 P. M.

Senior Area Director Raymond Monsalvatge of the NAF, who attended the organizational meeting held on the project last month, will be the guest speaker. Dinner will be served in the cafeteria before the meeting.

Nominations for permanent officers will be made at Monday's meeting with tentative plans calling for the election to be held at the December meeting. At present the chapter will meet once each month. Al Hull of PKS has been serving in the capacity of temporary chairman and Al Smith of Reynolds-Newbery has been the acting secretary.



FIRE PREVENTION
 by
LT. ROBERT MCNISH

The management of the contracting companies have complied with all requirements of the law in respect to fire protection. They have gone beyond these requirements in adopting additional precautions for your safety in case of fire or other emergency. Special fire prevention, fire fighting brigades, and emergency exit organizations have been set up to safeguard you.

Detailed instructions outlining your part in the evacuation of buildings will be given you. Learn these instructions so you know what to do in an emergency. If your work requires you to be in other departments, know the exit rules that apply there and follow them unless you have emergency duties elsewhere.

IN CASE OF FIRE OR OTHER EMERGENCY

1. Keep your head—avoid panic and confusion.
2. Know the location of exits—be sure you know the safest way out of the building no matter where you are.
3. Know the location of nearby fire extinguishers—learn the proper way to use all types of extinguishers.
4. Know how to report a fire or other emergency — send in the alarm without delay; notify the Chief of Exit Drills.
5. Follow exit instructions — complete all emergency duties assigned to you and be ready to march out rapidly according to plan.
6. Walk to your assigned exit—maintain order and quiet; take each drill seriously—it may be "the real thing".
7. Be fire conscious—observe all "no Smoking" rules.



Pictured above are officials that assisted with the Community Chest drive held on the project and members of the Scioto County Community Chest staff, watching Employee Relations Department Director E. R. Meggs handing over a check for \$4,841.74 collected from manual and non-manual Portsmouth Area employees. Receiving the check on behalf of the Community Chest is Bill Konya, a member of the Community Chest's board of trustees and representative of the Atomic Trades Council and Portsmouth Building Trades Council. Looking on are Carlton Bell (left), senior administrative assistant; James B. Pugh, member of the board of trustees of the Community Chest and vice-president of the Security Central National Bank of Portsmouth; and (extreme right) Walter Grubb, executive secretary of the Scioto County Community Chest.

\$4,841.74 Donated By Employees To Annual Community Chest Drive

Figures released last week showed a total of \$4,841.74 donated by Portsmouth Area project employees to the Community Chest during the Red Feather drive that was conducted on the project from October 12 to 22.

Employee Relations Director E. R. Meggs, who handled arrangements for the project drive with the assistance of Carlton Bell, senior administrative assistant, said the money was turned over to the Scioto County Community Chest which is acting as the receiving agency for all of the participating organizations.

The money will be disbursed by the latter agency through a board of trustees composed of representatives from Pike, Ross and Scioto Counties and from the Atomic Trades Council, in accordance with designations made by employees on their pledge cards.

The drive on the project was conducted by the Atomic Trades Council for the manual employees and by unit captains, appointed by resident and unit

managers, for non-manual personnel.

Project Tops All ORO Installations In Vehicle Safety

Figures released last week by the AEC Oak Ridge Operations office showed the Portsmouth Area project holding the lead over all other ORO installations with a low motor vehicle accident frequency mark of .51 in the operation of vehicles by construction companies.

The PKS Safety Department announced that 106 days without a chargeable motor vehicle accident were completed on October 30. This covered a total of 2,962,785 miles driven by all types of vehicles from January 1 through October 30 on the project. This figure would be the equivalent of 114 times around the world.

During the period between January and October the loss to both government and private vehicles totaled only \$3,463 in all accidents on the project.



One of the six Grinnell Corporation area superintendents will have the unenviable award of this safety placard which will be carried in the back of the superintendent's pick-up until taken away by another superintendent with a poorer safety record. The award will be made on the basis of the superintendent having the highest "Severity Control" mark over the period of one month. The figure is based on the number of man-hours worked against the number of first aid cases. Pictured with the sign voted, "The most undesirable to have in the back of my pick-up" by the six superintendents are Grinnell Safety Department employees Art Thomas (left) and Bill Shelleda.

Thanksgiving Day Dance Set At Elks

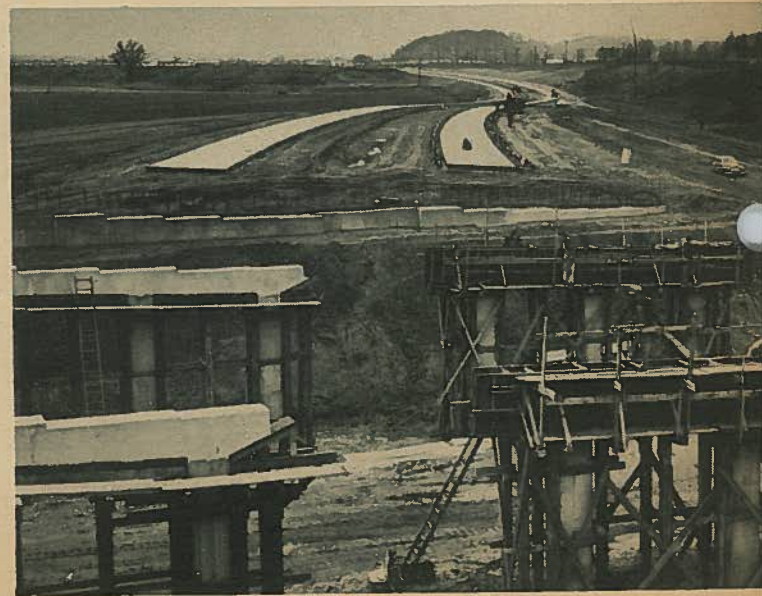
A Thanksgiving Day "By Jupiter" dance will be held at the Elks Club ballroom in Portsmouth on Thursday night, November 26, from 9:00 until 12:00 midnight, it has been announced by PKS Recreation Division Chief Luther F. Poling.

The dance will be open to all Portsmouth Area employees and their guests and admission will be by "By Jupiter" card or arrangement with the Recreation Division. Dancing will be to the music of Wally Head and his orchestra. The Elks Club is located at 317 Court Street in Portsmouth.

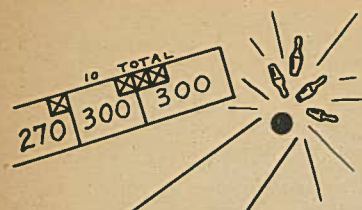
EXTRA BUS TO JOBSITE

Due to over-crowded conditions the Greyhound Bus Company has announced the addition of a second bus on the daily run between Portsmouth and the jobsite. The additional bus, added last Monday, will be on a two week trial basis.

Buses leave the Greyhound terminal in Portsmouth daily at 6:45 A. M. and will pick up passengers en route along the Scioto Trail. The return trip leaves from the front of the Administration Building at 5:45 P. M.



Ready for travel upon completion of three bridges like the one shown above is this section of Route 23 just south of Piketor Highway officials stated this section would be opened as soon as steel erection work on this project could be completed. (See Highway story on page 1).



BOWLING

| JACKSON MEN'S LEAGUE | | | |
|----------------------|-----|-----|-----|
| TEAM | W | L | Pts |
| P-N | 15 | 3 | 21 |
| Architects | 11 | 7 | 15 |
| PKS 1 | 10 | 8 | 15 |
| Engineers | 10½ | 7½ | 14½ |
| PKS 2 | 10 | 8 | 14 |
| Grinnell | 10 | 8 | 13 |
| R-N Est. | 10 | 8 | 13 |
| PKS Eng. | 9 | 9 | 12 |
| Accounting | 6 | 12 | 8 |
| Trailer Court | 7 | 11 | 8 |
| R-N Eng. | 5½ | 12½ | 6½ |
| AEC | 4 | 14 | 4 |

| PORTSMOUTH MEN'S LEAGUE | | | |
|-------------------------|-----|----|------|
| TEAM | W | L | Pts. |
| R-N Field | 13½ | 7½ | 19½ |
| R. F. Brown | 13 | 8 | 18 |
| Timing | 13 | 8 | 18 |
| C. Awards | 12 | 9 | 15 |
| R-N Office | 12 | 9 | 15 |
| Koch Sons 1 | 11 | 10 | 14 |
| Subcontracts | 10 | 8 | 13 |
| Mat. Handling | 9 | 12 | 13 |
| Koch Sons 2 | 8½ | 9½ | 11½ |
| Grinnell | 7 | 14 | 10 |
| R-N Repairs | 7 | 14 | 9 |
| Heavy Equip. | 7 | 14 | 8 |

| CHILLICOTHE MEN'S LEAGUE | | | |
|--------------------------|----|-----|------|
| TEAM | W | L | Pts. |
| Ramb. Wrecks | 16 | 2 | 21 |
| Gophers | 13 | 5 | 18 |
| Riff-Raffs | 12 | 6 | 18 |
| A. M. Kinney | 6 | 12 | 9 |
| Sad Sacks | 7 | 11 | 9 |
| Pick-ups | 6½ | 11½ | 7½ |
| Vagabums | 6½ | 11½ | 7½ |
| Tubers | 5 | 1 | 6 |

| SUNDAY MIXED LEAGUE | | | |
|---------------------|----|----|------|
| TEAM | W | L | Pts. |
| Alley Burners | 22 | 10 | |
| Wood Choppers | 21 | 11 | |
| Hoboes | 19 | 13 | |
| Lucky Strikes | 18 | 14 | |
| Alley Oops | 17 | 15 | |
| Shanty Boat Irish | 17 | 15 | |
| Gutter Rats | 15 | 17 | |
| Big Hams | 14 | 18 | |
| Strike Outs | 13 | 19 | |
| overs | 13 | 19 | |
| Strikes & A Spare | 12 | 20 | |
| Atoms | 11 | 21 | |

| WAVERLY MEN'S LEAGUE | | | |
|----------------------|---|----|------|
| TEAM | W | L | Pts. |
| Dodgers | 9 | 3 | 13 |
| Dawson T. P. | 8 | 4 | 12 |
| Construction | 8 | 4 | 10 |
| Scioto T. Ranch | 7 | 5 | 9 |
| Wakefield T. P. | 6 | 6 | 8 |
| Schmidt's T. P. | 5 | 7 | 7 |
| Nelson's Trailers | 4 | 8 | 4 |
| Fairground T. P. | 1 | 11 | 1 |

ATTENTION AMATEUR BOXERS

The PKS Recreation Division has announced plans to form an amateur boxing club composed of project employees with the possibility of entering the annual Golden Gloves competition this coming spring. Interested persons are asked to contact Carpenter Foreman J. B. Coleman or Jack Feck in the PKS Recreation Division office.

Coleman has issued a call for all amateur fighters to report to the West Side Recreation gym in Portsmouth any night next week from 7:30 to 9:00 P. M. to make plans for training and scheduling several bouts.



Pictured above is some of the action that took place at last Sunday's Turkey and Ham Shoot, sponsored by the Wakefield Gun Club and PKS Recreation Division, at the gun club range near Wakefield. Top photo shows a large part of the crowd watching five participants in a trap shoot event. Lower right-hand photo shows project employees signing up for one of the afternoon's 12 events. In lower right photo Albert Smith (extreme right) watches as Louie Leeper takes the turkey Smith won in a target event from the pen. Others looking on from left to right are: Luther F. Poling, Recreation Division chief, Tom Jones and N. L. Jones, of the Wakefield Gun Club.

Large Crowd Attends Turkey Shoot At Wakefield; Plans Announced For Another Event On November 15

An estimated crowd of some 300 persons were on hand last Sunday afternoon for the first Turkey and Ham Shoot sponsored by the Wakefield Gun Club and the PKS Recreation Division, at the gun club range west of the Wakefield Trailer village.

Nine target and three trap shoot events were held with the winners being awarded either turkeys or hams furnished by the Recreation Division.

Gun club officials and Luther F. Poling, chief of the PKS Recreation Division have announced plans to hold another shoot at the Wakefield range on Sunday afternoon, November 15, starting at one o'clock. All project employees are invited to attend. There will be no entry fee and shells will be sold by the gun club at the range.

Winners of last Sunday's 12 events were: Target Shoots—Albert Smith, J. D. Samson, J. H. Atkinson, H. Gloyd, R. W. Benner, W. H. Bishop, Jackie Flood, F. J. McAnally and Reed Miller. Trap Shoots—Charley Jones, Ora Waitman and Sam Crout.

There were 20 entries in each of the 12 events during the afternoon. Entrants in the three trap shoots fired 25 shells each. Waitman registered the top trap shoot score with 23 hits out of a possible 25. Jones and Crout each scored 21.

FREE ICE SKATING

Project employees have been invited to attend free ice skating at the Huntington, W. Va. Memorial Field House for four days beginning on November 10.

The invitation was made by Field House Director Mike Lewis to PKS Recreation Chief Luther Poling.



Pictured in front of a Stinson "Station Wagon" are several members of the Atomic Flying Club formed by employees of the Portsmouth Area Atomic Energy Commission project. Kneeling left to right are: Al Jackson, Cecil VanHoose and Bill Fox. Standing left to right are: Ray Torres, Bob Williams, William Walter, Stan Spaulding and Charles Matlock. Charter members absent when the picture was taken were: Earl May, Maurice Litteral, George Toto, Roberta Riggs and Ken Cunningham.

FLYING CLUB MEETS SUNDAY AT RAVEN ROCK

Members of the Atomic Flying Club, made up of project employees and their dependents, will meet at the Raven Rock Airport west of Portsmouth on U. S. Route 52 this Sunday afternoon at 2:00 P. M. to elect permanent officers and complete the organization of the club.

The group has been formed with the objective of promoting and perpetuating private flying among Portsmouth Area employees.

All members of the club will have an equal share in property purchased by the group. Tentative plans call for the club to purchase one training plane immediately with another for cross-country flying to be obtained some time in the future.

Any project employee interested in flying, whether a licensed pilot or beginner, is invited to attend Sunday's meeting at the airport, or contact the PKS Recreation Division for additional information. Stan Spaulding has been acting as temporary chairman for the club and Bob Williams as temporary secretary.

CAGE PLANS BEING MADE

Project employees or groups interested in forming basketball teams to participate in leagues sponsored by the PKS Recreation Division during the winter months are asked to contact the Recreation Division not later than Friday November 13.

Individuals or groups are asked to designate the place or area where they would like to have a team.

WOMEN'S GROUP TO MEET

All women dependents of project employees living in the Waverly area are invited to attend a women's club organizational meeting sponsored by the PKS Recreation Division not later than Tuesday, November 10, at 2:30 P. M.



Pictured above is Troop "A" of the PKS Plant Protection Guard Force, commanded by Lt. Thomas E. Slye. Kneeling in front left to right are: Sgt. C. C. Caulley, Sgt. D. C. Rose, Lt. T. E. Slye and Sgt. A. Roach. Second row left to right: R. N. Dodds, C. N. Crawford, C. E. Hankins, A. A. Anderson, A. W. Jackson, O. M. Herrod, G. R. Blosser, G. N. Callahan, B. E. Baker, V. L. Ramsey, R. L. Wilmoth, H. C. Beam and J. L. Bray. Top row left to right: D. N. Finger, C. S. Burke, E. T. Brisker, O. L. Walker, Jr., R. M. Keene, E. M. Hatches, Jr., W. N. Harris, J. M. Morman, O. E. England, R. E. Kaut, C. V. Burnett, G. W. Lane and F. D. Worthington.

CLASSIFIEDS

The following classified ads are free to any Portsmouth Area project employee but must be confined to items on housing, transportation and lost and found.

Phone 171 or 469

FOR RENT—Large room with private bath at 929 Second St., Portsmouth. Contact *Leroy Star*, Ext. 381.

FOR RENT—5 cabins and 3 sleeping rooms for men or women, clean and comfortable, at the Lakeview Court. Contact *Mrs. Overman*, Portsmouth 5-6432.

FOR RENT—Modern sleeping rooms with shower at 400 First Avenue, Waverly. Contact *R. L. Fisher*, Waverly 150-W or Ext. 348.

FOR RENT—New modern six-room house, basement and garage at 2710 Sherman Road, Portsmouth, Ohio. Phone 7-1253

FOR RENT—Rooms for 5 men two miles east of Givens on Route 124. \$9.00 per week. Phone Beaver 4270.

FOR RENT—Six-room house 20 miles west of Piketon on Route 41. Contact *R. Ison*, Ext. 851-R2 or Portsmouth 4-9463.

WANTED—Riders from Iron-ton or en route to jobsite on 7:00 to 4:30 shift. Leave Iron-ton 5:30. Contact *Gary Bishop*, Ext. 937.

WANTED—Four riders from Chillicothe on 7:00 to 4:30 shift. Contact *Don Parker*, Ext. 377.

WANTED—Four riders from Portsmouth or vicinity on 8:00 to 5:30 shift. Contact *William Peacock*, Ext. 47.

WANTED—Riders from Chillicothe to jobsite on 7:30. to 5:00 shift. Contact *Harold Spangler*, Ext. 799 or Chillicothe 25462.

WANTED—Four riders from New Boston through Clarks-town and Minford on 7:30 to 5:00 shift. Contact *Fred Adkins*, Ext. 455.

WANTED—Riders or to form car pool from Pomeroy on 8:00 to 5:30 shift. Contact *William H. Wallace*, Ext. 838-R2.

WANTED—Riders from Portsmouth on 8:00 to 5:30 shift. Contact *Robert Martin*, Portsmouth 6-2989.

WANTED—Two persons with car to form car pool from Waverly to jobsite on 8:00 to 5:30 shift. Contact *F. Walker*, Ext. 197.

WANTED—Two drivers to drive one day a week in 5 man car pool from Portsmouth on 8:00 to 5:30 shift. Prefer men living near 17th and Offnere. Contact *F. S. Coyne*, Ext. 160.

WANTED—Riders from Waverly to jobsite on 8:00 to 5:30 shift. Contact *Martha Johns*, Ext. 520.

FOR SALE—26-foot all metal house trailer, owner will finance. See *Carl Williams*, Piketon Trailer Court, or call Ext. 901.

FOR SALE—27-foot 1947 "Liberty" house trailer—good condition, reasonably priced. Contact *R. Gardner*, Ext. 545.

LOST—Rust colored corduroy jacket, left in north wing waiting room of Personnel Building. Contact *Paul Oberly*, Ext. 480.

LOST—Short, white coat with dark blue plaid design and blue lining. Contact *Doris Conklin*, Ext. 446.

LOST—Horn-rim glasses and brown leather case. Call *J. W. Lock*, Ext. 617.

— THINK SAFETY —

Waverly Heights Official Opening Set For Nov. 14

The new Waverly Heights addition of F. H. A. homes located at the north edge of Waverly just off U. S. Route No. 23, will have its official opening Saturday, November 14.

Although some families are already occupying the new two and three bedroom units, Manager B. A. Haiman said the official opening was being held off until next week when two of the model homes will be furnished and landscaping completed.

The selling price of the units runs from \$10,500 up, with \$1,500 required as a down payment plus closing costs. The houses are available to any employee at the Portsmouth Area AEC project.

Information on the Waverly Heights addition units may be obtained at the PKS Housing and Feeding Division office in the Personnel Building or by stopping at the office at Waverly Heights. The houses may be seen daily until 9:00 P. M.



ANNOUNCEMENTS

Mr. and Mrs. Bill Thornberg are the parents of a baby girl born several weeks ago. The baby was named Eve. Thornberg is employed in Accounts Payable Division.

Mr. and Mrs. John Brust were entertained at a surprise party on Saturday night, October 24, at the Elks Club in Portsmouth. The occasion was the Brusts' 32nd wedding anniversary. Over 20 couples attended the dinner-party which was arranged by Lora Zimmerman. Brust has been with PKS since 1936 and is currently Superintendent of the Building Construction Division on the Portsmouth Area job.

Mr. and Mrs. Luther F. Poling, of Brewer Heights in Chillicothe celebrated their 25th wedding anniversary on October 26. Luther is chief of the PKS Recreation Division.

DUAL HIGHWAY

(Continued from page 1)

lent weather that has prevailed.

Tentative plans call for most of the 45 miles of construction between Portsmouth and Chillicothe to be completed early in 1955.

Shown on page one is a map and legend which designate the contractor, cost and contemplated completion date of all of the projects that are under contract.

All of the completion dates listed in this chart were projected before construction began and will likely be shortened considerably with the speeding up of the job. The dates also are final completion dates when the contracting company is scheduled to turn the sections over to the state. Officials pointed out that use of various sections would be made before this occurred.



Shown operating the complicated machinery necessary for handling the large number of payroll checks for project employees are members of the PKS Tabulating Department. Pictured in top photo are employees operating IBM electric calculators and accounting machines. In lower left picture a bevy of attractive PKS employees are shown operating key punch machines. Lower right photo pictures Fiscal Unit Manager Ron Smathers and Tabulating Department Director Louis Eicholt.

Tabulating Dept. Writes Thousands Of Checks Weekly

After considerable planning at the outset of this huge construction operation, management of the Peter Kiewit Sons' Co. decided to employ a machine method of calculating and preparing payrolls, checks, accounting reports and various personnel statistics that would be required in a job of this size.

As a result of this planning the IBM (International Business Machine) system was employed due to its flexibility and speed of operation. To handle the complicated operation PKS set up a Tabulating Department as a part of the Fiscal Unit.

The machines used in the department are the most modern available and include such operations as the IBM electronic calculator, which adds, divides and multiplies, performing these operations repetitively and in such combinations as required, and then punches the results in a card at a consistent rate of 100 per minute.

Another machine in use by the Tabulating Department is the Type 402 Accounting Machine which is able to list 6,000 cards or printing lines per hour and prints payroll checks at the rate of 3,000 per hour.

Reports prepared by the Tabulating Department, which is under the direction of Louis Eicholt, include weekly payrolls and checks for all PKS and

CPFF employees, employees' yearly earning record; accounting reports, which include costs of material and labor; checks prepared for vendor's invoices and personnel reports as required by management.

Eicholt said the Tabulating Department was currently turning out approximately 8,500 individual checks each week amounting to nearly one million dollars. Another estimated \$13,

000,000 in checks is made up for payment to vendors for supplies each month.

LOST AND FOUND SERVICE

Project employees are reminded that a "Lost and Found" service is being maintained by the PKS Guard Force. Articles may be claimed or turned in the desk sergeant on duty at the Guard Force headquarters in the Personnel Building.

