



The ATOMIZER

BE SECURITY CONSCIOUS



Pictured above are personnel of the PKS Warehousing Department Traffic Division under Superintendent John Sybyst. Shown in the top photo are members of the Freight Distribution and Shipping Branches with Warehousing Director R. A. Stiegler and Sybyst. (Front row ninth and tenth from left). In the center picture Stiegler and Traffic Division supervisory heads are shown with one of the four train crews on the project and employees of the Rail Branch. Lower left, Checker H. Aldridge watches as Ezra Wright (left) and Robert McCann load a fork lift operated by Paul Maddin. Lower right, Traffic Division supervisors pose for photographer Don Landstrom with Warehousing Director Ralph Stiegler (seated center). Others in the picture from left to right are: Fred Warren, chief of the Shipping Branch, Ed Cave, chief of the Freight Distribution Branch, Superintendent John Sybyst, Administrative Assistant A. R. Rankin and Yardmaster E. L. Bowes.

JUST ONE PART OF WAREHOUSING:

HANDLING OF VAST AMOUNTS OF MATERIAL IS RESPONSIBILITY OF PKS TRAFFIC DIVISION

The checking, classification and distribution of all material sent to the Portsmouth Area AEC project by rail or motor freight. This in a few words is the tremendous job order that faces the Traffic Division of the Peter Kiewit Sons' Co. Warehousing Department.

The Traffic Division, operating under the capable supervision of Superintendent John Sybyst, has received a total of 9,779 railroad cars and 8,085 motor freight deliveries, excluding rock trucks, in the last 10 months of construction. During

this time 1,187,217 tons of material including rock have been shipped into the jobsite.

The Traffic Division is composed of three branches: the Freight Distribution Branch under the supervision of E. A. "Ed" Cave, the Rail Branch headed by Yardmaster E. L. Bowes and the Shipping Branch under Chief Dispatcher Fred Warren.

The Rail Branch is responsible for the receiving of all rail freight entering the project on the spur lines of the Norfolk and Western and Chesapeake and Ohio Railroads. Cars are

spotted on inter-change tracks immediately on delivery from where they are classified by and then delivered to warehouse sidings or to various subcontractors for unloading.

At the present time the Traffic Division Rail Branch has four switching locomotives operating over the 17 miles of track built on the project. Each train crew is composed of five men.

The Freight Distribution Branch receives all freight trucks, parcel post, express and (Continued on page four)

LET'S KEEP IT UP:

KIEWIT RECEIVES COMMENDATION FROM NEW COMMISSION CHAIRMAN

The Peter Kiewit Sons' Co., prime contractors on the construction of the multi-million dollar Pike County AEC installation, was commended recently on the conduct and progress at the Portsmouth Area job in a letter from the United States Atomic Energy Commission Chairman Lewis L. Strauss.

Mr. Strauss' letter was sent to President Peter Kiewit of the Peter Kiewit Sons' Co., after a report of an investigation of the Portsmouth Area by a congressional subcommittee headed by Congressman George Bender had been forwarded to the Commission.

Mr. Strauss said, "I commend you and your entire organization for the high quality of work which has led to the issuance of such a report. We are particularly gratified that one of the largest construction projects ever undertaken by the Commission has earned the commendation of your entire staff."

Mr. Kiewit termed Chairman Strauss' letter a recognition of the company's performance on the Commission's Portsmouth project. "I hope this commendation will serve as a challenge to all of us to do everything possible to continue to do our work everywhere in an efficient and economical manner," said Mr. Kiewit.

G & V Politico Says He'll Try Again In 1956



JACK S. JOHNSON

"There are a lot of things in the state of Texas that need changing," says Jack S. Johnson, a mechanical inspector with Giffels and Vallet Inc., on the Portsmouth Area AEC project.

Although this view may not be shared in the same light by many of the residents of the Lone Star state, the 42-year-old Johnson, who was an unsuccessful candidate for lieutenant governor in 1952, believes his reasoning to be very sound.

Johnson, a native of Dallas and a former city commissioner, is married and has a 16-year-old son. The Johnsons are currently residing at the Piketon Trailer Village.

A close descendent of former President Andrew Johnson, the amiable Texan plans to return to his native state to try again in the gubernatorial race in the 1956 general election. Johnson has been employed on the Portsmouth Area project with Giffels and Vallet since September of this year.

"DAY OF INFAMY"

Monday, December 7th, marks the twelfth anniversary of Pearl Harbor Day. The late Franklin D. Roosevelt stated in his message to Congress that December 7th, 1941 was a "Day of Infamy", that would long be remembered by every American.

Every one affiliated with this project should recall that through the development of atomic power the war was brought to a sudden conclusion and victory.

We must all work steadily and diligently to keep this country free and safe to insure that we will never again witness a "Day of Infamy".

G. F. McGrath
Field Recruiting Section

Santa To Visit A-Plant Children In Trailer Villages

Arrangements for Santa Claus to visit children of project employees living in area trailer villages has been announced by Luther F. Poling, chief of the PKS Recreation Division.

Poling said tentative plans call for "Old Saint Nick" to begin his visit on or around December 16 and run through December 23. All of Santa's visits will be in the evenings.

Parents in the various villages will be advised by the Recreation Division as to the time and date well in advance of each visit to enable necessary arrangements to be made. Plans call for Santa to talk with the kiddies and to distribute candy to all.

WATCH FOR ANNOUNCEMENT OF PROJECT CHRISTMAS PARTY ON DECEMBER 21



Published fortnightly by Peter Kiewit Sons' Co., its subcontractors and affiliated companies for all employees and their dependents on the Portsmouth Area U. S. Atomic Energy Commission project. "THE ATOMIZER" is edited and printed as a function of the PKS Recreation Division, Luther F. Poling, chief.

Editor Stan Spaulding
 Photographers D. J. Landstrom
 Glenn Dearing
 Paul Leedy

THE BETTER HALF

Someone once said that the reason men succeed more than women is because the women have no wives.

This points out very graphically the important part the wife plays in the success of her husband, and we would not be fulfilling our obligation in expressing appreciation for the fine spirit of cooperation that is making this project successful if we didn't take off our hats to "The Better Half".

A wife puts up with a good many inconveniences so that her husband can follow his trade, and wives of construction men are called on to make more adjustments than the wives of any other group of craftsman.

Our success on this project belongs to those at home as well as those on the job. It is their willing and cheerful acceptance of occasional difficulties that make it quite possible for us to perform efficiently.

George C. Holling, General Manager
 Peter Kiewit Sons' Co.
 Portsmouth Area AEC Project



In the last issue we discussed protecting property from sabotage. This week we would like to talk about a very similar protection — protecting property from theft.

We have a well-trained and well-equipped Guard Force, but it takes more than guards to protect property. It requires the help and alertness of every employee to protect property by keeping it properly secured. Every employee should also help by promptly reporting any theft to the Plant Protection Division.

A good way to visualize this is to compare it to a bank. If a

bank were to leave its vaults open and its money lying around in the lobby, what good would it do for the police to try and protect it? The same is true if we leave our tools and materials lying out, or fail to lock containers, we cannot expect our guards to protect them for us. This is especially true when you consider the size of the project and the large number of personnel employed.

So, for continued Plant Security, do your part and lock that skid shack, tool box, file cabinet, desk, etc.

Grinnell Safety Stops The Clock



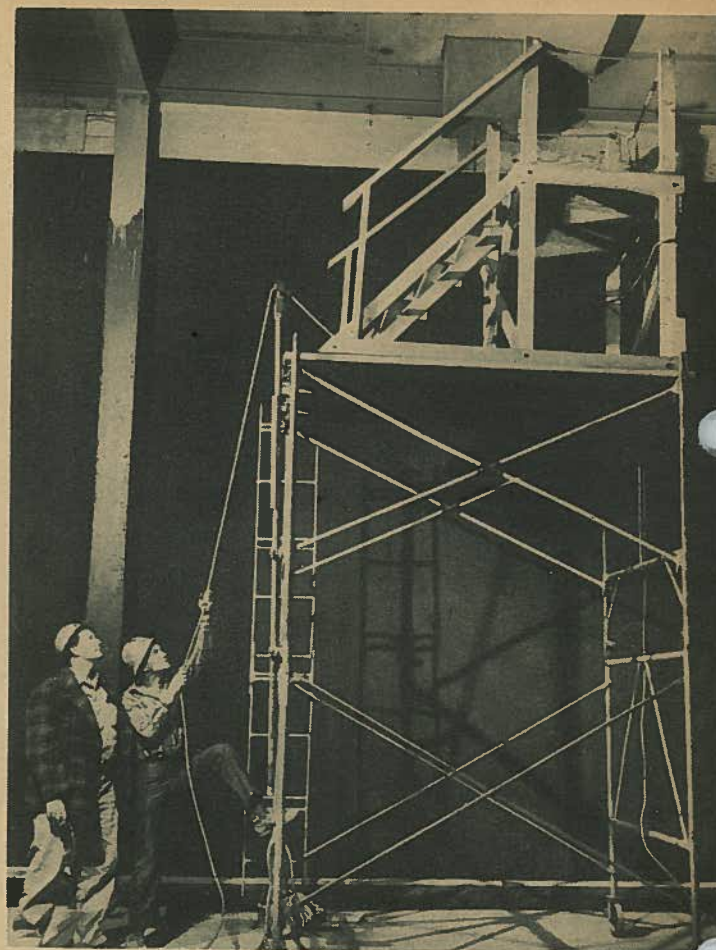
Standing in front of one of the PKS Safety Department clocks, located throughout the area that signify lost time accidents each month, are members of the Grinnell Corporation safety staff. Pictured left to right are: E. S. Carpenter, chief safety engineer of the Providence office, Bill Shelleda, of the Grinnell Portsmouth Area Safety Department and Senior Safety Engineer Art Thomas. Employees of the Grinnell Corporation "stopped" the clock at zero by not having a lost-time accident recorded against their company in one million man-hours of construction work. Grinnell passed the one million mark on November 12. Mr. Carpenter said he was "very pleased at the record being compiled by Grinnell in the building of the Portsmouth Area plant". Grinnell currently has approximately 2,000 employees.

GM Bulletin Warns Against Accepting Gifts

A bulletin issued from the General Manager's office this week reminded all employees that the acceptance of gifts or payment from any subcontractor or vendor is forbidden by Peter Kiewit Sons' Co. and the three CPFF subcontract companies.

Reference is made to the United States Code which states the acceptance of any gift or gratuity of any kind, either directly or indirectly, from any subcontractor or vendor, to any agent of a Cost Plus Fixed Fee Contractor or Subcontractor to be illegal. The code also provides a fine for the acceptance of any such gift or payment.

Employees are cautioned to refrain from accepting any gifts, luncheon engagements, sporting event tickets, Christmas presents or invitations to any form of entertainment at the expense of any actual or prospective vendor or subcontractor.



Shown above watching Jack Hinton, a Grinnell Corporation pipe fitter, preparing to lower one of the folding scaffolds he designed and helped to build, is General Carpenter Foreman L. C. Smith of PKS. Several of the time-saving devices have been erected for use by the Grinnell Corporation in process construction work (See story).

Invention Of Folding Scaffold Saving Operators Time And Money

Another credit chalked up to the never-ending ingenuity of construction personnel is the efficient use being made, during process construction, of a folding scaffold designed by PKS General Carpenter Foreman L. C. Smith.

Seeing the need for a faster and easier way to handle scaffolds used in inside work, Smith designed a folding-type device which enables a regular steel scaffold with a four-foot extension to be moved under low crossbeams and ducts without the usual dismantling.

Smith estimates, and is backed up by many of the construction personnel that have seen his device in operation, that the folding scaffold saves at least five man-hours of labor each time a scaffold is moved. Smith says his invention can be moved in five minutes.

Smith's scaffold is a four-foot wooden platform erected atop a regular steel scaffold that is raised and lowered by the use of a rope and hinges. Several of the time and money-saving devices have been constructed and are in use in process construction work.

Smith, a native of Knoxville, Tennessee, currently residing in Portsmouth, says the scaffold is the only one of its kind that he has ever seen. Smith has been employed by PKS on the Portsmouth Area project since October of 1952.

AEECA PARTY TONIGHT

The Portsmouth Area Atomic Energy Commission Employee's Association will hold a "Smorgasbord" at the Lake White Club tonight beginning at 9:00 P. M. All members of the association and their families are invited. Entertainment and dancing are also on the evening's schedule.



FIRE PREVENTION
 by
LT. ROBERT MCNISH

Have you ever had a bad dream in which a dangerous situation caused your powers of locomotion to come to a standstill? Most of us have. Most people in real life, when faced by a like situation, react about the same way. Failure to act as intelligent individuals in an emergency such as a fire causes many deaths and injuries annually.

One of the most tragic examples of this failure occurred in an industrial plant similar to this one not long ago. A fire, resulting from some unknown cause, was discovered on the second floor of an office building. Women employees on the floor became panic stricken and ignoring the presence of fire extinguishers nearby, rushed to the only stairway exit. In the ensuing pushing and struggling to gain freedom, they only delayed the progress of others.

Had the employees been trained in the proper use of fire extinguishers, properly drilled in emergency evacuation, there would have been no fire of any consequence, and more important, no loss of life.

So, all employees, especially in the Administration Building, Personnel Building and Cafeteria, please familiarize yourself with the present evacuation plan posted within your building. Then, if there is any doubt in your mind concerning this emergency evacuation plan, contact the fire warden in your vicinity. He will be eager to explain this plan to you because it is your life about which he is concerned.

— THINK SAFETY —

Greyhound Service Between Chillicothe And Site Is Resumed

The Greyhound Bus Company has announced the reactivation of its schedule between Chillicothe and the jobsite due to an increased demand from project employees. The new schedule went into effect Monday of this week.

The bus will run from Chillicothe to the jobsite and return Monday through Friday, leaving Chillicothe at 6:45 A. M. from the Greyhound terminal. The return trip will leave from in front of the Administration Building at 5:40 P. M.

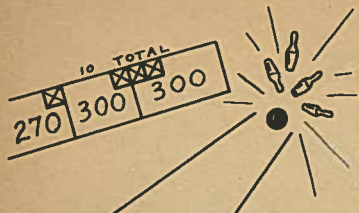
Passengers will be picked up anywhere along the route which will follow Main Street east from the terminal to Mulberry, south on Mulberry to 5th Street, west on 5th to Paint Street, and then south on Paint and U. S. 23 to the jobsite.

If commuter's tickets are purchased the fare will be 57c each way. Non-commuter single and round-trip tickets are priced at 98c and \$1.78 respectively.

PAUL FOWLER-MISS HARRY WED

Mildred Harry and Paul E. Fowler will be married in Portsmouth tonight at 8:00 P. M. at the Methodist Church. The couple plan to leave immediately after the wedding for California where Fowler will assume a new position. Miss Harry has been employed with PKS in the Time Division. Fowler has been supervisor of the PKS Time Division for the past 13 months.

WATCH FOR ANNOUNCEMENT OF PROJECT CHRISTMAS PARTY ON DECEMBER 21



BOWLING

JACKSON MEN'S LEAGUE

TEAM	W	L	Pts.
R-N	22	8	31
KS 1	17	10	24
Architects	17	13	23
R-N Est.	17	13	22
PKS Eng.	16	14	22
PKS 2	16	14	22
Grinnell	15	15	20
Accounting	15	15	20
Engineers	12½	17½	16½
A. E. C.	12	18	14
Trailer Ct.	10	20	12
R-N Eng.	7½	19½	9½

PORTSMOUTH

TEAM	W	L	Pts.
B. F. Brown	23	13	32
R-N Field	21½	14½	29½
Estimating	22	14	30
N Office	21½	14½	27½
Koch Sons 2	18½	17½	24½
Heavy Equip.	18	18	22
Mat. Hand.	15	21	22
C. Awards	16	17	20
Koch Sons 1	15½	29½	19½
Subcontracts	14	19	18
R-N Repair	15	21	20
Dodgers	13	23	19

CHILLICOTHE

MEN'S LEAGUE

TEAM	W	L	Pts.
Gophers	21	9	30
Riff Ruffs	18	12	26
Ramb. Wrecks	20	10	26
Sad Sacks	15	15	21
A. M. Kinney	14	16	19
Pick-ups	11½	18½	13½
Vagabums	11½	18½	13½
Tubers	10	20	12

WAVERLY MEN'S LEAGUE

TEAM	W	L	Pts.
Swift Cleaners	15½	8½	21½
Construction	16½	7½	21½
Schmidt's T. P.	15	9	20
Dawson's T. P.	9	12	14
Scioto T. R.	10	11	12
Wakefield T. P.	9	12	11
Nelson's T. P.	8½	15½	10½
Fairground T. P.	6½	14½	9½

SUNDAY MIXED LEAGUE

TEAM	W	L
Hoboes	33	15
Wood Choppers	32	16
Shanty Boat Irish	27	21
ay Burners	27	21
Lucky Strikes	24	24
Alley Oops	22	26
Rovers	22	26
4 Strikes & A Spare	22	26
Big Hams	21	27
Atoms	21	27
Strike Outs	19	29
Gutter Rats	18	30

WAVERLY

WOMEN'S LEAGUE

TEAM	W	L	Pts.
Riverview	13	5	19
Mobile Homes	12	6	16
Wakefield	10	8	13
Piketon	10	8	13
chell's	9½	8½	12½
Cloverleaf Roll.	7½	10½	11½
All States	9	9	11
Atomic Store	9	9	11
Stewburners	7	11	10½
Cloverleaf Katts	7	11	9
Jolly Spotters	7	11	9
Scioto Ranchers	7	11	8½

MEMORY GEMS

- Be brief—politely
- Be aggressive—tactfully
- Be emphatic—pleasantly
- Be positive—diplomatically
- Be right—graciously

TWO PROJECT CAGE LEAGUES SET TO BEGIN PLAY DEC. 14

Play in two six-team project basketball leagues sponsored by the PKS Recreation Division has been set to begin on Monday, December 14, in Portsmouth.

Two games will be played on Monday, Tuesday and Wednesday nights at the Washington School gym located at 1114-11th Street. All games have been set for 7:30 and 8:30 P. M. Each league will be divided into two rounds with every team playing 10 games.

A playoff between the winners of the American and National Leagues will be held at the end of the season. The type of playoff will be decided later in the campaign.

The Recreation Division has announced practice sessions will be arranged for league teams during the week of December 7.

Plans have also been completed by the Recreation Division to enter a team in the Industrial League in Chillicothe. Employees interested in playing on this team are asked to contact the Recreation Division at Extension 171 as soon as possible.

Recreation Division Announces Holiday Dances Dec. 11-19

Dates for two "Holiday By Jupiter" dances for project employees have been announced by PKS Recreation Division Chief Luther F. Poling.

The first dance will be held in Chillicothe on Friday, December 11, from nine until one at the Elks Club ballroom. The other will be in Jackson at the Memorial Building on Saturday, December 19, from nine until 12.

Playing for both dances will be the "Top Hatters" from Portsmouth. This is a newly formed 10-piece orchestra which includes two vocalists.

Both dances are open to all Portsmouth Area project employees and their guests, and admission will be "By Jupiter" card or arrangement with the PKS Recreation Division.

Final Turkey Shoot Is Set For Wakefield Gun Club On Sunday

The third and possibly last Turkey and Ham Shoot sponsored by the PKS Recreation Division and the Wakefield Gun Club will be held at the Gun Club range west of the Wakefield Trailer Village on Sunday, December 6, starting at 1:00 P. M.

There will be a number of trap and target matches during the afternoon, including a special event for women.

Prizes, given by the Recreation Division, will be awarded to the winner of each match. There is no entry fee and shells will be sold at the range by the Wakefield Club.

Project's 200-Foot Water Storage Tank Is Put In Operation

The project's 200-foot high 250,000 gallon water storage tank, built to handle the domestic water supply for the Portsmouth Area plant, has been put into operation, according to Project Services Department Director O. H. Folsom.

The giant tank was taken over from the contractor, the Chicago Bridge and Iron Co., and was put in complete operation on November 20, after being painted, washed and chlorinated.

Water being used for the project's domestic supply comes from three wells located approximately two miles northwest of the jobsite near the Scioto River. The water is chlorinated at the wells before being pumped to the storage tank. The entire operation is done automatically by pumps at the wells and booster pumps along the line to the tank.

The operation of the domestic water supply is handled entirely by the PKS Building Services Division, and this division must be contacted before closing any of the main water valves in the area.



Jack Feck, assistant chief of the PKS Recreation Division, is shown above presenting the trophy for low-gross score in the Project Golf Tourney sponsored by the Recreation Division to Jim Westervelt. The tourney was an 18-hole handicap event held at the Elks Club course in Portsmouth. Looking on after having received his trophy for low-net score is Jack Schuerman. Westervelt is from Ames, Iowa, and is employed in the Grinnell Corporation Engineering Department. Schuerman, from Lindsay, California, is a senior engineer in the PKS Construction Engineering Department.

Partial Occupancy Of Piketon P.H.A. Project Is Slated For Mid-December

More temporary living space for employees working on the construction of the Pike County AEC project will be provided sometime this month with the partial completion of the Public Housing Project by the Elle and Vitt Construction Company, east of Piketon on State Route 124.

Plans call for the new addition to have 350 rental trailers and 150 three-bedroom prefabricated houses identical to the group erected at the Waverly PHA addition which are already being occupied.

Tentative plans call for 22 houses and 80 trailers to be turned over to the PKS Housing and Feeding Division around the middle of the month. The

trailers will be both four and six sleepers.

Rental cost for the houses has been placed at \$56.75 per month and approximately \$40 and \$50 for the four and six-sleeper trailers respectively. Tenants will pay all utilities in both houses and trailers.

The PHA addition is being constructed on a 55-acre tract located on State Route 124, about two miles from the center of Piketon. Water and sewage facilities will be connected to the Piketon system which extended its limits to include the new development.

Employees desiring information should contact J. C. Nelson, chief of the PKS Housing and Feeding Division.



"SEE WHAT THAT FELLA' IS DOIN'? HE'S GONNA STRAIN HIS BACK JUST AS SURE AS SHOOTIN' SOMEDAY... LIFT WITH YOUR LEGS, NOT YOUR BACK, WHEN YOU'RE LIFTING SOMETHING HEAVY."



WATCH FOR ANNOUNCEMENT OF PROJECT CHRISTMAS PARTY ON DECEMBER 21



Shown above are employees in the PKS Stenographic Pool which was recently moved from the Administration Building to the middle-east wing of the Personnel Building. Upon employment on the project all secretaries, stenographers and typists are assigned to the pool for a short period of training and indoctrination. The pool is under the supervision of Peg Phalen (extreme rear on right) a long-time PKS employee.

CLASSIFIEDS

The following classified ads are free to any Portsmouth Area project employee but must be confined to items on housing, transportation and lost and found.
Phone 171 or 469

WANTED—5 riders from Athens on 7:30 to 5:00 shift. Contact Roscoe Locke, Ext. 647-R2, or 20512 Athens.

WANTED—Riders from Kingston or Chillicothe on 7:30 to 5:00 shift. Contact Herbert Wetzel, Ext. 626-R2.

WANTED—Riders from New Boston through Portsmouth, or en route on 7:00 to 4:30 shift. Contact Gene Ratcliff, Ext. 205.

WANTED — Ride from 1203 Second Street, Portsmouth on 7:30 to 5:00 shift. Call C. G. Watkins, Ext. 153.

WANTED—Ride for three girls from Wheelersburg to jobsite on 8:00 to 5:30 shift. Call Hazel McGraw, Ext. 623.

FOR RENT — Apartment in Jackson, one bedroom, living room, kitchen and bath. Contact Mr. Nichols, Ext. 579.

FOR SALE—Modern 7-room home with 2 complete baths and hardwood floors. Can be converted into two apartments. Call William Greer, Ext. 23, or see at 1113 18th Street after 6:00 P. M.

FOR SALE — 1949 Liberty house trailer, modern, winterized, including 75 cu. ft. storage shed. Set at Picketon Trailer Court. Call Jim Stephenson, Ext. 433.

FOR SALE—2 bedroom bungalow, large living room with wall to wall carpet, fireplace, gas furnace, hardwood floors, modern kitchen with dinner space. Priced for quick sale and possession. Call Ray Dunnington, Ext. 520 or Jackson 646Y.

LOST—Yellow gold, Bulova wrist watch. Lost between Adm. and Personnel Bldg. November 18. Call Daisy Neal, Ext. 303.

FOR RENT—Four room house with no modern conveniences, located one mile and a half west of Waverly on State Route 220. Contact Margaret Parks, Ext. 821, or see evenings or on week-ends.

FOR SALE—27½ foot Glider house trailer, modern with bath. Owner may finance. Call Ken Tuhus, Ext. 86.

WANTED — Ride or Riders from Latham on 8:00 to 5:30 shift. Call Diana Mustard, Ext. 171.

WANTED—Ride from South Webster to jobsite on 8:00 to 5:30 shift. Contact Audrey Beesler, Ext. 386.

FOR SALE — Four bedroom Hilltop residence, 2314 Cleveland Ave., Portsmouth. Hardwood floors, venetian blinds, Lennox attic furnace, electric water heater and pine-paneled recreation room. Less than two years old, located on 100-foot lot. May obtain possession shortly after first of year. Shown by appointment only. Contact T. L. Edelen, Ext. 128 or Portsmouth 4-5889.

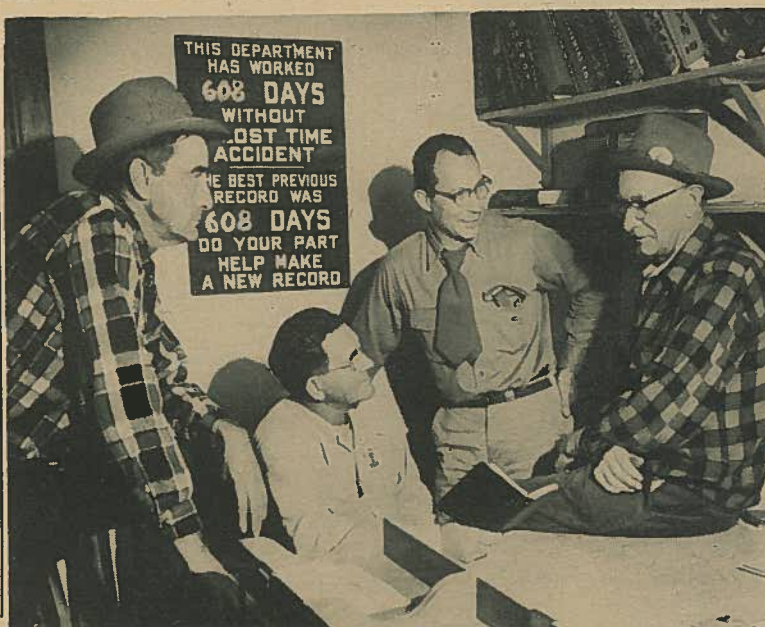
PROCUREMENT DANCE DEC. 5

Employees of the PKS Procurement Department and their guests will hold a "Holiday Dance" at the American Legion hall in Portsmouth tomorrow night from 8:30 until one.

Music will be furnished by Scott's "Syncopaters" from Chillicothe, featuring Jules Scott on the drums. Admission will be \$3.00 a couple.



Pictured above are employees of the Reynolds-Newbery Line Division and supervisory personnel responsible for the distribution of all temporary electric power during the construction stage of the Portsmouth Area AEC plant. In the lower photo Superintendent Harry Hamlin (seated with book), talks over a problem with General Foreman F. Worsham (seated on right). Looking on are General Foreman Tom Fitch (left) and R-N Line Division Engineer D. L. Frederick. Absent when the picture was taken was Superintendent Earl Layman.



R-N LINE DIVISION DISTRIBUTES ELECTRIC POWER COMING FROM OVEC FOR PROJECT CONSTRUCTION

Responsible for the distribution of the vast amount of electricity needed during the construction phase of the Portsmouth Area AEC plant is the Line Division of the Reynolds-Newbery Joint Venture under Superintendent Earl Layman.

The Line Division's job begins at the project's temporary power sub-station where a 138,000-volt high line, supplied by the Ohio Valley Electric Company, enters the project. A second 138,000-volt line will supplement this in the future.

The OVEC is made up of 15 electric companies that will supply the project, upon completion, with the largest single block of power ever to be supplied in this country.

From this point the R-N Line Division handles both primary and secondary wiring throughout the area. At the sub-station two 20,000 KVA transformers step the high-line voltage entering the project down from 138,000 to 13,000 volts before it

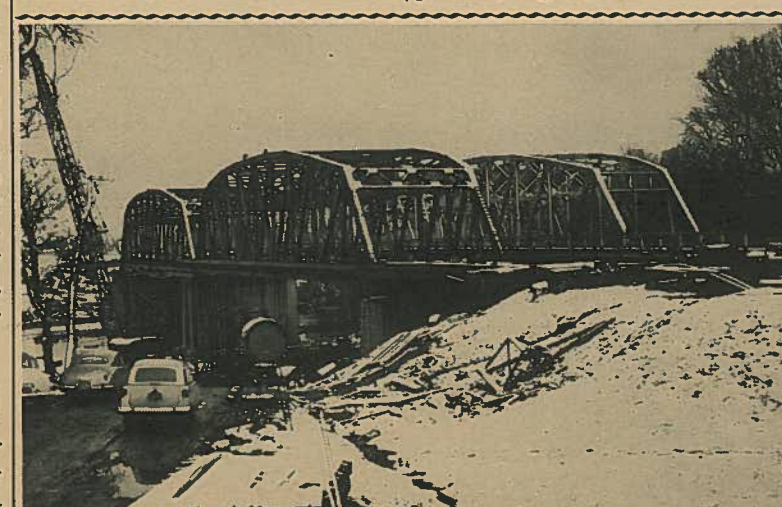
is sent on to approximately 20 prefabricated sub-stations in the area which in turn reduce the voltage to 240/480 for use in construction operation.

A total of 250,000 feet of high line or primary wire has been erected by the Line Division since the project began. The division has also set over 1,200 poles which would be equivalent to a city the size of Portsmouth.

The secondary distribution of the division, which runs from the portable sub-stations to all buildings on the jobsite, will total an amazing 35 miles of wire.

Line Division Engineer Dale Frederick said the division has in operation enough construction flood lights in the area to illuminate 20 miles of highway or two major league ball parks.

In addition to handling all of the temporary distribution of electricity for the project and the setting of poles, the Line Division also erects poles for telephones, lights, the fire alarm



Rapidly proceeding is the erection of steel for bridges, like the one pictured above at Picketon, in the construction of U. S. Route 23 between Portsmouth and Waverly. Ohio State Highway Department officials said several more sections of the new dual roadway would be opened to traffic upon the completion of several bridges. In an effort to ease crowded highway conditions the department plans to use every possible section of highway as soon as enough construction is completed to permit safe travel.

ANNOUNCEMENTS

Mr. and Mrs. William C. White announce the birth of a six-pound 11-ounce daughter named Alice Louise on November 25. White is a guard with Troop B.

Mr. and Mrs. Otis L. Armstrong of Chillicothe announce the birth of a seven-pound three-ounce son named Gary Brent on November 29, at Grant Hospital in Columbus. Armstrong is employed with the Grinnell Corporation as assistant chief in the Employment Division.

TRAFFIC DIVISION

(Continued from page one) petty cash deliveries to the jobsite.

Trucks are routed by the Guard Force to the Traffic Division's Port of Entry at Warehouse One where they are logged by a clerk dispatcher and sent to their destination. Straight truck loads for PKS are routed directly to the warehouse concerned.

Mixed loads are directed to Central Receiving where materials are received on a package count and tally before being forwarded to the warehouse that handles that specific type of material. Express, parcel post and petty cash purchases are handled through the Mail Room Section of the Freight Distribution Branch.

The third phase of handling materials by the Traffic Division is the returning of any material from the jobsite which is conducted by the Shipping Branch. This Branch also keeps records and has custody of all returnable containers that can be returned to vendors for credit.

SAFETY IS FREE USE IT GENEROUSLY