



The ATOMIZER

BE SECURITY CONSCIOUS

VOLUME II

PORTSMOUTH AREA AEC PROJECT

JULY 9, 1954

NUMBER 14

MEET THE MANAGEMENT:

Kiewit Deputy General Manager No Stranger To Construction Field

As deputy general manager of Peter Kiewit Sons' Co. on the Portsmouth Area project, Howard P. Gerlach is specifically responsible for the overall activities of the Engineering and Procurement Unit, the Planning, Scheduling and Control Department and the Operations Unit. Supplementing this sizable job, he coordinates the functions of the three principal subcontractors which are integrated with those of PKS.



HOWARD P. GERLACH

Born in Milwaukee, Wisconsin, Gerlach received his education there, including a C. S. degree in civil engineering from Marquette University in 1926. Following a long and varied engineering experience with several companies in the Milwaukee and Chicago areas, in 1943 he became associated with the firm of John W. Harris Associates, Inc., of New York City as general superintendent. He was vice president of that company when he left in 1951.

Among the many structures bearing the marks of Gerlach's engineering skill are the Statler Hotel in Washington, D. C., Greyhound bus terminals and maintenance buildings in Chicago, Detroit, Cleveland and New York, and the Creole Petroleum housing project and main office building in Caracas, Venezuela.

In March, 1951, he joined the organization of North Atlantic Constructors as chief engineer in the New York office, becoming stateside manager in March of 1952. As many of our readers know, this company is a joint venture which was sponsored by Peter Kiewit Sons' Co. for construction of the now-familiar "Blue Jay" project on the Arctic wastes of Greenland. After two years with North Atlantic, during which the major construction job was accomplished, Gerlach was transferred to the Portsmouth AEC project in April, 1953.

Besides being an avid reader, Howard is a golf enthusiast who finds only too little leisure time for this hobby. He resides in Chillicothe and is a member of the country club in that city.

His other associations include membership in the Western Society of Engineers, Chicago, Illinois, and the American Society of Civil Engineers in New York.

The Atomizer Marks Its First Anniversary With Current Edition

Open Letter From The Editor: With this edition THE ATOMIZER marks its first anniversary as the official publication of Peter Kiewit Sons' Co. on its Portsmouth AEC project.

THE ATOMIZER is published by PKS for all construction personnel connected with the building of this multi-million dollar AEC installation.

Each of the 24 editions that have appeared to date has been the result of a combined effort and has been made possible only through cooperation of this type. Although THE ATOMIZER is printed as a function of the PKS Recreation Division many personnel have taken an active part in its publication.

A special word of thanks is due the following personnel for their part in the publishing of THE ATOMIZER: to the PKS Photographic Section and Chief Photographer Don Landstrom for the excellent work done by them; to E. R. Meggs, director of the PKS Employee Relations Department; to the PKS Safety Department and Plant Protection Division and the many other project employees who have given valuable assistance in many ways.

In a four-page tabloid publication the size and make up of THE ATOMIZER, many items suggested by employees must be omitted or presented in a condensed form. Time and available space go far in governing the amount of material that can be carried.

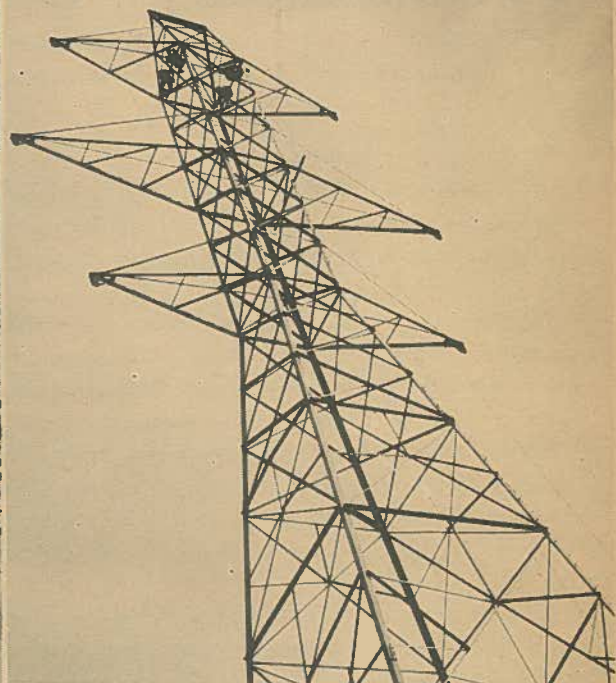
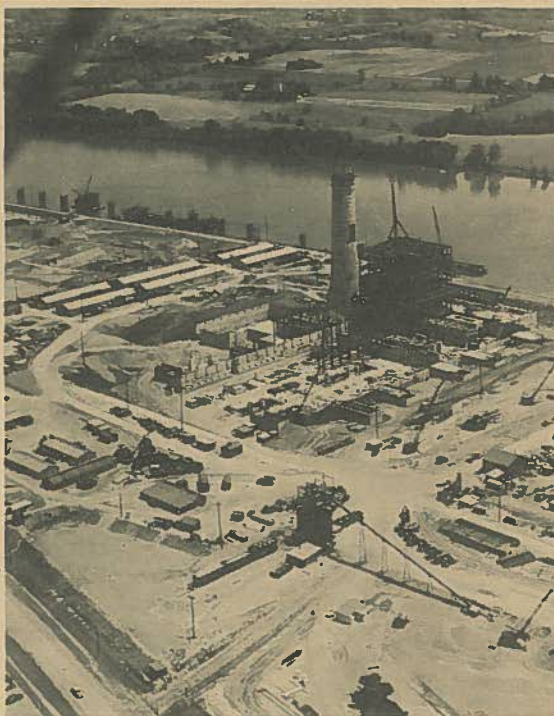
THE ATOMIZER office, however, urges all personnel to submit any material they feel would be newsworthy and interesting, along with any comment for the betterment of the paper.

It is the sincere wish of the editor to make our project newspaper even better and more informative reading during its second year of publication. This can be accomplished only through the combined effort and cooperation of all employees.

Stan Spaulding, Editor

EMPLOYEE DANCE JULY 10

Project employees and their guests in the Chillicothe area are invited to attend an Employee Dance sponsored by the PKS Recreation Division at the Chillicothe Elks Club on Saturday evening, July 10. Dancing from nine until one will be to the music of Joe Chapman and his orchestra. Admission will be by employee identification badge only.



THE aerial photograph shown above shows the progress being made on the construction of the Kyger Creek plant of the Ohio Valley Electric Corporation. This plant, along with a similar one being built at Clifty Creek near Madison, Indiana, will supply the power required for the operation of the Portsmouth Area AEC plant. The Kyger Creek plant is being constructed on the Ohio River near Gallipolis. (See story). The above picture was provided THE ATOMIZER by Frank Mape, State Editor of the Columbus Dispatch. Shown at right is one of the large OVEC transmission towers that will carry 330,000 volt lines to the Portsmouth Area project from both power plants.

COMBINATION OF 15 PRIVATE COMPANIES:

Tremendous Block Of Electric Power For Operation Of Portsmouth AEC Plant Will Be Supplied By OVEC

"The largest single block of electric power ever supplied in this country." This is the task that is being undertaken by 15 private electric power companies making up the Ohio Valley Electric Corporation. This company will furnish the power necessary for the operation of the Atomic Energy Commission's Portsmouth Area project.

OVEC, and its subsidiary the Indiana-Kentucky Electric Corporation, is composed of the following private electric concerns: Appalachian Electric Power, The Cincinnati Gas and Electric Company, The Dayton Power and Light Company, Indiana and Michigan Electric Company, Kentucky Utilities Company, Louisville Gas and Electric Company, Monongehela Power Company, Ohio Edison Company, The Ohio Power Company, Pennsylvania Power Company, The Potomac Edison Company, Southern Indiana Gas and Electric, The Toledo Edison Company and the West Penn Power Company.

The power required for the operation of the Portsmouth Area project will come from two large steam-electric plants being constructed by OVEC near Gallipolis, Ohio, and Madison, Indiana. The two plants will have a combined capacity of 2,200,000 kilowatts. Except for size the plants will be similar in structure and operation. The larger of the two units will be the Clifty Creek plant at Madison. The Gallipolis plant will be known as Kyger Creek.

The power required at the Portsmouth Area project will be an expected 1,800,000 kilowatts continuously while the plant is in full operation.

This tremendous block of power will result in an annual consumption of about 15-billion kilowatt hours or almost two-thirds of the electric power used throughout the highly industrialized state of Ohio during the year of 1952.

In the contract between AEC and OVEC, signed in October of 1952, OVEC agreed to sup-

ply the Portsmouth Area with a maximum of 465,000 kilowatts of interim power during construction. The 25-year AEC-OVEC contract was the largest one of its kind ever entered into by a single customer in the history of the electric utility industry.

OVEC's two generating plants will use approximately 7,400,000 tons of coal annually which will be supplied by five major midwest coal companies. All of the coal will be transported via the Ohio River which passes both of the OVEC installations. The cost of the coal and its transportation is expected to run OVEC nearly 30 million dollars each year.

The electric power generated by the Clifty and Kyger Creek plants will be transmitted to the Portsmouth Area project by four 330,000 volts super-high voltage lines, two coming from each plant. The voltage to be transmitted will be the highest in operation anywhere in the United States.



This Peter Kiewit Sons' Co. cleanliness control labor crew employed in the X-330 process building was chosen as the group to appear in this edition of THE ATOMIZER on the basis of its safety record and job performance. First row left to right are: Walt Pennington, W. R. Roberts, Robert Hopper and Foreman R. C. Lawson. Second row: J. F. Arnett, W. B. Ridgeway, L. N. McCall and James Crase. Third row: R. F. Hanson, R. E. Redoutey, Oliver Newman and H. V. Cunningham. Absent when the picture was taken were F. N. McJunken and Superintendent Sam Bottaro.



Published fortnightly by Peter Kiewit Sons' Co., its subcontractors and affiliated companies for all employees and their dependents on the Portsmouth Area U. S. Atomic Energy Commission project. "THE ATOMIZER" is edited and printed as a function of the PKS Recreation Division, Luther F. Poling, chief.

Editor Stan Spaulding
 Photographer D. J. Landstrom
 Telephone 2887

NEW HIGHWAYS—CURSE OR CURE?

As new sections of the four-lane highway open up, a question arises. Are we safer or in greater danger in getting to and from work?

On the old roads congestion forces the reckless motorist to drive at a reduced speed even though it is against his ideas of how fast you should travel. On the new highways this bottleneck is eliminated. He can speed up and weave in and out at will.

Excessive speed is the number one killer. That is why the Ohio State Highway Patrol is cracking down so hard on motorists who exceed the maximum speed limit of 50 miles per hour, and we owe them a real debt of gratitude for the outstanding job they are doing.

It is up to us to cooperate by obeying traffic signs and posted speed limits. Further, we should stay alert at all times and do a good job of defensive driving. At this time of year travel is at its peak. Thousands of tourists have been added to the normal flow of traffic who are impatient to get to their destination and in many cases unused to highway travel. We may have to compensate for their recklessness by quick thinking on a moment's notice.

Staying alive and free of crippling injury is a challenge to our ability and common sense. Let's meet that challenge and eliminate the needless suffering that has come to so many of our people.

George C. Holling, General Manager
 Peter Kiewit Sons' Co.
 Portsmouth Area AEC Project



Pictured above are supervisory personnel and employees of the Accounts Payable Division of the PKS Accounting Department. In the top photo are Accounts Payable Division supervisory personnel with Accounting Department Director John Emshwiller. Seated are Allen Moon (left) and Dottie Arthur. Standing left to right are: E. E. Crout, Russ Fable, Joe Phegley, Accounts Payable Division Chief W. D. McDonald, Emshwiller, C. P. Hauck and Ed Roda. In the center picture are employees of the Freight and Subcontracts Branches. Seated left to right are: Joan Curry, Ann Truitt, Jo Ferrell, Louise Murphy, Naomi Renfro and Edna Edwards. Standing left to right are: Pete Drummond, Joyce Sewell, Barbara Hylar, Joe Manley, Cliff Wyatt, Dave Smith, Clarence Saathorff, Millie Fowler and Howard Searles. In the lower photo are personnel of the General Invoice Branch. Seated left to right are: Kathleen McCambridge, Virginia Rose, Mary Harvey, Jackie Neff, Gerry Hankins, Helena Hatcher, Opal Oldfield and Dotti Dinsmore. Standing are: Toni Himes, Rose Miller, Lucy Harr, Norma Frederick, Cleo Guyman, Bill Thornberg, Harold Patrick, Harold Little, Juanita Sales, Sara Foley, Beulah Pettry, Naomi Tullius and Estelleen Clay.



Currently the security billboards on the project have had pictured on them the Statue of Liberty along with the slogan "Security Means This and More".

The many liberties we enjoy in our country are so common to us that we may often take them for granted and feel that they could never be taken from us. Each of us can probably think of examples of other countries that have lost their liberties, and you will agree then that this could happen to us. If our remaining secure only gave us the freedom which we so immensely enjoy in this country, then, security is worth all the efforts we can employ.

Each individual employee on this project should feel the work he or she accomplishes here is vital to our nation and that we do have contact with our nation's security interest. We should also think of ourselves, regardless of the work we do, as being a link in the security chain and that chain is no stronger than its weakest link.

As we pass the security billboards leaving or entering the project, we should meditate for a few minutes on the meaning of security. We have defined security as a place of safety or freedom from unsafe conditions. Let us all feel that we have a great responsibility in guarding our freedom from any enemy

that may try to take it from us. We are living in the greatest country in the world! Let us keep it this way by being "security conscious".

Employees Leaving States On Vacation Must Secure Approval

With vacation time at hand for many employees, Portsmouth Area personnel are reminded by the PKS General Manager's office of their security obligation in connection with any foreign travel during vacation periods.

In order to comply with security regulations of the Atomic Energy Commission, any "Q"-cleared employee who contemplates travel outside the continental limits of the United States must notify the Commission of his intention.

To avoid any possible delay in securing approval for such travel, employees should contact Wm. H. Gillen, Investigation Section, PKS Plant Protection Division, located in the northeast wing of the temporary Personnel Building. Preparation of the necessary form for approval can be handled only at this point. The Investigation Section will also notify those concerned when approval is granted.

A CHIP on the shoulder indicates there's wood higher up.

Thousands Of Invoices Processed By PKS Accounts Payable Division

Processing thousands of invoices covering everything from carpet tacks to cranes and staples to steel girders is the daily task facing employees of the PKS Accounts Payable Division.

The Accounts Payable Division is one of the three divisions comprising the PKS Accounting Department directed by John Emshwiller. The Accounts Payable Division, under the supervision of W. D. McDonald, is composed of Freight, General Invoice and Subcontracts Branches and Travel, Returnable Containers, Files, Clarification and Invoice Control and Registry Sections.

Since its inception back in September of 1952, when one person paid the bills and performed all the duties, the Accounts Payable Division has grown to approximately 50 employees including personnel of the CPFF subcontractors.

The Accounts Payable Division is charged with the proper payment of all expenses incurred in connection with the construction of the Portsmouth Area plant with the exception of payrolls.

Working in close cooperation with the Warehousing, Engineering, Procurement and Contract Awards Departments, the division endeavors to insure that each vendor's invoice receives prompt handling and payment at the earliest possible date.

In addition, the division maintains sufficient records to reflect the current status of all items and prepares the necessary accounting reports required for the project.

GOOD HOUSEKEEPING TO PAY OFF

Management at the Jackson Heights subdivision housing project has announced a plan for good outdoor "housekeeping" to "pay off" for residents living there during the summer months.

Rental Agent Bill Clark and Owner Dave Anderson said several attractive prizes would be offered to residents displaying the best-looking lawn at the end of the summer.

The idea is being promoted to stimulate residents to keep their homes and lawns in excellent condition. The judges for the contest will be members of the Jackson Garden Club.

The first place prize winner in the contest will receive a television set, with an electric fan, roaster oven, clock radio and deep fryer also on the list of awards.

— DRIVE CAREFULLY —



The fire loss for one average year would supply a formidable task force of two airplane carriers, three heavy cruisers, four light cruisers, ten destroyers, one submarine, ninety dive bombers and one hundred fighter planes?

Fires can start by themselves without the application of flame. (Spontaneous ignition in such common articles as oily dust cloths, mops, waste, or paint rags easily heated to ignition point).

More persons were burned to death during the first year after our entrance into World War II than were killed in all branches in the Armed Forces in the same period of time.

A study of fires made by the Fire Prevention Bureau indicated that a larger percentage of the serious fires, both from the life and property damage standpoint, were those which originated in basements and cellars.

Common household dusts from waste materials and food may explode with terrific force.



Swimming instructor Morgan Shrader is pictured above giving instructions to a group of youngsters enrolled in the "Learn To Swim" program for the project employees' children at Lake White. The two-week course is being sponsored by the PKS Recreation Division. The Recreation Division has announced plans to hold a second two-week course for both adults and children beginning on July 19.

Recreation Division Announces Plans For Second Learn To Swim Program

The PKS Recreation Division has announced plans to conduct another "Learn To Swim" course at Lake White beginning Monday, July 19. The program, which will run two weeks, will be open to both children and adults connected with personnel employed at the Portsmouth Area project.

Don Wedge of the Recreation Division, who is in charge of the program, said registration for the second two-week course would be held on July 19 only, at the "Beachcomber" at Lake White beginning at 9:00 A. M. Adults or children wishing to enroll should appear at this time. A \$1.50 entry fee will be charged for each applicant.

Classes for the 10-hour course will be scheduled in accordance with the number of persons enrolling. Wedge said that well over 100 youngsters took part in the first course which ended today.

Due to the large number of requests from adults and the number of youngsters turned down for the first course, because of overcrowded classes, the Recreation Division set up plans for the second program which will run from July 19 through July 30.

DANCE AT WESTERN HILLS

Project employees and their families living in the Chillicothe area are invited to attend a Block Party and Square Dance at Shawnee Court, Western Hills apartments addition, in Chillicothe, from 8:30 to 10:30 P. M. on Friday evening, July 18.

Persons are asked to bring their own chairs, cushions or blankets. Soft drinks and ice cream will be on sale at the party. In the event of rain the party and dance will be held on Saturday evening, July 17, at the same hour.

The committee on arrangements is composed of Ray Daniel, David Williams, Arnold Hays, Phil Zito, Thomas Fleming and Don Kear.

TICKET APPLICATIONS FOR OSU GRID TILTS AVAILABLE JULY 19

It has been announced by Luther F. Poling, chief of the PKS Recreation Division, that ticket applications for Ohio State University 1954 football games will be available at the Recreation Division office in the temporary Personnel Building after July 19.

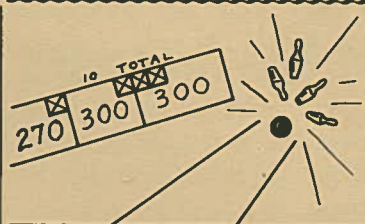
The Buckeyes will play six home games at Ohio Stadium on a nine-game 1954 schedule. Listed on the home slate are: Indiana on September 25, California on October 2, Iowa on October 16, Wisconsin on October 23, Pittsburgh on November 6 and Michigan on November 20. Away tilts will find Ohio State at Illinois, Northwestern and Purdue.

Single game ticket prices are: box — \$4.50, reserved — \$3.50, field bleachers and south stands — \$3.00. All seats are reserved. Season book prices are: box — \$27.00, reserved — \$21.00, field bleachers and south stands — \$18.00.

Home games in September and October are slated to begin at 2:00 P. M. (EST) with kick-off time for November games set for 1:30 P. M. (EST).

Safety Scoreboard

1954	1953
THROUGH JUNE	
LOST TIME ACCIDENTS	
28	6
GOV'T VEHICLE ACCIDENTS	
12	14
TOTAL EMPLOYMENT	
18,827	5,521



BOWLING

CHILICOTHE MIXED LEAGUE

TEAM	W	L	Pts.
Officer-Roda	16	5	22
Sollott-Noles	14	7	19
Wilson-Hille	13	8	16
Pinta-Jernigan	10	11	15
Hornb'g-Poling	10	11	13
Clark-Nicholson	9	12	12
Davis-Rutherford	8	13	10
Clay-Fockler	4	17	5

PORTSMOUTH WOMEN'S LEAGUE

TEAM	W	L	Pts.
Atomic Bowl.	15	9	20
Ten Pins	14	10	19
Spotters	13	11	18
Old Scioto	13	11	17
Ranchers	9	15	12
Stewburners	8	16	10

PORTSMOUTH LEAGUE

TEAM	W	L	Pts.
Recreation	17	1	23
Scioto Ranch	13½	4½	17½
Schmidt's T. P.	11½	6½	15½
R-N	10	8	14
Subcontracts	9	6	13
Grinnell	9	9	12
G & V	8	10	10
Dodgers	6	12	10
Medical	6½	11½	8½
Highway Equip.	5	13	6
By Jupiters	5	10	6
Tin Knockers	4½	15½	4½

HOOSIER HUMOR

Editor's Note: The following quip made by the famous Indiana humorist Herb Shriner in an article in Coronet might well apply to many of our area vehicle operators.

"These roads are really improved now. As far as I know, two buggies can even pass through at the same time. You see a lot of automobiles taking the place of horses. Fact is, today it's sort of a combination—the engine taking the place of the horse's front end and the driver taking the place of the

No-Hitter And Triple Play Highlight Action In Project Softball Leagues

Softball competition sponsored by the PKS Recreation Division took on an atmosphere of the "majors" last week with a no-hitter being pitched in the Jackson-Wellston League and a triple play pulled in the A-Plant Area League at Piketon.

Lloyd "Dutch" Rankin turned in the season's second no-hit no-run game when the Grinnell Operators trounced Giffels and Vallet 21-0 in an abbreviated five-inning tilt on July 1 at Wellston.

Previously Jim Bennett of the Clerks in the Portsmouth League had hurled a no-hitter against George Koch Sons, on May 26.

Rankin struck out 13 of the 16 men that faced him during his five-inning stint. He walked one and two others were easy put outs on infield grounders. Rankin is employed as an operating engineer with the Grinnell Corporation.

The season's first triple play was made in A-Plant Area League play at Piketon by the Waverly Jerboans against Building Services. With none out and men on first and second in the fourthinning Robert Gambill of Building Services lined sharply to shortstop Bill Haywood. Haywood snapped a throw to second baseman Wayne McCulty for a force out and McCulty relayed the ball to first baseman Ralph Mynheir for another force out to complete the triple play.

In spite of the triple killing and two double plays Building Services walloped Waverly 13-5.

Officer-Roda Entry Winner In Chillicothe Mixed Bowling League

The first champion in summer bowling competition sponsored by the PKS Recreation Division was crowned last week when the Officer-Roda team topped seven other entries in the Chillicothe Mixed League.

Members of the winning combination were Alice and John Officer and Ed and Letha Roda. The winners won 16 and lost only five to finish three points ahead of the second place Sollott-Noles entry who won 14 and dropped seven.

In addition to finishing in first place the Officer-Roda entry also won a major share of the league's special prizes. The winning team timbered the high-team three-game series of 2206, while Letha Roda was the top woman bowler with an average of 142 and Alice Officer second with 129. Virginia Jernigan was third with 124.

The high male average was recorder by Harold Newbauer with 174 for nine games. Bill Clark was second with 171 for 12 games and Ed Roda third with 167 for 18 games. The league's high single game was rolled by the Nicholson-Clark entry with 810.

IT IS A PITY that \$2.00 bills are so scarce these days, when they'd come in so handy for buying a dollar's worth of almost anything.



"DUTCH" RANKIN

SOFTBALL STANDINGS

LITTLE LEAGUE SOFTBALL

Week of July 1

TEAM	W	L	Pct.
Piketon P. H. A.	3	0	1.000
Waverly Wildcats	3	0	1.000
Wakefield	3	0	1.000
Mitchells	2	1	.667
Little Beaver	1	2	.333
Riverview	1	2	.333
Waverly Estates	1	2	.333
Sun Valley	1	3	.250
Waverly Terrors	0	2	.000
Nelsons	0	3	.000

PIKETON LEAGUE

TEAM	W	L	Pct.
Grinnell Fitters	7	0	1.000
Building Services	6	1	.857
Goodyear	4	2	.667
Hunter's Tr. Ct.	4	3	.571
Waverly Jerboans	3	5	.375
Piketon P. H. A.	2	4	.333
Schmidt's Trailers	2	4	.333
Given's Court	1	5	.167
I. B. E. W.	1	6	.143

JACKSON-WELLSTON LEAGUE

TEAM	W	L	Pct.
PKS	4	0	1.000
Grinnell	3	1	.750
R-N	4	2	.667
R-N Estimating	2	4	.333
G & V	1	4	.200
Goodyear	1	4	.200

PORTSMOUTH LEAGUE

TEAM	W	L	Pct.
Heavy Const.	7	1	.875
Clerks	7	3	.700
Grinnell Engineer.	7	3	.700
Cashiers	6	3	.667
Steel Supply	4	4	.500
Procurement	4	5	.444
Geo. Koch Sons	4	5	.444
Engineers No. 1	3	5	.375
Engineers No. 2	1	8	.111
Grinnell Fiscal	0	6	.000

AEC GOLF TOURNEY SET

The AEC Employee Association at the Portsmouth Area project has announced plans for its second annual golf tournament to be held at the Elks Country Club course in Portsmouth on July 10 and 17.

FRANTZ-FERRELL WED

Janet Louise Frantz and Charles J. Ferrell, Jr., were married in St. Mary's Church at Portsmouth on June 19. Janet is

CLASSIFIEDS

The following classified ads are free to any Portsmouth Area project employee but must be confined to items pertaining to transportation and lost and found articles.
Phone 3442 or 2887

WANTED—Riders from Portsmouth on 8:00 to 4:30 shift. Call *H. E. Castle*, Ext. 2541.

WANTED — Ride or riders from Jackson to X-326 Bldg. on 8:00 to 4:30 shift. Contact *R. Krieg*, Ext. 3632.

WANTED—Riders from Waverly or Piketon on 8:00 to 4:30 shift to Adm. Bldg. area. Contact *E. E. Hale*, Ext. 2575.

WANTED — Rider from Barboursville or Huntington, W. Va. on 7:30 to 6:00 shift. Call *Jim Barber*, Barboursville 3196.

WANTED—Ride from Egbert Stop on 8:00 to 5:30 shift. Call *Lionel Frazier*, Scioto 1043X.

LOST—Brown billfold, reward offered. Finder please contact *Harry Bishop*, Ext. 3632.

LOST — Red billfold somewhere in Adm. Bldg., no money but important papers and identification. Finder please contact *Gladys Robinson*, Ext. 2278.

WANTED—Riders from Jackson on 7:00 to 4:30 shift. Contact *Sam Jenkins*, Ext. 3493.

WANTED — Two riders from Eden Park on 7:30 to 5:00 shift. Call *Earl Fortune*, Ext. 2766.

WANTED—Riders or to form car pool from Wellston or Jackson on 7:30 to 5:00 shift. Contact *Reba Pinney*, Ext. 3429.

LOST — Pair of prescription ground sun glasses in X-333 area Friday afternoon, June 25. If found please contact *E. Geiger*, Ext. 2553.

Using Salt Tablets Will Lessen Chance Of Heat Exhaustion

With the intense heat and humidity of the summer months bearing down, project employees are reminded that taking salt tablets daily is one of the best precautions against cramps and heat exhaustion.

The PKS Building Services Division has placed and maintains salt tablet dispensers on all water fountains and barrels throughout the construction and administration areas easily accessible to all personnel.

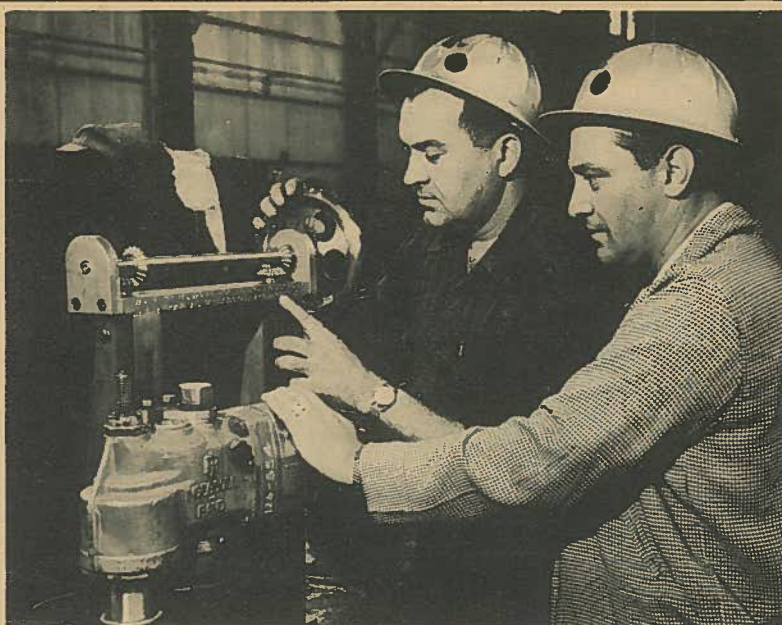
Dr. E. H. Stanley, chief of the PKS Medical Division, has recommended three to six salt tablets be taken each day by all employees during the summer months.

"Persons working in offices or places where heat is not so intense should take at least three tablets daily, while employees working in the field will require up to six tablets," said Dr. Stanley.

CAVIN-SPAULDING MARRY

Glenna Cavin of Wurtland, Kentucky and Stan Spaulding of Portsmouth were married on July 2 in the First Baptist Church at Wurtland by Rev. Clyde B. Stephens. Glenna is employed in the PKS Office Engineering Division. Stan is assistant chief of the PKS Recreation Division and editor of THE ATOMIZER.

— DRIVE CAREFULLY —



Pictured above is Grinnell Corporation Millwright Foreman Fred Habermehl (left) and General Foreman Bernie Gugel with a precision jig constructed for drilling holes for drift pins. The machine was conceived and constructed by Grinnell Pipe Fab Shop personnel under the supervision of Gugel and Habermehl in conjunction with Millwright Superintendent J. VanHuss. The above machine is an example of one of the many ideas that have been submitted and put into use that have saved both time and money on this project. Features of the above machine have enabled workmen to get a more exact bearing thus eliminating a greater amount of vibration.

Employees Are Urged To Exercise Extreme Caution At Rail Crossings

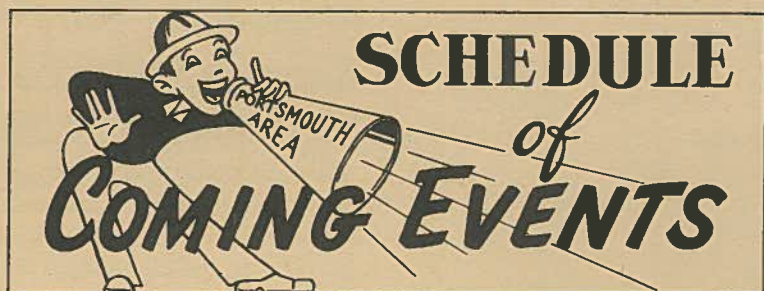
All project personnel driving private and government vehicles in the Construction Area have been requested by Operations Unit Manager R. L. Senior to exercise extreme caution at the jobsite's numerous railroad crossings. At the present time over 30 miles of railroad track have been constructed on the project.

"In general the operation of our trains has been scheduled so as to minimize delays at the various crossings during the morning and evening hours

when traffic is the heaviest; however, it is impossible to curtail this operation entirely," said Senior.

Employees are urged to obey all warning signals given by train flagmen at crossings in an effort to eliminate a serious accident. Accidents of this type have been averted thus far only by the alertness of train crews.

Chief H. F. Cook of the PKS Guard Force said stern disciplinary action would be taken against employees failing to comply with all signals.



- | | |
|---|--|
| <p>SATURDAY, JULY 10</p> <ul style="list-style-type: none"> • Employee Dance—Chillicothe Elks—9:00 P. M. • Dance—Piketon PHA—Community Building—9:00 P. M. <p>MONDAY, JULY 12</p> <ul style="list-style-type: none"> • Portsmouth Softball League • Grinnell Engineering vs Steel Supply—8:30 P. M.—No. 3 Field • Expediting vs Engineering No. 1—8:00 P. M.—Riverside • Piketon Softball League • Building Services vs Grinnell Fitters—8:30 P. M. • I. B. E. W. vs Hunter's Court—8:00 P. M. <p>TUESDAY, JULY 13</p> <ul style="list-style-type: none"> • Portsmouth Softball League • Clerks vs Geo. Koch Sons—8:00—Riverside • Piketon Softball League • Waverly Jerboans vs Piketon PHA • Goodyear vs Building Services—Jackson-Wellston League • Goodyear vs Grinnell—7:30 P. M.—Wellston Field <p>WEDNESDAY, JULY 14</p> <ul style="list-style-type: none"> • Portsmouth Softball League • Cashiers vs Engineers No. 2—8:30 P. M.—No. 3 Field • Grinnell Engineering vs Grinnell Fiscal—Legion—8:30 P. M. • Geo. Koch Sons vs Steel Supply—Riverside—8:00 P. M. • Jackson-Wellston Softball League • PKS vs G & V—7:30 P. M.—Wellston Field • PKS Men's Bowling League—Classic Lanes—Portsmouth <p>THURSDAY, JULY 15</p> <ul style="list-style-type: none"> • Portsmouth Softball League • Engineers No. 1 vs Clerks—8:30 P. M.—No. 3 Field • Grinnell Fiscal vs Heavy Construction—8:00 P. M.—Riverside • Piketon Softball League • Piketon PHA vs Schmidt's—8:30 P. M. • Grinnell Fitters vs Givens Court—8:00 P. M. • Jackson-Wellston Softball League • R-N Estimating vs Reynolds-Newbery—7:30 P. M.—Wellston Field | <p>FRIDAY, JULY 16</p> <ul style="list-style-type: none"> • Block Party—Square Dance—Western Hills, Chillicothe—8:30 P. M. <p>MONDAY, JULY 19</p> <ul style="list-style-type: none"> • Portsmouth Softball League • Engineers No. 2 vs Heavy Construction—8:30 P. M.—No. 3 Field • Grinnell Fiscal vs Steel Supply—8:00 P. M.—Riverside • Piketon Softball League • Schmidt's Court vs Waverly Jerboans—8:30 P. M. • Givens Court vs Goodyear—8:00 P. M. <p>TUESDAY, JULY 20</p> <ul style="list-style-type: none"> • Portsmouth Softball League • Expediting vs Clerks—8:00 P. M.—Riverside • Piketon Softball League • I. B. E. W. vs Piketon PHA—8:30 P. M. • Hunter's Court vs Grinnell Fitters—8:00 P. M. • Jackson-Wellston Softball League • PKS vs R-N Estimating—7:30 P. M.—Wellston Field <p>WEDNESDAY, JULY 21</p> <ul style="list-style-type: none"> • Portsmouth Softball League • Cashiers vs Grinnell Engineering—8:30—No. 3 Field • Engineers No. 1 vs Geo. Koch Sons—8:30—Legion Field • Engineers No. 2 vs Grinnell Fiscal—8:00 P. M.—Riverside • Jackson-Wellston Softball League • Grinnell vs Reynolds-Newbery—7:30 P. M.—Wellston Field • PKS Men's Bowling League—8:00 P. M.—Classic Lanes <p>THURSDAY, JULY 22</p> <ul style="list-style-type: none"> • Portsmouth Men's League • Clerks vs Steel Supply—8:30 P. M.—No. 3 Field • Grinnell Engineers vs Heavy Construction—8:00 P. M.—Riverside • Piketon Softball League • Hunters Court vs Goodyear—8:30 P. M. • Building Services vs I. B. E. W.—8:00 P. M. • Jackson-Wellston League • G & V vs Goodyear—7:30 P. M.—Wellston Field |
|---|--|



Last year 38,000 people were killed and 1,100,000 injured in automobile accidents. Relatively few of these accidents were the result of mechanical defects in the machines. The majority were caused by poor drivers; or by good drivers who momentarily failed to control their cars. The inexperienced and unskilled driver risks his life and endangers pedestrians and other motorists every time he ventures on the road.

As the driver of a motor vehicle on the project, you are charged with its safe operation. You are also responsible for the protection of life and property, or not only your own, but other users of the roads. You must keep your vehicle under such control at all times so as to avoid a collision, governing your speed by the condition of the road and the amount of traffic on it.

Arm signals must be used at all times while driving any vehicle on the project. The correct signals are displayed in the poster on this page.

Emergency vehicles on this project are ambulances, fire vehicles and guard patrol cars. They are emergency vehicles only while they are displaying a red light or sounding the siren, or both. When you see or hear one coming from any direction, pull off the road on your right as far as you safely can, and come to a complete stop, remaining at a stop until all the emergency vehicles have passed, then proceed on unless ordered otherwise.

Traffic accidents are prevented by strict attention to driving, courtesy, and the unnecessary taking of chances. To make this project a safe one, drive in a safe and sane manner at all times.

The time to prevent an accident is before it happens.



GRINNELL EMPLOYEE IS PROJECT'S 16th HIGHWAY FATALITY

The tragic toll of traffic fatalities involving Portsmouth Area project employees rose to 16 over the long fourth of July weekend with the death of J. Q. Richardson.

Richardson, 35, a Grinnell Corporation employee, was killed instantly when his car went out of control and crashed into a cliff on Tennessee State Route 25-W, eight and one-half miles south of Jellico, Tennessee, around 2:00 A. M. on Saturday, July 3.

The Knoxville Detachment of the Tennessee State Highway Patrol said Richardson was apparently thrown from his car when it hit the cliff and the machine rolled back crushing him beneath. A passenger with Richardson identified by authorities as Al Cullis was not injured seriously.

Richardson's death was the first involving a project employee since Memorial Day when three other Grinnell personnel lost their lives. Of the 16 fatalities recorded to date, nine have been employed with the Grinnell Corporation.

Richardson, a native of Texarkana, Texas, was on his way home for the week end when the accident occurred. While working on the Portsmouth project he lived in Lucasville.

CAINS HAVE SON

Captain and Mrs. John D. Cain announce the arrival of a son named Laird Parker on June 29, at General Hospital in Portsmouth. The baby is the fourth for the Cains. John is Troop "A" commander of the PKS Guard Force.

— DRIVE CAREFULLY —