



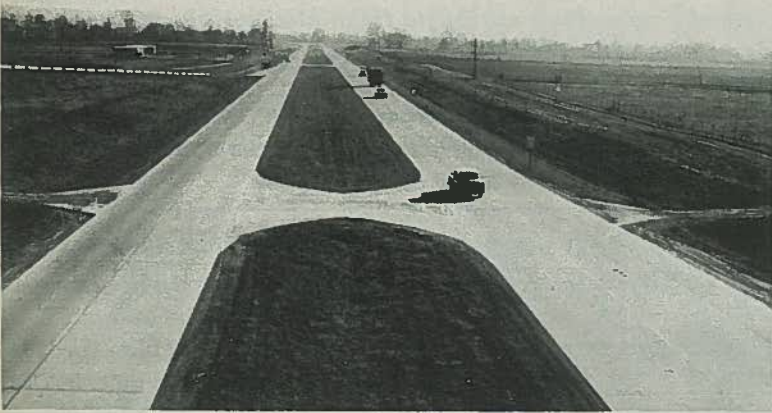
The ATOMIZER

BE SECURITY CONSCIOUS

SUPER HIGHWAY U. S. 23 TO OPEN FROM PORTSMOUTH - CHILlicothe



The job to home drive will no longer be as shown above—for with the completion of the new highway traffic will move as below.



State Patrol Cautions Against Speeding And Weather Factors, Safe Driving Stressed

The long awaited completion of U. S. Highway 23 from Portsmouth to Chillicothe has finally been accomplished, according to a statement released by Joseph N. Doyle, Division Engineer of the Ohio State Department of Highways District Nine office in Chillicothe.

The section from Portsmouth to the Atomic plant site will have been open prior to this edition of THE ATOMIZER, and the highway official stated that the section between Chillicothe and the site will be open this week end with the exception of the short distance immediately south of the city corporation limits.

The Portsmouth State Highway Patrol office has advised that the completion of the new highway has brought about a complete reversal of statistics, as the number of accidents has declined to practically nothing while the number of speeding arrests and warnings has risen.

Corporal Earl Sauner of the patrol stated, "All project employees are to be commended highly on their conduct during the trying two year construction period, as more than 99% observed all traffic regulations."

Sauner cautioned that with the new super highway and the increase of speed, it should not be christened the "Bloody Highway". The road is now much easier to patrol and their hope is that all employees may drive the distance to and from work without tragedy.

One special warning was issued in regard to the condition of the asphalt paving in the early hours when covered by frost or with rain or snow. The overheads and bridges are extreme-

ly dangerous during the winter months as they freeze almost instantly and all employees are urged to cross with extreme care with special reference to "throttling" the engine in the middle of the structures.

At the issue of this paper there has been but one accident on the new highway. Through cooperative, safe and courteous driving this record can be maintained in addition to reducing the patrol's huge number of arrests.

"Deck the halls with boughs of holly"

Recreation Division Planning Christmas Decorating Contest

Plans are now being completed for a Christmas Home Decoration Contest for all project employees in the area who are residing in trailer villages and the two PHA projects.

All rules and entry blanks for the contest will be printed in the next edition of THE ATOMIZER.

Judging of decorations will be based on only that which can be seen from the exterior of the trailer or flat-top, and may include window displays.

ANATOMY IS SOMETHING THAT EVERYONE HAS — BUT IT LOOKS BETTER ON A GIRL.

Piketon Public Housing Residents Receive U. S. Rural Mail Service

An outstanding example of what an organized group of determined construction people can do to make living conditions better through cooperation with local officials, was demonstrated this week when Piketon Postmaster Howard Thompson announced that the residents at the Piketon Public Housing project would start receiving mail delivered to their homes.

Prior to November 16, it had been necessary for the Project employees living at the site to drive daily to Piketon to inquire for mail from the office's general delivery service. Many times it had been impossible to make the trip daily, and consequently vital messages from home were not received in time to act accordingly.

Recognizing this and many other problems, the residents acted early in May to form a community council.

Immediately following the formation of the council a postal committee was appointed, and after many sessions with Housing Director Carl Barrett, Thompson, and other U. S. Mail officials, the Public Housing Administration contracted the work for installation of 903 rural mail boxes.

The boxes were grouped to serve the needs of the more than 3000 residents, and Postman Dan Daily was hired to begin delivery yesterday. It will still be necessary for residents to pick up parcel packages at the office, but all other mail will be placed in the boxes in front of the homes.

MEET THE MANAGEMENT:

Kiewit Controller R. E. Smathers Guides Project's Mammoth Fiscal Unit Operation

When Peter Kiewit Sons' Co. was awarded the prime construction contract for the Portsmouth Atomic Energy Project, the responsibility of administering fiscal policies was assigned to R. E. "Ron" Smathers. Ron, serving in the capacity of Controller, heads the Fiscal Unit.

He joined Peter Kiewit Sons' Co. in 1948 as Office Manager on the United Benefit Office Building job in Omaha and has held responsible positions on many Kiewit projects since. Prior to his assignment to Portsmouth, he was Assistant Controller for North Atlantic Contractors (contractors for project Blue Jay).

Prior to his experiences with Peter Kiewit Sons' Co. he had begun as early as 1941 in the construction business. To supplement his construction background he has attended business college, the University of Omaha and Rutgers University in New Jersey. "Ron" served in the U. S. Navy during World War II.

Although quite enthusiastic about all sports, he is most frequently seen touring the "links" at the Portsmouth Elks Country Club and at the Terrace Club

swimming pool with his two children, Sharon, age 13 and Randell who is 9.



R. E. SMATHERS

He is a member of the Elks, Managers Club, American Legion, National Association of Cost Accountants and a Mason. The Smathers are presently residing at 2222 Cleveland Avenue in Portsmouth.



The four men primarily responsible for the rural postal service which began at the Piketon PHA Wednesday are shown above inspecting a set of the newly installed boxes in front of homes on Pine Avenue. Opening a box to the left is Dan Daily of Piketon who will serve as postman for the project and looking on with approval are H. R. Thompson, Piketon Postmaster; Carl Barrett, PHA housing manager; and C. L. Nichols, PKS Heavy Construction Division who is council manager for the project community council.



Published fortnightly by Peter Kiewit Sons' Co., its subcontractors and affiliated companies for all employees and their dependents on the Portsmouth Area U. S. Atomic Energy Commission project. "THE ATOMIZER" is edited and printed as a function of the PKS Recreation Division, Luther F. Poling, chief.

Photographers D. J. Landstrom
Glenn Dearing
Telephone 2887

WE HAVE CAUSE TO GIVE THANKS

Next Thursday is Thanksgiving Day; a day of special significance in the lives of all Americans.

In addition to the many blessings we share with our fellow countrymen, we, here at the Project, have some special things to be thankful for:

Work has progressed satisfactorily without any major catastrophes.

Our accident rate has been low, thereby permitting the enjoyment of this feature event by those who might otherwise be maimed or missing.

We are playing an important part in providing for the defense of our country and contributing to the future economic welfare of its citizens.

We who were strangers to Southern Ohio have been accepted as friends and neighbors. We have become part of the communities in which we reside and are able to share in community life.

I am sure all of you join me in giving thanks for our good fortune in these matters.

George C. Holling, General Manager
Peter Kiewit Sons' Co.
Portsmouth Area AEC Project

Interviewing Section Responsible For Placing Thousands Of Persons

Many project employees will immediately recognize the personalities in the pictures accompanying this story as those first seen upon arrival at the project.

Although perhaps one of the smallest sections at the Portsmouth Area plant site, the Interviewing Section of the Employment Division has been primarily responsible for the complete staffing of all personnel that will be needed to complete the huge operation.

At the beginning of construction activity, PKS interviewers were placing field and office personnel for all companies engaged in work on the project, including both CPFF and Lump Sum Subcontractors. As each CPFF grew in size and the demand for employees increased, it became necessary to utilize independent hiring branches for them which were then coordinated with the central PKS Employment Division.

All persons inquiring about work are required to complete a standard manual or non-manual application form and are granted interviews regarding placement in positions commensurate with their qualifications. Since September of 1952, approximately 48,000 men and women have been hired and an additional estimated 75,000 have been interviewed.

The hiring peak during the two-year period was reached in May of 1954, when a total of 3,418 field and office employees were placed. One month later a record number of 8,515 persons visited the employment office and were interviewed.

In addition to interviews the section administers placement tests and in the past year more than 2,487 typing, shorthand, and intelligence question-

naires were completed.

At one time a force of field recruiters travelled throughout the U. S. covering many states assisting the section in securing qualified persons. Field recruiting is presently limited to advertising in newspapers and the consideration of applications received as a result of such advertising.

The activities of the section must be coordinated very closely with the Investigation Section which verifies all statements made on the application form. The Processing, Records, and Indoctrination groups then join forces to complete the final placing of the new employee.

Heading the hiring program for the Reynolds-Newbery joint venture is William Thomas of Chillicothe, who is responsible for the placement of all electrical personnel.

The Grinnell mechanical program is directed by Otis Armstrong, a veteran employment man who has served on several similar installations.

All sheet metal personnel working under the George Koch contract are placed by Billy Clay, while G. F. McGrath and John Anundson head the PKS non-manual and manual programs respectively.

"STORK" VISITS JOHNLEYS

Mr. and Mrs. John Johnley, III, announce the birth of a four pound daughter, Ann, born in Mercy Hospital. Johnley is employed in the Processing Branch of Central Receiving.

Thanksgiving Safety Theme For Employees Expressed Poetically

Think of the blessings we

Have at this time of year

And the fullness of life and good cheer,

Never forgetting blessings are

Kept in store for all who know that

Safety is the best blessing of all.

GOD intended it so, but we must

Invest some of our time and thoughts if

Victory is to be ours

In the battle of life preservation,

Never relaxing in our efforts to reach the

Goal of safety for all.



Shown above is the family of E. J. Jernigan who is employed on the Portsmouth Area project as an ironworker for PKS. The Jernigans arrived at the project more than a year ago from the Savannah River plant in Aiken, S. C., where they had been for two years.

Originally from Jacksonville, Florida, the family purchased their trailer and started to South Carolina when Cy Boy, their youngest son, was but three months old. "Mother" Ann, who is a registered nurse, stated, "Cy Boy doesn't know anything but the trailer as home as he was so small when we left Florida."

Pictured in their very attractive and cozy trailer in the Cloverleaf Trailer Park are left to right, Michael who is six, Cy Boy age three, Mrs. Jernigan, Karen age four, and the family dog, "Joe".

Editor's Note: Each edition THE ATOMIZER will print a selection similar to the above to recognize the important role that the family plays in the life of our employees.



Shown above are supervisory personnel of the project's coordinated hiring program. Pictured discussing a placement problem are (left to right seated) Otis Armstrong, Grinnell; William Thomas, Reynolds-Newbery; Jerry McGrath, PKS; and John Anundson, PKS. (Standing left to right) Billy Clay, Koch Sons; Denease Pack, R-N stenographer; Phyllis Johnston, PKS stenographer; and Eloise Gill, Grinnell stenographer.



Shown awaiting the arrival of craft and field workers at the usually busy early morning hour are (left to right) Donna Kirkwood, R-N; interviewer Lynn Gemperline, PKS; R-N interviewer Gene Craynon; "Charley" Ford of Grinnell; Walt Barker, R-N; and Mary Lou Nemeth of Grinnell.



Outlined plans for the day to insure efficient and courteous handling of the many non-manual employment applicants is the topic of discussion as PKS Interviewer Ed Colbert (standing, extreme left) speaks to his interviewing cohorts. Shown listening attentively are (left to right) PKS Interviewers Hilda Weems and Spencer Tiffany; Jon Ogden of Grinnell; PKS Receptionist Ruth Deitchel; PKS Interviewer "Chuck" Hawkins; and Ramona Judd and Jean Hawkinberry who maintain the applications for the entire group.

CIMOTA WOMEN NAME LEADERS

At their regularly scheduled meeting held the second Tuesday of each month at the YM-CA, the Cimota Women's Club in Chillicothe, 39 strong, elected new officers for the coming season.

The meeting was underway at 1:00 P. M. promptly and prior to bridge and canasta games the group installed Mrs. Catherine Briggs as president; Mrs. Nancy Kerr, secretary; and Mrs. Carolyn Updegraff as treasurer.

The club also meets on the fourth Tuesday of each month beginning at 7:30 P. M. at the K of C club rooms. All wives of project employees living in Chillicothe are cordially invited to participate in the club activities

"PITY THE MAN"

Blest is the man who works with a smile
Knowing his labor to be worthwhile
While
Knowing the pleasure of building with skill
The moments fly quickly as he works with a will.
Proud in the knowledge he has part in a plan
That points to a happier life for man,
Knowing in labor he finds true wealth
For it offers him happiness, contentment, and health.
But pity the man—who can hardly endure
Who labors alone—his pay too secure
Every hour is a day—each day seems a year
His eyes hold no laughter as evening draws near.
He finds no such pleasure in building with skill
He has neither the Love, the Heart, nor the Will,
Finding no comfort taking part in the plan
His life is so empty—Oh, Pity the Man.

O. E. Baye



Shown above is the winning costume at the Halloween Masquerade Ball held at the Piketon PHA on October 30. The originators, Mrs. Toni Williams left, and Mrs. Monterey Geren, perfectly duplicated the dancing girls who are very popular TV performers. The costume was selected from more than sixty masqueraders at the dance.

Recreation Division Schedules Employees' Dance For November 20

All project employees are invited to another of the Recreation Division sponsored dances to be held tomorrow night at the Memorial Hall in Jackson.

The dance will feature the music of Lou Martin's band with an entertaining intermission show of dancing by Kitti and Dell.

Employees will be admitted upon presentation of identification badges at the party which runs from 9 P. M. until 1 A. M.

BOB HENSON ASSIGNED TO POST LEFT BY M. V. EVANS TRANSFER

Operations Unit Manager R. L. Senior has announced the promotion of R. W. Henson to the position of acting Division Superintendent of the Heavy Construction Division. Henson replaces M. V. "Mike" Evans who will be transferred to another PKS construction operation.

Evans was honored by his many friends on the project when they held a farewell party at the Lake White Club several days before the effective date of transfer which was November 15.

LEWIS-MEYERS PLEDGE VOWS

Barbara Meyers and Ralph Lewis were married October 25, at Richmond, Indiana.

CLASSIFIEDS

The following classified ads are free to any Portsmouth Area project employee but must be confined to items pertaining to transportation and lost and found articles.
Phone 3442 or 2887

WANTED—Riders from New Boston to X-330 Building on 8:00 to 4:30 shift. Contact Fred Adkins, Ext. 3421.

WANTED—Ride from N. High Street, Chillicothe, to Personnel Bldg. on 8:00 to 4:30 shift. Contact Denease W. Pack, Ext. 2608.

WANTED—Four riders from Portsmouth on 8:00 to 4:30 shift. Contact L. E. Collins, 7-2578 Portsmouth.

WANTED—Ride from Portsmouth to Grinnell Field office on 8:00 to 4:30 shift. Contact E. W. Smith, Ext. 3363.

WANTED—To join car pool from South Shore to X-330 Bldg. on 8:00 to 4:30 shift. Call C. E. Watts, Ext. 3443.

WANTED—Ride from Sciotoville to X-333 Bldg. on 8:00 to 4:30 shift. Contact Tom King, Ext. 3843.

WANTED—Three drivers to join pool from Jackson Heights to Adm. or Personnel Bldg. on 8:00 to 4:30 shift. Contact Jim Allen, Ext. 3245 or Jackson 881-M.

WANTED—Two riders from Portsmouth on 8:00 to 4:30 shift. Contact Eula Chafin, 4-4213 Portsmouth or Ext. 2701 jobsite.

WANTED—Three riders from Sciotoville to X-326 Bldg. on 8:00 to 4:30 shift. Contact Ed Riggs, at number 2 airlock in X-326 Bldg. or 6426 Harding Ave., Sciotoville.

WANTED—Two cars to go in pool from Latham to job on 8:00 to 4:30 shift. Contact William Rhodes, Ext. 2883.

CHESS CLUB INTEREST NOTED

All project employees who would like to join a recently organized chess club are asked to contact John Bennett Extension 2282 or the Recreation Office Extension 3442.



Pictured above are three Grinnell Corporation crews whose coordinated activities have been performed with high regard for safety, and this week are being honored by THE ATOMIZER on the basis of outstanding job performance and excellent safety record. Shown in top picture is a Grinnell pipe crew. Standing left to right are: Building Superintendent W. Crawford, J. T. Smith, E. R. Moore, W. C. Poland, D. M. Elliott, O. J. Berkley, H. J. Fety, and General Mechanical Superintendent W. F. Kistler. Kneeling are: C. P. Ballengee, S. Ragonese, R. P. Boring, R. W. Andrews, and H. E. Skelton. Pictured in center above, the Engineering crew is the second phase of the efficient operation. In the picture are, back row: W. R. Humphrey, E. P. Jackson, J. A. Morgan, F. E. VanHoss, T. M. Arthur, Assistant Chief Engineer N. Roslovic and F. Whiddon. Front row; J. R. Lauer, H. E. Lochte, M. R. Prusack, W. K. Maher, Jr., W. W. Delph, Jr., R. S. Williams, R. Torres, H. L. Haymaker, and Chief Engineer C. E. Narup. The Instrumentation crew (bottom) as the third member of the crew selected for the safety award picture are standing: Superintendent J. H. Moates, General Foreman D. E. Massey, Foreman A. H. Maledon, G. O. Talkington, E. Bailey, G. Howard, J. Johnson, B. Gaut, C. R. McCaffrey, and General Mechanical Superintendent W. F. Kistler. Kneeling are: W. F. Appleton, O. L. Thomas, J. W. Holmes, R. W. Hilton, C. Murphy, and Building Superintendent W. Crawford.



Because automobile accidents are unintentional rather than deliberate, people say, "That's awful. But he skidded. It couldn't be helped. It was an accident." But why did he skid? In some manner he was negligent. His tires were too smooth. He was driving too fast. Perhaps he was looking off to one side. A whole chain of causes can be traced back—all of them under the control of the driver.

For this reason you as a driver are the most important factor in the automobile accident situation. You know the condition of your car—you can see the condition of the road, judge the hazards that face you and govern your actions accordingly. Unfortunately there are countless combinations of circumstances which face drivers and they do not always judge every situation correctly. Accidents can be prevented . . . when all drivers learn, not only the rules of the road, but also the even more important, broader rules relating to courtesy, caution and common sense.

Death rides behind glaring headlights. Glare not only blinds you as the guilty driver approaches but your blindness continues from four to eight seconds after he passes. If your own lights glare they do not light the road properly for your own safety. Tilt them, so they will not cause the driver ahead to turn up his rear vision mirror and be unaware that you want to pass. Keeping your windshield clean all the time will reduce glare.

Excess speed causes skids on curves. You may have taken a familiar curve at relatively high speed many times without accident. But if a gravel truck has dropped a few pebbles, or if it is raining, the surface of the road may be entirely different. Enter a curve so slowly that you can give the engine a little gas. With power turning the

wheels you are not so likely skid.

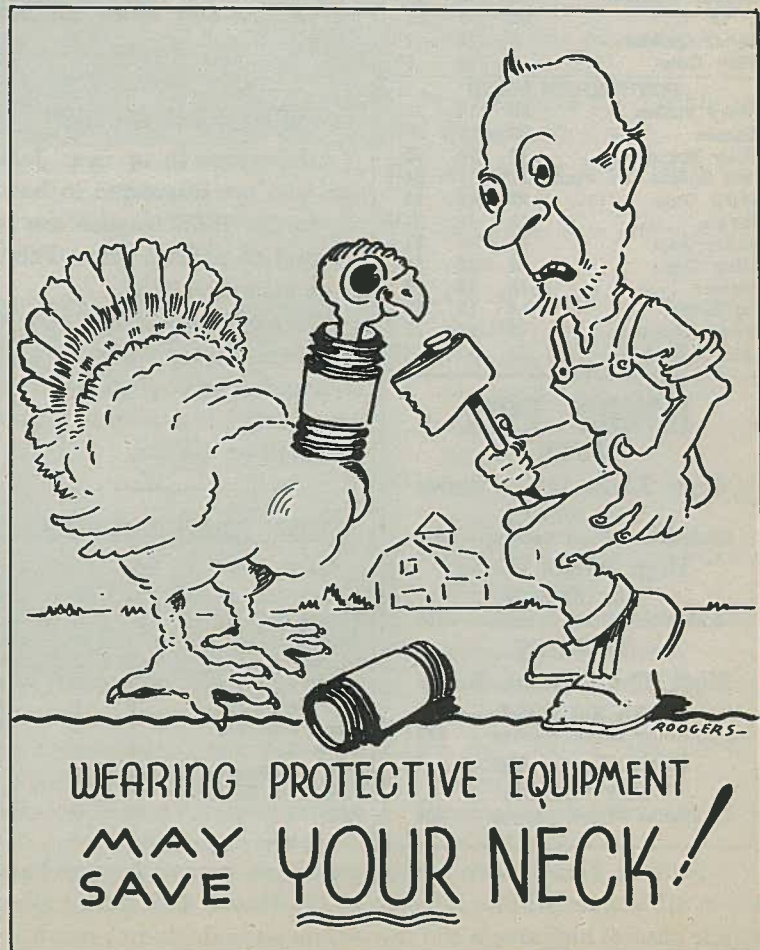
Never ignore a signal. Nearly one quarter of the accidents which result in deaths or injuries are caused by drivers who do not have the right of way. To ignore a "slow", "stop", or any other traffic signal is one way of taking a right of way that is not yours. It also makes you a potential murderer or suicide.

Never pass on corners. Two out of every five automobile accidents occur at street intersections and attempting to pass at this point is one of the major reasons for these crashes. The passing driver's vision is obscured until it is too late to stop if another car is coming. At best, you could gain only a second or two, and you might lose your life. The odds aren't worth it!

Do not pass on curves. At today's driving speeds you must be able to see ahead from one hundred to several hundred feet all the time. The only place you can do this is on the straight-away. On curves your vision is almost certain to be limited by the car ahead to an extent that makes an attempt to pass extremely dangerous. If you wait, your chances of reaching your destination are greatly increased.

High speed causes many accidents. Drive at reasonable speeds on the open highway. At high speeds you do not have time to stop or swerve for the unexpected hazard such as the farmer's truck as it emerges from a driveway. A tire might blow out; you might hit a soft shoulder . . . and a crash would result instantly.

Remember, most traffic accidents can be prevented.



WEARING PROTECTIVE EQUIPMENT
MAY SAVE YOUR NECK!