



# The ATOMIZER



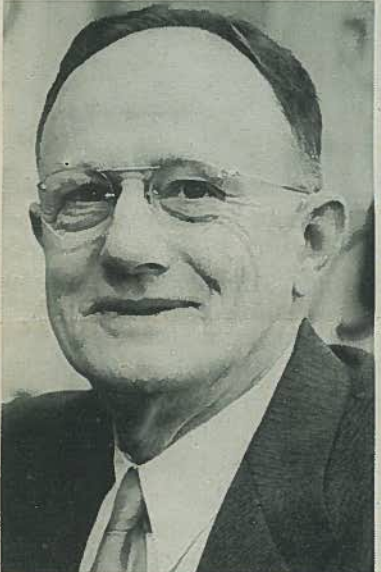
## WEDNESDAY, DECEMBER 15th, TO BE NATIONAL "S-D" DAY

### MEET THE MANAGEMENT:

#### HEATING & VENTILATION INSTALLATION HEADED BY KOCH'S G. W. HOELSCHER

Now in his 44th year with George Koch Sons Company, Inc., George W. Hoelscher, as General Superintendent, is in charge of GKS Operations Unit on the Portsmouth Project.

George began his career with the Koch firm when he was 16 years old and during his 44 year period advanced through the organization to the position of Plant Superintendent in Evansville, Indiana. He was transferred to Portsmouth in April, 1953.



GEORGE W. HOELSCHER

George, who is very sports minded, has held season tickets for the past two seasons for all Ohio State football games and proudly displays over his desk the Evansville Courier "Beat the Experts" football award, which is representative of the keen interest the veteran Superintendent holds for the pigskin sport. He also attends many of the Cincinnati Reds baseball games.

Hoelscher is a member of the famous "Central Turners Club" in Evansville, the Evansville Foreman's Club, Sheet Metal Contractors Association and Association of Building Contractors. Locally he is a member of the Managers' Club, K of P and several other fraternal organizations.

Mr. and Mrs. Hoelscher, who recently celebrated their 40th wedding anniversary, are the parents of two daughters, one living in Boston, Massachusetts, and the other one living in Evansville. They are also very proud grandparents of two 10 year old granddaughters. The Hoelschers are presently residing in Portsmouth at 1825 Vinton Street.



#### Project Personnel Assisting In Promotion Of Traffic Safety Program In Southern Ohio Area

An idea conceived in the minds of the men in the PKS Indoctrination Branch has begun to grow into a large safety campaign as a result of a meeting held here at the jobsite on November 17. (Above photo)

Representatives of the State Highway Patrol, Governors Traffic Safety Council, and D T & I safety personnel met with the PKS committee for highway safety to discuss proposals to better the area's traffic safety record.

The committee stated that the purpose of the meeting was to determine "what we could, through a coordinated effort, do to reduce the number of traffic accidents."

Several steps outlined at the meeting are now being put into effect and all efforts are being

concentrated on a national program. The month of December is to be known as National Safe Driving Month which will be climaxed on December 15, on which President Eisenhower is asking that 108 lives be spared by completing the day without one traffic fatality. December 15 has been proclaimed National S-D Day. (See editorial)

All local officials are joining forces with civic groups, schools, industry, and service clubs in the area to assist in the all-out effort to promote traffic safety.

#### Santa Planning Busy Sked For Area Kids

Recreation Division Chief Luther F. Poling, has announced that final plans have been completed for the annual Santa Claus visits to all children in the A-Plant area trailer villages and housing projects.

All parents are requested to check the schedule printed below and be sure that the "Kiddies" get to visit with "Ole Saint Nick". Due to the busy schedule Santa will not be permitted to linger too long at each stop if his appointments are to be kept.

- M., O'Dells.
- Thursday, December 16: 4:00 P. M., Piketon PHA; 5:20 P. M., Cunninghams; 5:50 P. M., Waverly PHA; 7:00 P. M., Moores; 7:45 P. M., Cloverleaf; 8:20 P. M., Dawsons.
- Tuesday, December 21: 5:00 P. M., Maugers; 5:20 P. M., U. S. 23; 6:00 P. M., Blairs; 6:30 P. M., Hughes; 7:00 P. M., Western Hills.
- Wednesday, December 22: 3:00 P. M., Hunts; 3:40 P. M., Owens; 4:00 P. M., Pleasant



Children who do not reside in a trailer village or PHA project are invited to attend Mr. Claus's visit at the stop nearest home.

Santa's Schedule: (time indicates arrival time only)

- Wednesday, December 15: 4:00 P. M., Andersons Trailer Pk.; 4:45 P. M., Rosemount; 5:15 P. M., Old Scioto; 5:50 P. M., Breezeway; 6:20 P. M., Fairgrounds; 6:50 P. M., Sun Valley; 7:25 P. M., Community; 7:55 P. M., Wakefield; 8:40 P.

- Acres & Rainbow; 4:30 P. M., Givens; 5:00 P. M., Brooklyn; 5:35 P. M., Little Beaver; 6:10 P. M., Hunters; 6:45 P. M., Wrights; 7:00 P. M., Sunset; 7:40 P. M., Atomic.

- Thursday, December 23: 4:00 P. M., Jasper Gardens; 4:35 P. M., Jones; 5:00 P. M., Sun Fish; 5:45 P. M., Schmidts and Nelsons; 6:30 P. M., River-views; 7:10 P. M., Piketon; 7:50 P. M., Plateau; 8:15 P. M., Scioto Ranch.

#### STATE HIGHWAY TRAFFIC LAWS RELATED TO SCHOOL BUSES CITED

In response to many inquiries concerning the Ohio Motor Vehicle Laws with special reference to school bus regulations THE ATOMIZER has obtained the following information from the Ohio State Patrol State Office in Columbus.

#### Operations Unit Adds Safety Scaffold To AEC Construction Projects

PKS Safety Chief J. F. Madura has announced another accomplishment by PKS forces in the field of devices to make conditions safer for all employees in the construction industry.

Pictured below is a "Telescopic Safety Scaffold" designed for the protection of workers which had its origin here at the jobsite through the safety-conscious minds of the men in the PKS Operations Unit under the direction of R. L. Senior. The scaffold has been tried and proven here at the job through a strenuous testing program and is earmarked as a decisive asset to all work involving the use of scaffolds.



Mr. Humphrey Gilbert, Safety Engineer of the Safety and Fire Protection Branch of the Atomic Energy Commission, on a recent annual safety inspection of the project commented that the PKS innovation was an outstanding contribution to the safety field. Mr. Gilbert requested the design plan in order that contractors throughout AEC installations might benefit in the use of the safety device. AEC is constantly on the watch for all such items in an effort to better working conditions.

The scaffold is one of many similar safety devices which PKS and other contractors on the project have contributed to the construction world.

Employees are requested to note Ohio Gen. Code 4511.35 which states: "Whenever any highway has been divided into two roadways by an intervening space, or by a physical barrier, or clearly indicated dividing section so constructed as to impede vehicular traffic, every vehicle shall be driven only upon the right hand roadway, and no vehicle shall be driven over, across, or within such dividing space, barrier, or section, except through an opening, crossover, or intersection established by public authority. This section does not prohibit the occupancy of such dividing space, barrier or section for the purpose of an emergency stop or in compliance with an order of a police officer."

Section 4511.75 further states, "(A) The driver of a vehicle upon the highway outside the limits of a municipal corporation, upon meeting or overtaking from either direction any school bus which has stopped on the highway for the purpose of receiving or discharging any school child, shall stop the vehicle not less than 10 feet from such school bus and shall not proceed until such school bus resumes motion or until signaled by the driver to proceed. (B) Where the highway is divided into two roadways as set forth above a driver of a vehicle proceeding on one roadway of said highway need not stop when approaching a school bus which is stopped on the other roadway of said highway for the purpose of receiving or discharging school children. The driver of a vehicle proceeding on the same roadway of said highway as the school bus shall comply with (A) above."

Although the law states that stopping is not required when in the opposite lane of a divided highway, all employees are urged to watch carefully for children who might dash into the road and to reduce speed when approaching a bus.

#### Personnel Employees To Dine-Dance At Lake

G. F. McGrath, dance committee chairman for the Personnel Unit, has announced plans for a gala holiday party for all Personnel employees to be held at the Lake White Club on Saturday, December 18. Tickets may be obtained from Marjorie Bryant in the Personnel Bldg.

# SHEET METAL STORAGE YARD BEGINNING OF KOCH'S HUGE INSTALLATION PROCESS



Published fortnightly by Peter Kiewit Sons' Co., its subcontractors and affiliated companies for all employees and their dependents on the Portsmouth Area U. S. Atomic Energy Commission project. "THE ATOMIZER" is edited and printed as a function of the PKS Recreation Division, Luther F. Poling, chief.

Editor ..... Don Wedge  
 Photographers ..... D. J. Landstrom  
 Glenn Dearing  
 Telephone 2887

On Wednesday, November 17, a meeting sponsored by the Indocination and Training Branch of our Personnel Department, was held here on the project to discuss ways of reducing the number of highway accidents in this area.

Attending that meeting were members of the State Highway Patrol, County Officials of Scioto, Jackson and Ross Counties, and representatives of the press in the surrounding area.

I am confident that this meeting has helped to coordinate accident prevention efforts in the community. I hope it will create enough additional interest in safe driving to reduce the terrible death toll that has already claimed the lives of 21 of our fellow workers.

We feel privileged to be able to help in this campaign and stand ready to do everything in our power to make every day an "S-D Day" or Safe Driving Day in Southern Ohio.

George C. Holling, General Manager  
 Peter Kiewit Sons' Co.  
 Portsmouth Area AEC Project

## HOLIDAY DECORATION CONTEST PLANS SET

ENTRY BLANK  
**CHRISTMAS HOME DECORATION CONTEST**  
 (MUST BE MAILED BY DEC. 10, 1954)

NAME .....

ADDRESS .....

MAILING ADDRESS .....

ENTRIES RESTRICTED TO  
 EMPLOYEES RESIDING IN TRAILER  
 VILLAGES OR P.H.A. FLAT-TOPS.

Following the initial announcement in the November 19 edition of THE ATOMIZER, the Recreation Division has released complete details on the holiday Home Decoration Contest.

The Yule season is always highlighted by the multitude of brightly decorated homes nestled in the hills and villages of southern Ohio and it is hoped that the contest will in some way contribute to the real "Spirit of Christmas" which is already upon us.

### Contest Rules

1. Entries must be postmarked not later than midnight December 10, 1954. Mail to: Christmas Contest, Recreation Office, Peter Kiewit Sons' Co., Box 288, Portsmouth, Ohio.
2. Upon receipt of entry blanks each entrant will be assigned a number to display in a conspicuous place on the set.
3. Only employees who are residents of trailers or flat-tops in or around trailer villages, cities, or PHA projects are eligible.
4. For purposes of fair comparison, villages will be placed in four districts. The most attractive and appropriate decorations in each district will be selected. (See Rule 9)
5. Decorations will be judged on only that which can be seen from the outside of the home. Window displays and lighting effects which can be seen from the outside will be considered.
6. Each district winner will receive a cash award of \$25.00. The best display of the four district winners will receive an additional \$25.00, thus making a total of \$50.00 for the Atomic Area's top decoration.

7. Judging and the selection of winners will begin on December 19, and continue through the week of December 23.
8. Winners will be announced in the December 31st edition of THE ATOMIZER.
9. The trailer villages and flat-tops are divided into districts as listed below.
  - District I: Anderson, Rosemont, Breezeway, Fairgrounds, Sun Valley, Community, Wakefield, Odells.
  - District II: Piketon PHA, Waverly PHA, Cunningham, Mitchells, Mauger, U. S. 23, Blair, Hughes.
  - District III: Scioto, Dawson, Cloverleaf, Plateau, Piketon, Sunfish, Jones, Jasper Gardens, Schmidts, Nelsons, Riverview, Riverview Inn.
  - District IV: Atomic, Sunset, Wrights, Hunters, Little Beaver, Brooklyn, Givens, Owens, Hunts, Pleasant Acres, Rainbow.

## Vast Yards Are Site Of Receiving, Assembly & Delivery Of All Material

Editor's Note: This is the first in a series of four articles concerning the George Koch Sons Co. Operations Unit. Following the completion of the series on Koch, each of the other CPFF contractors will be covered.

When the many thousands of pounds of pre-fabricated sheet metal of various sizes and shapes and huge supply of exhaust fans with all their appertenances arrive at the Portsmouth Area installation from vendors throughout the U. S., it is taken to the Koch Company's huge sheet metal storage yard under the direction of Supt. M. R. Gibson. At one time the material completely filled 20 acres of storage ground.

Many vendors ship their orders directly to the buildings, but the majority of all material is unloaded in the storage yard by cranes and "hysters". The machines place the metal on farm wagons pulled by tractors or jeeps and it is taken to designated storage areas in the yard.

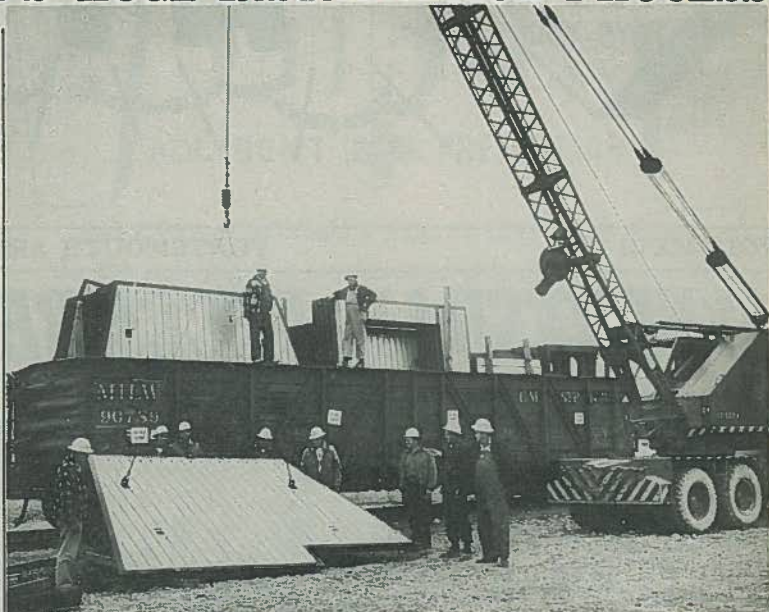
All pieces of material are marked to aid the workers in the assembly shop in fitting miles and miles of ducts together. As orders are received from the different building areas, the needed pieces of materials are brought from the storage yard to the assembly shop where it is placed on ingenious assembly racks which appear to turn "square corners".

In the shop ducts are assembled to adhere to the specifications on the order and after fitted together tightly to prevent any leakage it rolls on through the shop for return to the storage yard to be stored by units for delivery.

Assembled parts are loaded on farm wagons by hysters and then towed to the "steam cleaning" process. Every piece of sheet metal to be installed in the buildings is then washed clean by spraying with steam, prior to delivery.

Shipping crews make final disposition of material from the storage yard as the farm wagons pulled by tractors travel in all directions to buildings in need of the metal.

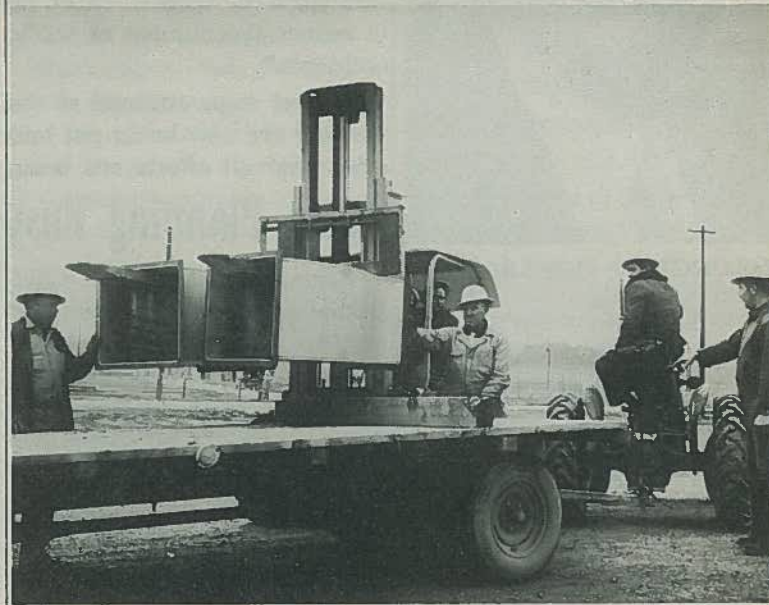
Next: "Sheet metal erection."



Shown unloading paneling just arriving from a vendor are (left to right on the ground) A. M. Allsaps, J. B. Buley, R. W. Tice, L. Lewis, W. L. Hayden, C. Martin, and Foreman H. J. Yeager and M. Jones. On top of the car are R. Hollabough and E. Harmon (right). Settling the panel to the ground is rig operator C. Taylor.



Shown working in the assembly shop about to join together duct are sheetmetal workers (left to right) B. D. Parsons, E. S. Gresham, F. F. O'Connell, and D. A. Silliman. This phase of operation follows the delivery of materials from the storage yard.



Carefully adjusting his "hyster" loaded with small pieces of duct is Henry Brown while Guy Donaldson, (extreme left) and Andy Hollingshead prepare to load the farm wagon. Driving the tractor which will take the metal to assembly or buildings is Rulley Bloomfield. Spotting for "hyster" operator Brown is John Jordan, Sr.



Senior engineering clerk Charley Gunnoe, Gen'l foreman Homer Minton, Foreman Floyd Hayes and Tex Braxton (left to right) look on as Ass't engineer Sam Harrod discusses, and illustrates with prints, a sheet metal order involving a problem.



Steam cleaning of all sheet metal going to buildings is the job assigned to "Shorty" Hooper at the storage yard. Assisting him are sheet metal worker C. A. Spicer and operating engineer J. C. Botkins. Teamster R. George watches on as he waits to pull his farm wagon of metal to be cleaned.



**CLASSIFIEDS**

The following classified ads are free to any Portsmouth Area project employee but must be confined to items pertaining to transportation and lost and found articles.  
Phone 3442 or 2887

**WANTED**—Ride from Chillicothe to X-330 Bldg. on 8:00 to 4:30 shift. Contact R. Luchtmann, 35569.

**WANTED**—Riders from Portsmouth on 8:00 to 4:30 shift. Contact David Horton, Ext. 25-16.

**WANTED**—Ride from Jackson on 4:30 P. M. to midnight shift. Call Art Stepheson, Ext. 3404.

**WANTED** — Two drivers to join car pool from Jackson or Jackson Heights on 8:00 to 4:30 shift. Contact Jim Allen, Ext. 3245 or Jackson 881M.

**WANTED** — Ride from New Boston to X-530 area on 8:00 to 4:30 shift. Contact B. R. Mullins, Ext. 2760.

**WANTED**—Riders from Portsmouth to X-330 Bldg. on 8:00 to 4:30 shift. Contact R. L. Foster, Ext. 3159.

**WANTED**—Riders from New Boston on 8:00 to 4:30 shift. Contact C. J. Jamison, Ext. 33-38.

**WANTED**—Two riders from Huntington on 8:00 to 4:30 shift. Contact J. Halley, Ext. 33-38 or Huntington 24759.

**WANTED**—Riders from Portsmouth to Whs. 17 or 18 or Grinnel Field Office. Contact Mrs. James Collins, Ext. 3663.

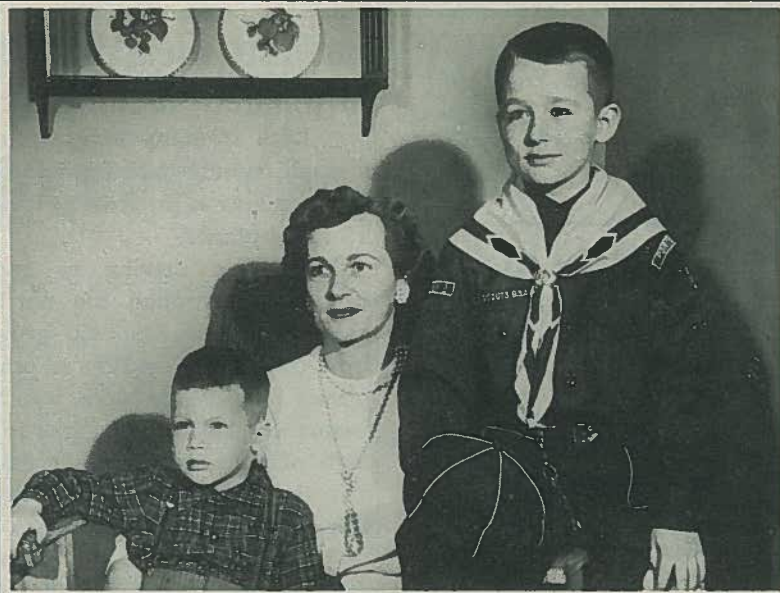
**WANTED**—Riders from Minford or Meades area on 8:00 to 4:30 shift. Contact Phyllis Copley, Ext. 3593.

**WANTED**—Ride from Huntington on 8:00 to 4:30 shift. Contact Dolores Mills, Ext. 22-36.

**WANTED**—Two riders from Jackson to X-330 Bldg. Contact R. Kraft at west end bay 16 or 205 Florence Avenue, Jackson Heights.

**WANTED**—Riders from Waverly to Adams Bldg. on 8:00 to 4:30 shift. Contact O. A. Reed, Ext. 3295.

**FOUND**—Pair of glasses. (Lost on night shift) Ground floor of X-333 Bldg. Contact Joe Crawford, Ext. 3632.



Shown above is the family of Charles E. Fraley, A. M. Kinney party chief, who appear as this week's Construction Family as selected by THE ATOMIZER. The Fraleys arrived at the Portsmouth Area installation in September of 1952 from their home in Moorehead, Kentucky. Mr. Fraley ("Chuck") is no stranger in the construction business as he has served with the Kentucky State Highway Department, C & O railroad construction, and with several independent contractors in and around Moorehead. As can be seen, George Wayne who is eight, (right) has adapted to his new surroundings by becoming a very active cub scout. Mrs. Fraley is a cub den leader and the family is quite active in the Franklin Ave. Methodist Church in Portsmouth, Ohio. "Kay" (center) states that the task of caring for Larry, four years of age, and George is a busy one, but that their stay in Portsmouth has been extremely pleasant.

**CHILICOTHE WOMENS CLUB TO GATHER FOR CHRISTMAS PARTY**

The Cimota Womens Club announces a Christmas Dinner and Card Party to be held at the Scioto Lodge on December 14th. The lodge is located on Stony Creek Road south of Chillicothe to the left of U. S. 23.

The affair is to get under way at 6:00 P. M. and all who wish to attend are to bring a toy for a boy or a girl which will be turned over to the Salvation Army. The toy should be gift wrapped.

For further information call Mrs. Paul Hagan at 41545 in Chillicothe.

**ADAMS HAVE DAUGHTER**

Mr. and Mrs. Donald Adams of Wheelersburg are announcing the birth of a five-pound one-ounce daughter named Sherry Lynn. The baby was born November 13. Donald is employed in Warehouse 4.

**Holiday Dance Set For E&P Unit, December 17**

All employees of the Engineering and Procurement Unit are invited to a Christmas Holiday dance to be held at the Elks City Club in Portsmouth on December 17th.

Lou Martin and his band will play for the dance which is to run from 9:00 P. M. until 1:00 A. M. The very popular dance team of Kitti and Dell will provide entertainment during intermission.

H. S. Peters is serving as chairman of the committee in charge of the dance and persons who wish to attend may obtain tickets from him or any one of the following committee members: Chuck Roberts, Bob McClarinon, Don Bell, or Eula Smith. A large crowd is expected and all employees in the unit are urged to purchase their tickets early.

**THE BEAUTIFUL OHIO**

The Ohio River is formed by the junction of the Allegheny and Monongahela rivers at Pittsburgh in the western part of Pennsylvania. The distance from Pittsburgh to the mouth of the Ohio at its junction with the Mississippi on a straight line is 614 miles. Following the winding course of the river the distance totals 963 miles. The average rate of flow is a little over three miles per hour in the fall from 1,021 feet above sea level at Pittsburgh to only 322 feet at its confluence with Ole Mississippi. Floods of considerable damage have hit the Ohio Valley with more than 70 feet of water in 1887, 1913, 1927, and in 1937 more than 900 persons died and property worth over \$400,000,000 was destroyed.

The area was alerted this fall when Hurricane Hazel, raging up the east coast, caused the majestic old river to rise to 40 feet resulting in considerable losses to Scioto County farmers.



**"SAFETY—YOU CAN'T SEE IT UNTIL IT AIN'T"**

In the building and construction industry, falls usually constitute about 25% of all lost time accidents. But here, on the Portsmouth Project, we have boosted this average to 55½%. Out of 83 lost time accidents since the job started, we have had 46 accidents which were caused by falls — some from heights up to 42 feet and some on level ground and floor level.

The causes have been of various nature. Lack of alertness on the part of the injured men has been a prime factor in these accidents. They would climb a ladder or scaffold without first checking to see if the equipment was in first class shape—safety-wise.

This lack of alertness is again shown by the number of accidents caused by men tripping over extension cords and stepping on material on floors and slipping.

Another major cause of these falling accidents has been the chance-taker. He will work on a sub-standard scaffold with no guard rails—he will substitute parts of a scaffold—he will not tie off a ladder—he will improvise where he can—and then will justify all of these actions by saying he would only be working in that position for a few minutes, so why spend all the time making sure that the operation will be a safe one.

Management has provided a Safety Department to assist the men in planning their operations. They have also provided all the safety equipment needed to do the job. The workers

seemingly have the knowledge and ability to do a good job. The management group has allowed time for safety meetings to discuss problems and also time to plan and execute a safe operation. Then why will the workers persist in having a bad attitude toward their own safety?

Is it the failure of his supervision? Do they check a worker's knowledge, fitness, and ability to do a certain job? Or do they lack in "follow through" to see if their men are working in a safe manner?

Human failure has been shown in every one of the accidents due to falls. Therefore, the attitude of a worker toward himself, his job, his company, his family and his fellow man is important. It is the responsibility of every worker to do all in his power to create the proper attitude and try to develop the oldest basic instinct we possess—that of self-preservation.

**HISTORICAL CITY**

Portsmouth has an altitude of 527 feet. The city was founded in 1803, incorporated as a town in 1815, as a city in 1851 and was a terminus of the Ohio and Erie Canal opened in 1832.



An operation given little thought by the majority of employees, which actually is very important, is the washing of all vehicles on the project. The washing includes autos, trucks, and all kinds of heavy equipment. Foreman Jake Dunham, who has been in charge of the wash crew for the major portion of its existence, estimates that a total of 17,000 vehicles have been cleaned. Of the total more than 11,000 pieces of heavy equipment were scrubbed to appear as new. It is estimated that all of 300 cubic yards of mud and dust have swirled down the drains in the wash process. Shown in the photo above working on a pick-up are (front left to right) Chester Tackett, R. J. Lemaster, and Jake Dunham, Foreman. Standing to left of vehicle is W. H. Montgomery; shining the roof, Charlie Hall and to the right, Don O'Brien.



Pictured above (top) are supervisory personnel of the PKS Utilities Division, who along with their crew of laborers and operating engineers (below) have been selected to appear in THE ATOMIZER on the basis of safety record and job performance. These men have performed work on water, duct, and underground lines of all types and always with the highest regard for safety. Shown in the top photo, left to right, are: C. F. Bennett, Gen. Foreman; J. L. Hayles, Utilities Superintendent; J. C. Wallace, Ass't. Labor Superintendent.; and J. M. Powell, General Foreman. Front row, left to right, (lower picture) E. B. Riggs, A. H. Amy, S. D. Wolford, E. O. Galle, C. E. Neff, F. M. Smith, E. P. Skaggs, H. Reinhardt, and O. B. Dillinger. Second row: H. E. Galford, C. Hart, J. R. Whitener, E. Emory, O. Adams, F. P. Van Bibbar, T. A. Largent, and C. A. Potts. Third row: J. S. Marshall, J. L. Griggs, E. K. Colby, B. Newsom, W. W. Martin, C. E. Downey, C. R. Matheny, H. F. Smith, R. E. Gregory, O. E. Meade, W. M. Mays, R. W. Boyd, J. K. Woolridge, B. G. Clay, and K. E. Osborn. Top row: J. D. Stutler and C. E. Parks.