



# The ATOMIZER



## "May Your Days Be Merry and Bright"

### MEET THE MANAGEMENT:

### Veteran Construction Superintendent Heads PKS Building Division

John F. Brust, veteran employee of the Peter Kiewit Sons' Co. since 1936, heads the PKS Building Construction Division at the Portsmouth Area installation.



JOHN F. BRUST

John was in the initial cadre of employees assigned to duty at Oak Ridge in July, 1952, to assist in planning and organizing for this job. One of the first persons on the jobsite, he has actively participated in every phase of construction. He directed the construction of all temporary and permanent buildings erected by PKS forces and at one time had more than 2700 employees under his supervision.

He is anything but a stranger in the construction industry after having been more or less "born" into the business with his father. Prior to his joining the Kiewit Company as a bricklayer foreman 18 years ago, he and his father were in the general contracting business working out of their home in Nebraska City, Nebraska. Since that time the amiable building director has been in charge of many Kiewit jobs, some of which include the town site for 5000 people at Garrison Dam, Veteran's Hospital at Albuquerque, New Mexico, and Hills Field in Ogden, Utah, and many others.

John and his wife, who are presently residing at 340 Piatt Street in Chillicothe, are the parents of two children, John and Peggy Jean. The son and daughter have presented three grandsons and one granddaughter to the proud parents. John, the father of the three sons, is a farmer in Nebraska and Peggy Jean (Watkins) is married to a PKS estimator in the Seattle, Washington office of Sound Construction & Engineering.

### THE NIGHT BEFORE CHRISTMAS

'Twas the night before Christmas when through the house



away to the window  
Tore open the shutter  
The moon on the breeze  
Gave luster of middie  
When, what to my  
But a miniature sleigh  
With a little old driver  
I knew in a moment  
More rapid than eagles  
And he whistled and  
"Now Dasher! Now  
On, Comet! On, Comet!  
To the top of the porch  
Now dash away! Dash  
As dry leaves that before  
When they meet with an  
So up to the housetop  
The coursers



of toys and St. Nick  
I heard the pawing of  
lead on the roof  
Saw a little old  
elf  
He  
drove out  
"Happy Christmas  
all a good



His cheeks were like roses,  
His nose like a cherry.  
His droll little  
drawn up like  
the bear  
white as  
ump of  
in his  
e smol  
like a  
rd a b  
rd little belly



hook when he laughed  
bowl full of jelly.  
chubby and plump,  
ht jolly old elf,  
ughed when I saw him  
e of myself.  
his eye and a twist  
rd  
me to know I had  
dread.  
a word but went  
s work.  
the stockings;  
with a jerk,  
And laying his finger  
his nose,  
And giving a



all a good

### TINY SILVIS FIRM NOW COMPLETING THIRD CONTRACT

Perhaps one of the smallest Fixed Price Contractors at the Portsmouth AEC installation is the tiny Silvis Company of Sheboygan, Wisconsin. The company has worked as a "sub-sub" contractor on all three of the contracts which they have had on the project; first under Central Contracting on the Piketon pumping station, then under George Sheaf on the project's water treatment plant, and currently on one of the water recirculation buildings.

Peak employment for the firm on the job was a total of 81 and presently the figure has reduced to 19. As the company's major work is of a mechanical nature on plumbing and heating phases of large municipal and industrial piping projects, the force is primarily pipefitters and welders. The total employment of the company, including this job, does not exceed 150.

Shown in the picture accompanying this story is the chief engineer for the firm, M. R. Stiles, who is about to return to the home office via the airlines after a visit with Project Manager Norman E. Ringel. Ringel, who has been a mechanical superintendent for Silvis since 1947, states that the chief engineer travels the 600 mile flight from Sheyboygan quite frequently and many times with less than two hours notice.

Several projects built by the company include the Benton Harbor (Michigan) sewage treatment plant, Fremont (Ohio) Water filtration plant, and a large hospital for the city of Fort Atkinson, Wisconsin.

Ringel's men have been responsible for the installation of piping from 24 inches to 6 feet in diameter.

Large or small, the Silvis Company is a stirring example of the significant role played by all in the construction of the mammoth U-235 plant here in Southern Ohio.

### Christmas Wishes To You And Yours

Our sincerest personal wishes for a most happy holiday season are extended, with the hope that this and every Christmas might be "bigger and better" than the last.

*John S. Clark*

John S. Clark  
Resident Manager  
Reynolds-Newbery

*George C. Holling*

George C. Holling  
General Manager  
Peter Kiewit Sons' Co.

*G. Ashburn Koch*

G. Ashburn Koch  
Resident Manager  
George Koch Sons, Inc.

*Bruce E. Sherrill*

Bruce E. Sherrill  
Resident Manager  
Grinnell Corporation

### Project Dance At Elks In Chillicothe Dec. 18th

Project employees are cordially invited to attend a dance scheduled for tomorrow night at the Elks Hall in Chillicothe. Music will be supplied by Lou Martin and his band at the affair which will begin at 9:00 P. M. and close at 1:00 P. M.

Admittance requires presentation of employee identification badges. Kitti and Dell will provide entertainment during the intermission.

### KIEWIT CHORALEERS SING FOR VETERANS HOSPITAL PATIENTS

In response to a request from authorities at the Chillicothe Veterans Hospital the Kiewit Choraleers visited the men there yesterday evening, December 16th, to present an array of special Christmas holiday songs. The invitation came as a result of a similar performance by the same group at the hospital last year. Al Hull of the PKS indoctrination section served as chairman in charge of arrangements for the visit.



Shown about to take off for a return flight to Sheboygan, Wisconsin is the Silvis Company's chief engineer M. R. Stiles. Pictured at right is N. E. Ringel, the company's local project manager.



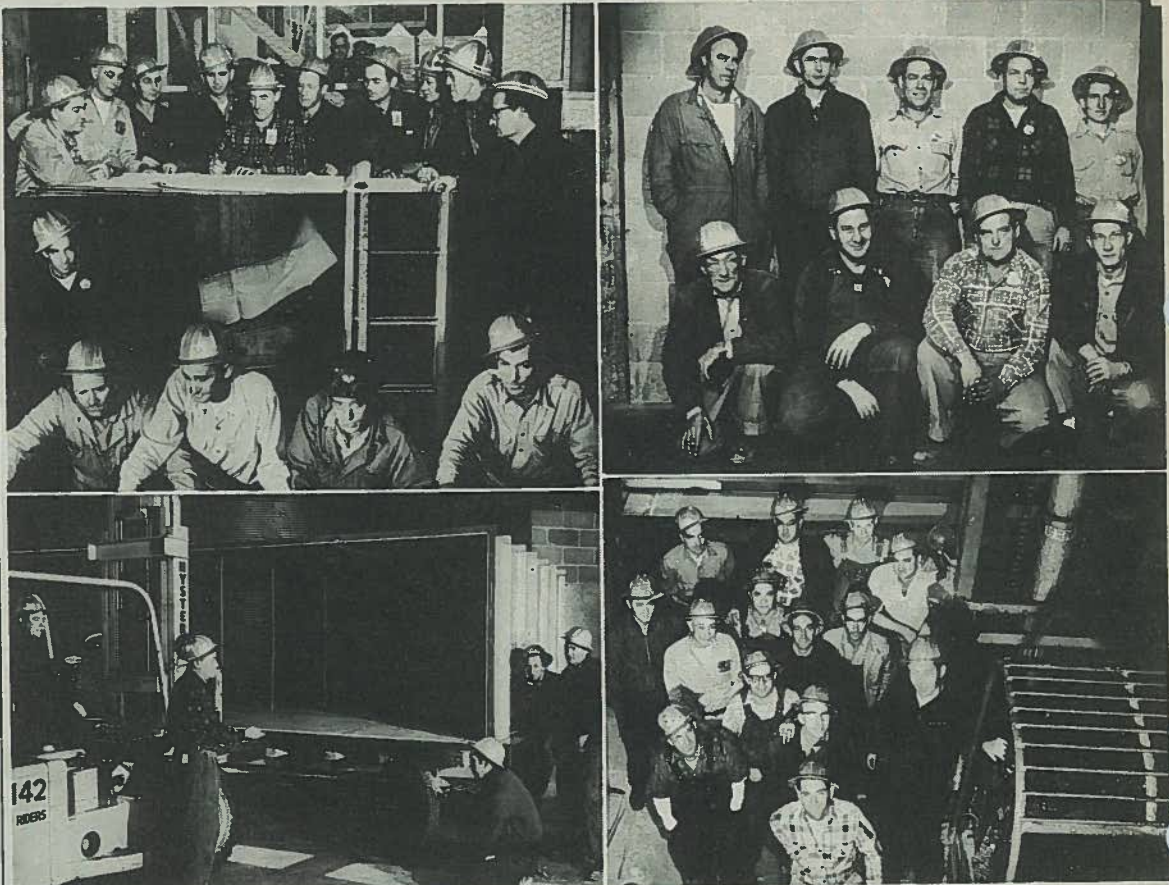


Published fortnightly by Peter Kiewit Sons' Co., its subcontractors and affiliated companies for all employees and their dependents on the Portsmouth Area U. S. Atomic Energy Commission project. "THE ATOMIZER" is edited and printed as a function of the PKS Recreation Division, Luther F. Poling, chief.

Editor ..... Don Wedge  
 Photographers ..... D. J. Landstrom  
 Glenn Dearing

Telephone 2887

# Duct Erection Next In Koch Operation



Shown above are several significant phases of the George Koch Sons duct erection operation which is being conducted at the Portsmouth Area project. Pictured in (1) above at a daily supervisory meeting being led by building superintendent A. B. Michou are left to right: A. J. Brezny, A. L. Barnes, F. Musse, W. F. Boggs, Michou, W. W. Hoyt, W. F. Gordon, J. R. Weisenberger, and assistant superintendents L. V. Dennis and M. Swisher. (2) Preparing lateral connections for assembly are (left to right foreground) Paul Saunders, Ralph Roberts, T. Jones, and Bill Hayes. Directly behind Saunders is foreman L. M. Fitts. (3) Shows the first step in the erection operation, that of unloading duct from farm wagons. The crew pictured about to set a duct piece to the floor consists of "hyster" operator Carl Bloomfield, Foreman Verne Anderson (left foreground), and Vernon Ball who is shown assisting the operator in placing the forks under the duct. Holding the wagon are G. Chapman (left) and Edgar Elan. The men responsible for the final connection of duct lines mentioned in the story with the pictures are shown in (4) above. The canvassing and bolting crew: front row left to right, Foreman W. F. Feazel, H. E. Woodside, B. Dedmon, and D. J. Sturgill. Back row: L. H. Cook, H. B. Hodge, W. A. Taylor, Sam Freeman and P. A. Johnson. Caught by ATOMIZER photographer Glenn Dearing about to lift duct to one of the huge duct stands is the crew shown in (5): Alone, foreground, C. P. Henage; second row left to right, J. W. Hausetton, Jr. Cooper, G. Beck, and hyster operator O. Ginger. Third row, Field Engineer George Haymaker, General Foreman Al Barnes, W. F. Rowles and J. O. Love. Back row, W. P. Weaver, Foreman F. H. Hall, R. G. Traud, and H. E. Arnett.



Newly appointed Resident Manager Bruce E. Sherrill (right) is welcomed to the project by Deputy Resident Manager Newcombe. The two men will direct the Grinnell mechanical contract at the Portsmouth Area project for the home office.

## BRUCE E. SHERRILL GRINNELL CORPORATION'S NEW RESIDENT MANAGER, SUCCEEDS CHAPLIN

Saxby Chaplin, former resident manager for the Grinnell Corporation on the Portsmouth Area project, has announced his transfer from that capacity to Charlotte, North Carolina, after having directed the company's contract here since January of 1951.

He is being succeeded by Bruce E. Sherrill of Atlanta, Georgia, who has served as manager of the company's industrial piping department for the states of Georgia, Alabama, Tennessee, Florida, Mississippi, and Louisiana. Mr. Sherrill was associated with the firm from 1929 until January of 1953 when he joined the P. H. Nichols Company in Atlanta. From January of 1953 he served the Nichols Company as a manu-

facturer's representative until rejoining Grinnell in his present assignment.

Mr. Sherrill is married and the father of five children, three girls and two boys, who are remaining at the family home in Atlanta. The new manager hopes to have his wife and children join him here at the project sometime this summer, and at the present will reside at the Governor's Lodge at Lake White.

"IT IS BETTER to know nothing than to half know many things."



Shown above is the family of Robert Morenz, test crew foreman, for Reynolds-Newbery, who arrived at the Portsmouth Area project one year ago on December 7, from their home in Decatur, Illinois. Pictured in their trailer at Sunset Trailer Park, which has taken them from projects in Decatur, Morrisville, Pennsylvania, Miami, Florida, and Dana, Indiana, are (left) Cynthia, Baby Sandra, Deborah (right), and Mrs. (Agnes) Morenz. Agnes loves to talk of the family hobby—their home in Decatur, which has been under construction for the past three years, and the day when they will move back into the new house.

## Miles And Miles Of Duct Assembly Required For Construction Of Many Project Buildings

Continuing the sequence dealing with the Operations Unit of the George Koch Sons Company the next phase of the installation of heating and ventilating equipment for the project is concerned with the tremendous task of erecting duct in the buildings.

Under the supervision of Area Superintendent Ed Beck, the erection process actually commences with the unloading of the many farm wagon loads of duct which have been brought to the building from the sheet metal storage yard. "Hysters" and a crew of workmen attack the unloading assignment as hundreds of various sizes and shapes are stored in appropriate areas throughout the building. If all the duct that will eventually go into the building were unloaded in one place it would take the entire population (assuming all were good strong men) of a city of 22,000 to merely move the massive structure one foot.

Again the versatile "hyster" is utilized in placing the duct onto huge duct stands where the actual hook-up takes place. Prior to the lift to the stand it is prepared for assembly and gaskets applied. The crew working on the stand apply a temporary bolting and drift pin "hold" to the line and move on for the next connection.

A rapid bolting and canvassing crew moves in behind to continue the "assembly line" with "nut-runners" to tighten the long lines together to avoid

any possible leakage. The number of bolts required to hold the duct line together is fantastic, and many working hours saved with the use of the "nut-runner" tightening device would employ one man for many, many years.

The smaller "lateral connections" are handled by a special lateral assembly crew which places the smaller duct lines together and then run them on to the designated outlet. If all duct work and laterals were put together in one continuous line it would be possible to force air from the plant site to Lucasville—and this staggering figure is for one building alone.

Specialized crews are called upon to perform the installation of all supply and exhaust fans in the buildings for they must be set steadfastly to withstand the tremendous vibrations caused when motors are connected. The entire operation in the field is coordinated closely with both field and office engineering functions.

Test groups go over and over the completely assembled lines and their hook-ups with both supply and exhaust fans to be sure that the entire unit is operating "leak-free". Should the activities of the some 400 men assigned to the sheet metal operation in the building be dir-

(Continued on page 3)

## BENEFIT GUILD AT WESTERN HILLS

Wives of project employees residing at the Western Hill Apartments at an organizational meeting on December 1st have formed the Western Hill Benefit Guild.

The purpose of the group is to promote "neighborly participation in social and charitable activities" for the benefit of the 165 families at the project and others throughout the community of Chillicothe.

At the inaugural meeting Mrs. Atherton was elected president; Mrs. James Matthews, vice president; Mrs. Clarence Culbertson, secretary; Mrs. W. A. Johnson, treasurer; Mrs. Henry Scott, finance chairman; and the women chose Mrs. John Verheek as reporter.

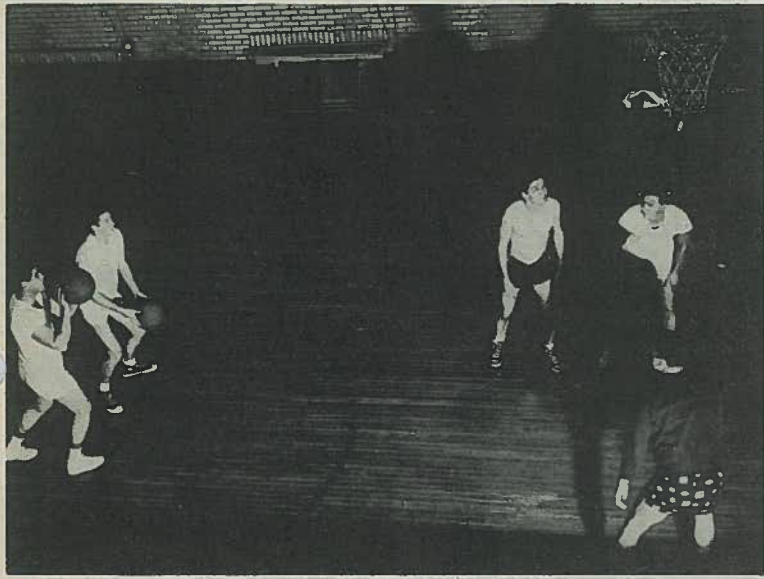
The next meeting of the newly formed guild has been set for January 5th and all interested in becoming members may contact Mrs. Verheek. Mrs. James Hocker and Mrs. James Ke were assigned to the social and bridge committee posts.

## MORE TO MOVIES THAN THAT WHICH MEETS THE EYE

The average movie cartoon of 30-40 minute duration requires more than 15,000 individual drawings.

The movie featured at your local cinema running for about two hours if rolled from reel and laid on the ground would be long enough to reach approximately two miles in distance.





Practice began last week for approximately 130 employees who have entered the project basketball league. Shown above are members of several teams practicing foul shooting in preparation for the opening date.

## Thirteen Teams Enter Basketball League, Action To Begin January 3rd

A meeting held at the Portsmouth YMCA, December 6th, has resulted in the formation of the Kiewit Basketball League consisting of 13 teams. Several teams have already held practice sessions in preparation for the opening league play on Monday, January 3rd.

All games are to be played at the Washington Grade School Gymnasium on 11th Street in Portsmouth with two games being played each week night except Fridays beginning at 7:00 P. M.

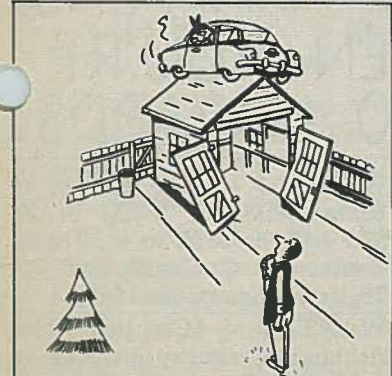
Teams will compete under regulation rules with the exception of rule 10 concerning fouls in the last three minutes of play.

Managers of league teams voted that during the last three minutes all common fouls that would normally draw two free throws will be awarded the regular "bonus one plus one". Fans will note the new rule change effective this year concerning the "bonus" free throw which states that if the first free throw is successful an additional free throw is awarded. Last season if the first throw was good a player did not receive a "bonus" throw.

Entries in the league include the following teams: Personnel Clerks, Process Engineers, Heavy Construction, Grinnell Field Office, Sheet Metal, Grinnell Engineers, Engineers, Reynolds-Newbery, Timekeeping, Pipe Fab, and Building Services. All project employees are invited to participate on league teams and may attend any of the games played at the gym.

Plans call for each team to play all other teams once during the regularly scheduled season with a round-robin or some type of special post-season tournament to close the season.

"DO UNTO the other fellow what he'd like to do to you—only do it first."



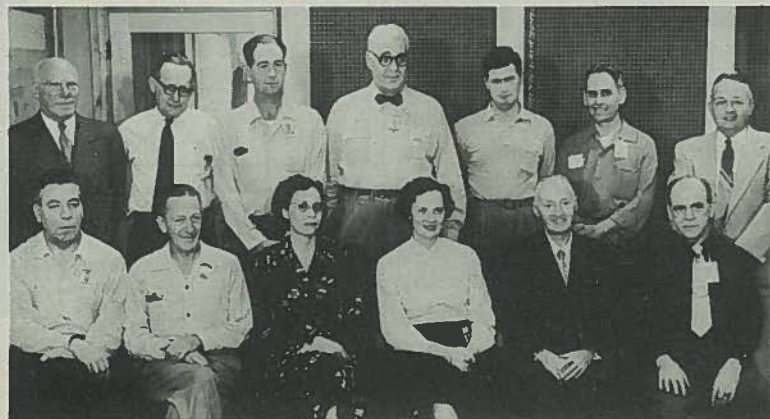
"I TOLD YOU NOT TO GET POWER STEERING."

## Fencers Change Site To Wilson Grade School

The project fencing club, sponsored by the recreation division, is now meeting at the Wilson Elementary School on Campbell Avenue in Portsmouth. The group had been holding session at the armory until December 15th.

The next scheduled meeting will be Wednesday, December 22 and all employees who are interested in the club may contact Lee Kadel of GKS or Leo Johnson of PKS audit.

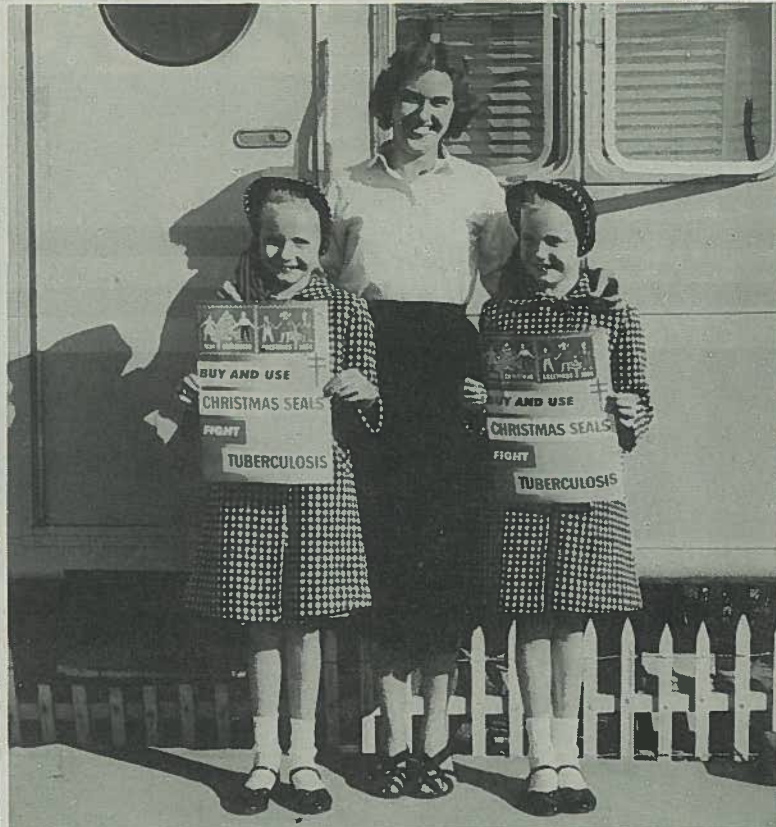
Instruction is offered free of charge with a limited amount of equipment available for beginners. Interest in the ancient sport has grown considerably and persons who would like to watch matches are invited to visit the gym on any Wednesday evening at 7:30 P. M.



Shown above are employees of the Reynolds-Newbery Fiscal Unit, under the direction of J. C. Foust, who are responsible for all accounting, payroll, and timekeeping functions for the joint venture. Pictured are (sitting left to right) F. J. Roybal, time supervisor; V. Anderson, ass't. time supervisor; Edna Edwards, senior accounting clerk; Louise Murphy, senior accounting clerk; Billy Walsh, ass't. paymaster; and G. McKenzie, senior accountant. Standing: E. E. Crout, chief accountant; D. O. Shelly, paymaster; J. C. McCambridge, chief timekeeper; A. C. Reed, accountant; J. W. Hill, accounting clerk; K. P. Hoskins, field supervisor; and J. C. Foust, director of the operation.

## Psychologist Invents Cage Game

Did you know that basketball is one of the few games played in America that holds the distinction of being truly American in origin. The game was invented by Dr. James Naismith, a lecturer in psychology at the YMCA training school in Springfield, Massachusetts in 1891.



Shown above are twin daughters and wife of James O. Kerwood, instrumentman for PKS, posing for the Ohio Tuberculosis and Health Association. According to Duncan Thorp, the Association's Director of Public Relations, the twins have been selected as Pike County's Christmas Seal Twins. In helping to promote the 48th Christmas Seal Sale, the twins, Janice (left) and Joyce, very appropriately inaugurate the first "twin seal" in history. Mrs. Kerwood states that neighbors cannot tell the eight year old twins apart, but the clue is that Janice is left-handed and Joyce is right-handed. Originally from Ripley, W. Va., the family has resided at the Piketon Trailer Village for the past two years.

## Safety Scoreboard

1954	1953
THROUGH NOVEMBER	
LOST TIME ACCIDENTS	
53	28
GOV'T VEHICLE ACCIDENTS	
16	15
TOTAL EMPLOYMENT	
17,623	11,745
THINK—SAFETY PAYS	

I wept because I had no shoes until I met a man who had no feet.

## Santa Completes First Of Tour—More Follows

Hundreds of area youngsters in the Portsmouth Atomic Area were given a special "Christmas Treat" Wednesday and Thursday of this week as Santa busily started the first leg of his visits to the area trailer villages and housing projects.

Dancing with glee to "Kris Kringle's" hearty "Ho-Ho-Ho", and firing questions at speeds comparable to those breaking the sound barrier, children swarmed over the Recreation Division auto which is speeding the roly-poly old gentleman from camp to camp.

Come Tuesday, December 21, the traditional old sack will be loaded again and Santa will whisk through the remainder of his schedule. For the convenience of area families who have not yet seen the schedule printed in the last edition of THE ATOMIZER the stops yet to be made are as follows:

TUESDAY, December 21, 5:00 P. M., Maugers; 5:30 P. M., U. S. 23; 6:00 P. M., Blairs; 6:30 P. M., Hughes; 7:00 P. M., Western Hills.

WEDNESDAY, December 22, 3:00 P. M., Hunts; 3:40 P. M., Owens; 4:00 P. M., Pleasant Acres and Rainbow; 4:30 P. M., Givens; 5:00 P. M., Brooklyn; 5:35 P. M., Little Beaver; 6:10 P. M., Hunters; 6:45 P. M., Wrights; 7:00 P. M., Sunset; 7:40 P. M., Atomic.

THURSDAY, December 23, 3:30 P. M., Riverview Inn; 4:00 P. M., Jasper Gardens; 4:35 P. M., Jones; 5:00 P. M., Sunfish; 5:45 P. M., Schmidts and Nelsons; 6:30 P. M., Riverview; 7:10 P. M., Piketon; 7:50 P. M., Plateau; 8:15 P. M., Scioto Ranch (Sargents Church).

## MILES AND MILES OF DUCT

(Continued from page 2) ected for a private concern a total of 12,000 six-room houses could be supplied with heating plants.

Thus, with the erection of duct lines and their connection with fans, another step in the Koch heating and ventilating contract is completed.

# BOWLING

## BOWLING LEAGUES

TEAM	WON	LOST	PTS.
WAVERLY WOMEN'S NO. 1			
Pleasant Acres	25½	7½	35½
Little Beaver	18½	14½	25½
Beril's	17	16	23
Stewburners	16	17	23
Wakefield	17	16	23
Ranchers	15½	17½	21½
Piketon Park	17	16	21
N & M	16½	16½	20½
Atomic Store	15	18	19
Way's Foods	14½	18½	18½
Flannery's Grocery	13	20	18
Hunters	12½	20½	15½

TEAM	WON	LOST	PTS.
WAVERLY WOMEN'S NO. 2			
Mobile Homes	23	4	32
Hoot Owls	20	7	27
St. Clair Trailers	14	13	20
Givens	12	15	15
Jasper	11	16	14
Noel's Market	11	16	14
Five Pins	10	17	13
C. B. S.	7	20	9

TEAM	WON	LOST	PTS.
ATOMIC MIXED			
Roda-Officer	24	9	33
Thomas-Fockler	21	12	27
Hutchings-Barber	15	18	21
Doner-Sewards	15	18	19
Hornberg-Wilson	12½	20½	17½
Sollott-Lehman	11½	21½	14½

TEAM	WON	LOST	PTS.
CHILLICOTHE KIEWIT			
A. M. Kinney	24	12	34
Sad Sacks	23	13	30
Tubers	18	18	25
PES	18	18	23
Hill Billies	16	20	22
Rambling Wrecks	17	19	22
Riff-Ruffs	15	21	19
Keplers	13	23	17

TEAM	WON	LOST	PTS.
WAVERLY MIXED			
Brown-Bashers	15	9	21
Rhodes-Wells	14	10	20
Parker-Murphy	13	11	17
Reeves-Moxley	14	10	17
Pinta-Emery	11	13	14
Wagner-Hathaway	10	14	14
Taylor-Porterfield	9	15	13
Vulgamore-Shoemaker	10	14	12

TEAM	WON	LOST	PTS.
CIMOTA WOMEN'S			
L. O. L.	18	9	23
Sleeper Weepers	13	14	19
Alley Cats	12	15	16
Gutter Queens	11	16	14

## HONOR ROLL

### MEN

High Three Game Series

FRANCIS WAGNER

Waverly Mixed — 248

High Single Game

ED LYONS, Jackson Mens—619 tied with HOPKINS, Jackson Mens—619

### WOMEN

High Three Game Series

CARLETTA BUSH

Portsmouth Mixed — 238

High Single Game

SUE SEWARDS

Chillicothe Mixed — 594

TEAM	WON	LOST	PTS.
PORTSMOUTH MIXED			
Lucky Strikes	32½	12½	42½
Hoboes	26½	18½	38½
4 Strikes & A Spare	25	20	33
Strike Outs	24	21	33
Alley Burners	24	21	33
Atoms	21	24	28
Rovers	21	24	27½
Shanty Boat Irish	20	25	26
Alley Oops	19	26	26
Gutter Rats	19½	25½	25½
Wood Choppers	19	26	25
Big Hams	20	25	24

TEAM	WON	LOST	PTS.
JACKSON MIXED			
Bonfini-Hamilton	22	11	30
Reppert-Zint	20	13	29
Jernigan-Rutherford	16	17	21
Bakels-Ruppender	16	17	21
DeYoung-DeYoung	13	20	17
Fisher-Martin	12	21	14

TEAM	WON	LOST	PTS.
JACKSON MEN'S (Second Round)			
PKS	6	0	8
Architects	4	2	6
Grinnell	4	2	6
R-N	4	2	5
Pleasant Acres	3	3	4
Accounting	3	3	4
R-N Estimating	4	2	4
G & V	2	4	3
A. M. Kinney	2	4	3
Champs	2	4	2
PKS Progress	1	5	2
Grinnell Operators	1	5	1

TEAM	WON	LOST	PTS.
WAVERLY MEN'S			
Reynolds-Newbery	26	10	35½
Cooper's Store	26	10	34
Dodgers	22½	13½	30
Strike Outs	20	16	27
Schmidts	16	20	22
Sheet Metal	15	21	21
Giants	12	24	15
Moores	6½	29½	7½

## ATOMIC SMALL-BORE LEAGUE

TEAM	WON	LOST	Pct.
Trojan Jrs.	3	0	1.000
Sunfish Rams	3	0	1.000
Scioto	2	0	1.000
Sunfish Bullets	2	1	.667
PKS Guards	2	1	.667
GAT Chillicothe	1	2	.333
Army Reserves	1	2	.333
GAT Portsmouth	1	2	.333
O. N. G.	0	2	.000
Sunfish Jr. Eagles	0	3	.000
PKS	0	2	.000



# EMPLOYEE CHRISTMAS PARTY AND STAGE SHOW SET



Shown above are the feature acts which have been booked for the project's Second Annual Stage Show and Christmas Party to be held at Waverly High School on Monday, December 20. Pictured upper left is the *Ruton Dog Show* which has appeared quite frequently on TV's *SUPER CIRCUS & BIG TOP*. Upper right are the *FOUR ANGELS* who are internationally known for their fine gymnastic feats and will appear on *Ed Sullivan's TV TOAST OF THE TOWN*. Shown at lower left is *Jerry Merchant* who will perform on roller skates in a dazzling and breath-taking exhibition of roller capers. *Ross and Ross (The Feet and the Fiddle)* will present a routine of comedy, music, and contortion, and also are very popular TV performers having appeared on the *GENE AUTRY* and *THIS IS THE ARMY* shows. Lower right pictures *Ed Coatney* who will present employees with *Boogie, Beguines*, an assortment of tunes with many sound effects on his harmonica. Such an array of talent packed into one show is only a small portion of what is in store for all employees who plan to attend the party which is planned and arranged by the Recreation Division.

## Record Number Of Project Families Expected For Annual Show In Waverly

Recreation Division Chief Luther F. Poling has announced the staging of the project's second annual Stage Show and Christmas Party. The colorful and entertaining show was begun last year and was a huge success as the Waverly High School auditorium overflowed with project employees and their families.

Commensurate with the growth of the project, the show, too, has experienced an increase in size as a number of top notch performers have been scheduled with other events to make the evening a real "family fun nite".

The show will begin promptly at 7:30 P. M. on Monday, December 20, at the Waverly High School auditorium with the showing of an entertaining

array of cartoons. "Santa" has promised to be on hand for all the "kiddies" and door prizes and gifts will be awarded.

The layout of pictures accompanying this story presents a thumbnail sketch of the professional acts which will highlight the show. Many long hours of planning and work have gone into the preparation of the extravaganza to make it the "biggest and best" — so plan to be there early. All project employees and their families in the area are invited.

## Project Cafeteria To Be Decorated For Holidays

M. W. Youngquist, personnel unit manager, has announced plans for the decoration of the project cafeteria for the holiday season.

The decoration committee is composed of L. F. Poling, chairman; J. E. Lyons, Reynolds-Newberry; O. L. Armstrong, Grinnell; and J. H. Frowine of GKS.

Chairman Poling states that the hall will be decorated for Monday, December 20, and that Christmas trees will also be placed in the Administration and Personnel Buildings.

## BORN—SOWKULECH WED

In a quiet and beautiful setting at the Free Will Baptist Church at Turkey Creek, W. E. "Bill" Born and Effie Gay Sowkulech were united in marriage on Sunday, December 12th.

Bill is a timekeeper for the George Koch Sons Company and the newly weds are both residents of Portsmouth. They plan to make their home at 1306 Center Street in that city in a newly furnished apartment.

"THERE ARE THOSE who do not do all their duty; there are those who say they do their duty—finally there is a third class—far better than the other two, those who do their duty and a little more."

## Christmas Dance In Portsmouth Evening Of December 25th

All employees are invited to attend a dance to be held at the Eagles Hall in Portsmouth on December 25th. The recreation division, in announcing the dance, advised that it has been scheduled for the benefit of employees and their families who will be unable to make the trip home due to the short holiday weekend.

The dance will run from 9:00 P. M. until 1:00 A. M. and will feature the music of the very popular Lou Martin Combo. Those who plan to attend should make arrangements to be at the hall early as the doors will be closed when the allotted number of tables are filled.

Identification badges are required for admission to the dance.

## CLASSIFIEDS

The following classified ads are free to any Portsmouth Area project employee but must be confined to items pertaining to transportation and lost and found articles.  
Phone 3442 or 2887

WANTED—Rider from Chillicothe to X-330 Building on 8:00 to 4:30 shift. Contact *Bill Herod*, Chillicothe 23570.

## Safety Department Praises Santa's Hiring Of "Rudolph" To Guide Sleigh Acclaimed Great Safety Innovation!

Dearest Santa:

At this time of year, our thoughts turn from our everyday labors to one of the world's most joyous seasons—Christmas. The whole countryside takes on color of bright lights, holly wreaths, wonderfully decorated trees and packages, and everywhere happy faces are singing the most joyous music—that of Christmas carols.

But Santa, can you please tell me why the workers, each one the "Santa" of his family, persist in doing their work in an unsafe manner, taking chances and unnecessary risks, knowing that Christmas and the entire holiday season may be turned into a dull, somber, and tearful occasion for their families and friends? Just imagine a home on Christmas morning —no happy children playing with their new toys—instead a family group thinking of how they are going to get along since their "Santa Claus" got hurt.

There isn't one of us who would drive a car off a high cliff onto the jagged rocks below, because we know that it would be poor judgment. Yet it is safe to say that poor judgment is the main factor in a majority of our accidents. We do not seem to believe that taking care of ourselves is an all important function, since we continually show poor judgment in our work and driving habits, instead of making our dreams come true by allowing ourselves to live out our span of life as intended by our Creator. We will never be safe from willful destruction until we create a will to stay safe, and train ourselves to the importance of using good judgment where our safety is involved. If only each person could take a look at themselves as the man in the white jacket bends over them, shakes his head, and tells the boys with the stretcher not to bother and turns away to someone else who isn't quite dead yet, what a difference it would make. How safety conscious we all would become over-night!

Santa, if only the wise men could come again and bring gifts of extra caution, courtesy, and common sense, then the traditional spirit of Christmas would spread over our highways and land.

In closing, we wish to commend you for your own safety movement—that of hiring Rudolph, the red-nosed reindeer, to guide you on your annual tour of the world when the nights are foggy or snowy.

Sincerely,  
PKS Safety Department



THAT'S WHAT HAPPENS, JUNIOR, WHEN YOU'RE NOT ALERT TO HAZARDS.

WANTED—Car pool from Sciotoville to X-326 Building on 8:00 to 4:30 shift. Call *C. D. Schneider*, Ext. 2125 or 3734.

WANTED—Two riders from Huntington or via Route 52 to jobsite on 8:00 to 4:30 shift. Contact *P. H. Wilson*, Ext. 2861 or Huntington 7605.

WANTED—Ride from Chillicothe to X-330 Bldg. on 8:00 to 4:30 shift. Contact *R. J. Luchman*, Chillicothe 35569.

WANTED — Car pool from Richmondale to X-633 or X-533 area, on 8:00 to 4:30 shift. Contact *M. C. Combs*, Ext. 28-79, or Richmondale 14472.

WANTED — Car pool from Ashland, Kentucky on 8:00 to 4:30 shift. Contact *Ronnie Lewis*, Ashland, Oak 2527.

WANTED—Riders or to form a car pool from Pomeroy, Route 124 east. Contact *Mr. Steward*, Ext. 2635.