



Published fortnightly by Peter Kiewit Sons' Co., its subcontractors and affiliated companies for all employees and their dependents on the Portsmouth Area U. S. Atomic Energy Commission project. "THE ATOMIZER" is edited and printed as a function of the PKS Recreation Division, Luther F. Poling, chief.

Editor Don Wedge
 Photographers D. J. Landstrom
 Glenn Dearing

Telephone 2887

"TO BUILD OR TO WRECK??"

*I watched them tearing a building down,
 A gang of men in a busy town,
 With a ho-heave-ho and a lusty yell,
 They swung a beam and the side wall fell.
 I asked the foreman, "Are these men skilled?
 And the men you'd hire if you had to build?"
 He gave a laugh and said, "No indeed!
 Just common labor is all I need.
 I can easily wreck in a day or two
 What builders have taken a year to do."
 I thought to myself as I went my way,
 Which of these roles have I tried to play?
 Am I a builder who works with care,
 Measuring life by the rule and square?
 Am I shaping my deeds to a well-made plan,
 Patiently doing the best I can
 Or am I a wrecker, who walks the town,
 Content with the labor of tearing down?"*

As the New Year approaches, let us ask ourselves—"Am I shaping my deeds to a well made plan, patiently doing the best I can—or am I a wrecker content with tearing down."

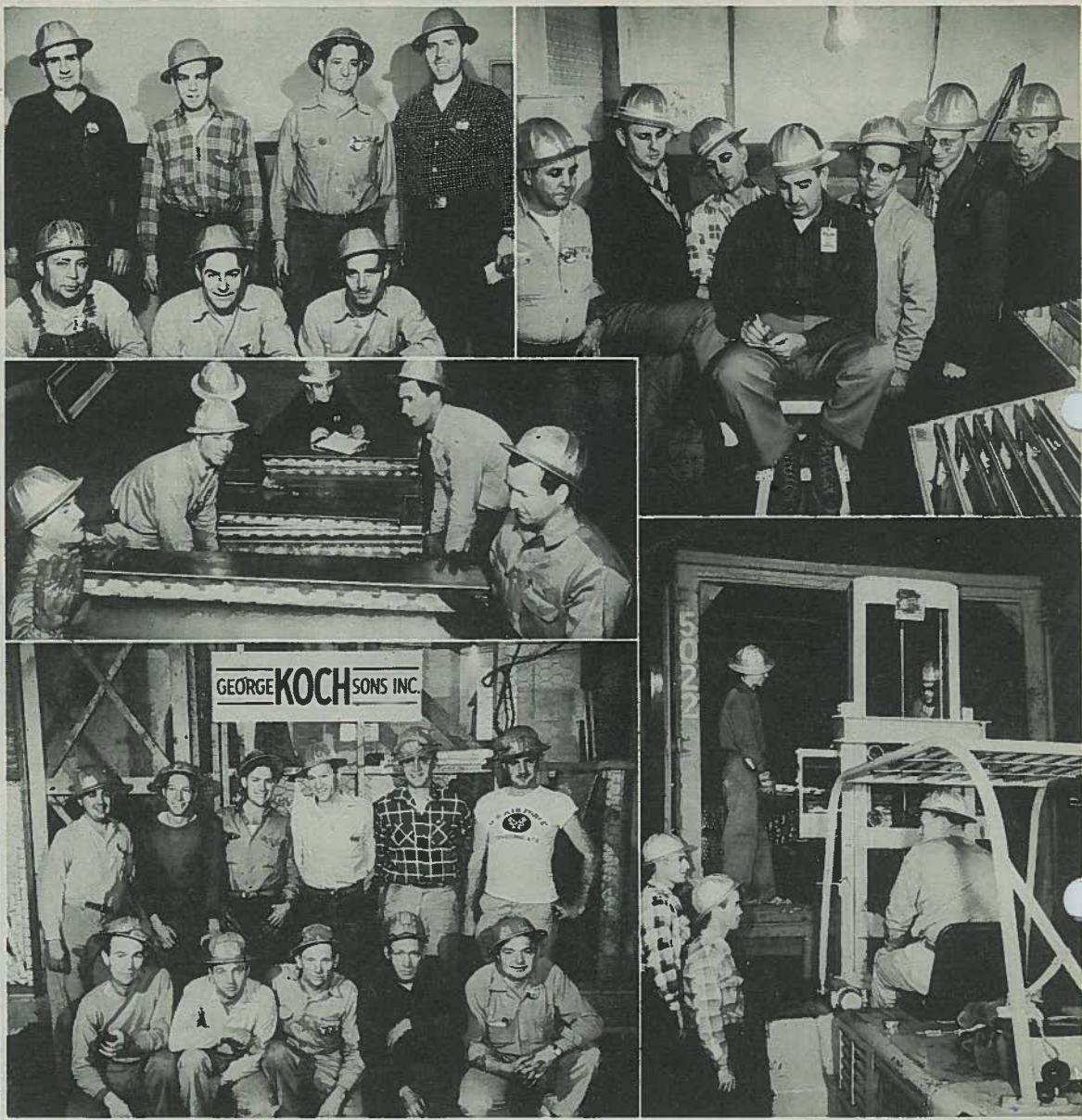
George C. Holling, General Manager
 Peter Kiewit Sons' Co.
 Portsmouth Area AEC Project



A real construction family that has travelled from projects in Fresno and Baker's Field, California; Norfolk, Virginia; and finally here at the Portsmouth project is the Don Samsal family shown above. Don is employed as an administrative assistant in the PKS Warehousing department. A very interesting geographical birth pattern is portrayed by the children who are shown left to right, Mickey (on Mother Greeta's lap) who was born in Chillicothe; Rickey, born in Findlay, Ohio; Barbara Lou who arrived in Porterfield, California; Linda, Toledo, Ohio; and Donna whose birth took place in Albuquerque, New Mexico. Don and Greeta are native "Ohioans" having been raised at Lima and Findlay, respectively. The family is pictured about to examine a few of their Christmas gifts which have been removed from their brightly decorated tree.



The expression on the little face above is only one of many similar seen on the faces of more than 4000 area kids who delighted in talking with Santa during the past two weeks. The recreation division sponsored tour is conducted annually for the benefit of employee families throughout the area. In all, more than 40 villages were visited in a period of five days.



Men responsible for the handling of sheet metal paneling are shown in the above pictorial layout of the huge operation for the George Koch Sons Inc. Upper left pictures a material handling crew which must keep the erection men supplied with material. Shown left to right in front row are: J. E. Smith, J. B. Pickering, and C. C. Gibson. Back row: R. T. Brown, H. E. Norman, H. E. Misiewicz and Foreman D. L. Wright. The center insert at left reveals another material handling crew which stacks the many panels in designated areas in the buildings. First two men in foreground left, A. Betten and right, J. W. Lee. Second row: B. B. Munch and B. B. Mitchell. Back row left, R. D. Willis and right, material checker C. A. Tice. Bottom left is an erection crew and includes (kneeling left to right): Henry Dorton, W. K. Kelley, Leroy Taylor, B. Vahun and Foreman H. L. Richard. Back row: Ray Steman, detailman; W. G. Bureson, Jim Loyd, E. Shepard, F. F. Forrest and James Cummins. The supervisory group responsible for the operation shown upper right during a meeting pictures C. H. Bishop, Gen'l Foreman; K. A. Cox, Ass't Supt.; E. J. Korbel, Ass't Supt.; Carl E. Williams, Bldg. Supt.; J. D. Dingeldein, Ass't Supt.; J. Eric Norman, Engineer; and C. O. Moore, Gen'l Foreman. Lower right shows an unloading crew working on a vendor's truck.

ERECTION OF SHEET METAL PANELING FINALE IN KOCH SONS HEATING AND VENTILATING OPERATION

Free Aid For Veterans

Peerless Chapter Number 10 of the Disabled American Veterans has announced that their office in Portsmouth is now providing help to veterans who are employed at the Portsmouth AEC installation.

Any vet who desires advice or assistance in solving any problems related to disability, insurance, G. I. Loans, school or others may receive same (free of charge) by contacting Charles L. Jones or Louis Kricker in Portsmouth. Jones, who is the adjutant at the local office, may be contacted at 1536 4th St. or call 4-9131 from 7 to 9 P. M. Service officer Kricker may be reached on phone 6-5221 at 1022 22nd St. in Portsmouth.

This service is handled by men who are well trained and qualified to handle the claims and problems of veterans, their widows and dependents. Last year more than 21 million dollars in benefits were obtained by service officers of the Disabled American Veterans.

"FAVORITE FUNNY"

A Red Cross instructor quizzing a bunch of girls asked: "Which article of clothing would you remove last if you fell into the water fully clothed?" The class broke up when one bright girl answered: "The blouse, 'cause air gets under it and acts like a buoy."

Under the overall direction of area superintendent George Spaniol the installation of sheet metal paneling and accessories is accomplished at the Portsmouth Area project.

Practically all panels arrive at the job site in trucks directly from the vendor and go to specific buildings. 12 to 14 huge tractor-trailer outfits roll in and off the project daily.

As has been the working plan throughout the Koch operation specific crews of men are delegated exact assignments. With the arrival of trucks from vendors a fast moving unloading crew moves onto the machines and the paneling is disbursed throughout the buildings. As an indication of the tremendous amount of paneling unloaded if the crew were to stack it end to end as it comes off the truck it would reach from the job site to Cincinnati, Ohio.

A special crew is in charge of stacking all panels in order that it might be distributed efficiently as erection crews call for it. Upon receipt of a specific order the material handling group immediately dispatches the insulation material to a designated area in the building.

Erection consists of placing panels, tightening bolts to hold them, and caulking spaces left in the joining process. If all panels placed were joined to form the roof of a building it would be necessary to have a building 1250 feet square. In addition

a total of 131 miles of caulking is necessary which requires that almost 5000 gallons of the sealer be on hand.

With the erection of paneling (receiving and storage, and duct erection were covered in two previous articles) this draws to a close the series of stories dealing with the George Koch Sons, Inc. operations unit. Next: Sheet Metal Supervision.

Editor's note: Immediately following the supervisory story in the January 14th edition THE ATOMIZER will feature the Grinnell Corporation.

HAROLD H. NEWCOMBE

(Continued from page 1)

construction of an oil refinery at Kawasaki, Japan. Ironically, this refinery was destroyed by Jimmy Doolittle's historic bombing in 1943.

Newcombe attended the University of Texas and graduated from the Missouri School of Mines at Rolla, Missouri with a BSCE. He and his wife, Clara, reside in Chillicothe.

YOUR FRIENDS?

"A FRIEND is someone with whom I can be sincere."

— Emerson

BOWLING

BOWLING LEAGUES

TEAM	WON	LOST	PTS.
WAVERLY WOMEN'S NO. 1			
Pleasant Acres	27½	8½	38½
Little Beaver	20½	15½	28½
Ranchers	17½	18½	24½
Pikston Park	19	17	24
Wakefield	18	18	24
Stewburners	17	19	24
Beril's	18	18	24
Way's Foods	17½	18½	22½
N & M	17½	17½	21½
Atomic Store	16	20	21
Flannery's Grocery	13	23	18
inters	14½	21½	17½

TEAM	WON	LOST	PTS.
WAVERLY WOMEN'S NO. 2			
Mobile Homes	26	4	36
Hoot Owls	21	9	29
St. Clair Trailers	14	16	20
Jasper	13	17	17
Givens	13	17	16
Noel's Market	13	17	16
Five Pins	10	20	13
C. B. S.	10	20	13

TEAM	WON	LOST	PTS.
ATOMIC MIXED			
Roda-Officer	26	10	35
Thomas-Fockler	23	13	30
Doner-Sewards	18	18	23
Hutchings-Barber	15	21	21
Hornberg-Wilson	13½	22½	19½
Sollott-Lehman	12½	23½	15½

TEAM	WON	LOST	PTS.
CHILLICOTHE KIEWIT			
A. M. Kinney	26	13	37
Sad Sacks	24	15	32
Tubers	19	20	26
PKS	20	19	25
Hill Billies	18	21	25
Gumbling Wrecks	18	21	24
Off-Riffs	16	23	20
Keplers	15	24	19

TEAM	WON	LOST	PTS.
WAVERLY MIXED			
Brown-Boshers	17	10	24
Rhodes-Weiss	16	11	23
Parker-Murphy	15	12	20
Reeves-Moxley	15	12	18
Pinta-Ernery	13	14	16
Wagner-Hathaway	11	16	15
Taylor-Porterfield	10	17	15
Vulgamore-Shoemaker	11	16	13

TEAM	WON	LOST	PTS.
CIMOTA WOMEN'S			
L. O. L.	19	11	25
Sleeper Weepers	14	16	21
Alley Cats	14	16	18
Gutter Queens	13	17	16

TEAM	WON	LOST	PTS.
JACKSON MIXED			
Bonfin-Hamilton	25	11	34
Reppert-Zint	20	16	29
Jernigan-Rutherford	19	17	25
Bakels-Ruppender	17	19	22
DeYoung-DeYoung	13	23	17
Fisher-Martin	14	22	17

HONOR ROLL

WOMEN

High Single Game

SUE SEWARDS

Chillicothe Mixed League — 219

High Three Game Series

SUE SEWARDS

Chillicothe Mixed League — 568

MEN

High Single Game

BOB HAMILTON

Jackson Mixed League — 261

High Three Game Series

WILLIAM RUPPENDER

Jackson Mixed League — 618

TEAM	WON	LOST	PTS.
JACKSON MEN'S			
PKS	7	2	10
Architects	6	3	8
Reynolds-Newbery	6	3	8
Grinnell	5	4	7
R-N Estimating	6	3	7
G & V	4	5	6
A. M. Kinney	4	5	6
PKS Progress	4	5	6
Pleasant Acres	4	5	5
Accounting	3	6	4
Champs	3	6	3
Grinnell Operators	2	7	2

TEAM	WON	LOST	PTS.
WAVERLY MEN'S			
Reynolds-Newbery	28	11	38½
Coopers Store	27	12	36
Dodgers	24½	14½	33
Strike Outs	22	17	29
Schmidts	17	22	23
Sheet Metal	16	23	22
Giants	14	25	18
Moore's	7½	31½	8½

TEAM	WON	LOST	PTS.
PORTSMOUTH MIXED			
End Of First Half			
Lucky Strikes	37½	13½	49½
Hoboes	30½	20½	43½
Strike Outs	27	24	37
Strikes & A Spare	27	24	36
Alley Burners	26	25	33
Rovers	25	26	32½
Gutter Rats	24½	26½	32½
Shanty Boat Irish	28	23	31
Atoms	22	29	29
Big Hams	23	28	28
Wood Choppers	21	30	28
Alley Oops	21	30	28

ATOMIC RIFLE LEAGUE RESULTS

TEAM	Won	Lost	Pct.
Trojan Jrs.	4	0	1.000
Sunfish Rams	4	0	1.000
Scioto	3	0	1.000
Sunfish Bullets	2	2	.500
PKS Guards	2	2	.500
Army Reserves	2	2	.500
GAT Portsmouth	1	2	.333
PKS	1	2	.333
GAT Chillicothe	1	3	.250
O. N. G.	0	3	.000
Sunfish Jr. Eagles	0	4	.000

CLARENCE WILLIAMS ROLLS HIGH 705 SERIES AT CLASSIC BOWLING LANES

Clarence Williams, of the PKS Engineering and Scheduling Division, has recently performed a bowling feat that only two other men have accomplished in the history of the Classic Lanes in Portsmouth.



CLARENCE WILLIAMS

Clerks Battle Process Engineers In Opener Of Project Cage League

Basketball league action begins for project fives Monday evening, January 3rd at the Washington grade school gym. The first game of the evening, beginning at 7:00 P. M. pits the Clerks against the Process Engineers.

In the night cap on Monday, Heavy Construction battles the Grinnell Field Office. The remainder of the schedule for the next two weeks:

- Tuesday, January 4:
- 7:00—George Koch Sons vs Grinnell Engineers
- 8:00—Grinnell Fiscal vs Engineers
- Wednesday, January 5:
- 7:00—R-N vs Timekeeping
- 8:00—Pipe Fab vs Building Services
- Monday, January 10
- 7:00—Timekeeping vs Pipe Fab
- 8:00—R-N vs Engineers
- Tuesday, January 11
- 7:00—Clerks vs Building Services

Rolling for Hudephol Beer in the Recreation League in Portsmouth, Williams cracked the magic 700 series with games of 226, 210 and 269 for a total of 705. The series is only the fourth ever to exceed 700 as one of the two other men attained the score twice.

The series entitles Williams to membership in the ABC "700 Club of America", and he will receive a certificate of merit in addition to participating in a special "700" tournament.

He has bowled actively for a short five years and is presently maintaining an average of 183 in two leagues at the Classic. The 705 series is the season high for the Recreation League and his 650 series cops honors for the National League season. Although this is his first series to break 700 he has been over 600 six times — a feat which many bowlers have yet to perform.

Clarence arrived at the Portsmouth Area project 18 months ago from his home in Huntington, W. Va. He and his wife make their home at 2208 7th Street in Portsmouth.

- 8:00—Grinnell Field Office vs George Koch Sons
 - Wednesday, January 12
 - 7:00—Grinnell Fiscal vs Grinnell Engineers
 - 8:00—Process Engineers vs Heavy Construction
- All are invited to watch the games.

TONIGHT:
IF YOU DRIVE, DON'T DRINK
IF YOU DRINK DON'T DRIVE

—AND A GOOD TIME WAS HAD BY ALL...



One of the most entertaining events of the year, staged at Waverly High School Monday, December 21st, can certainly be labeled a tremendous success as shown in the pictorial account above. The high school overflowed as close to 2000 employees and their families crowded into the gym to witness the recreation division's second annual Christmas Show. Shown upper left are members of the Kiewit Choraleers who sang carols for the huge audience. Upper center catches one of the professional acts in an extremely difficult back bend from a tiny platform, recovering a lighted cigarette from a holder. At upper right Santa presents one of many prizes to children who attended the extravaganza. An act of great interest performed to fix the spell-bound interest of the crowd pictured in the lower right photograph. A lost little gal who was so interested that being lost was of no concern watches MC Ed Coatney in lower center while lower right the juggling act receives a thunderous ovation of applause.



A real trained crow about to take one of his favorite toys from his owner is "Jimmy" shown above. Esther McMullen states that the pet was especially adept in acquiring new tricks and is constantly learning more. (See story)

B. F. BROWN BAKER PROVING WILD CROWS CAN BE TRAINED TO PERFORM MANY FEATS

Proving that "pets are where you find them", Esther McMullen, a baker for the B. F. Brown Company, has one of the most unusual in the area with her trained crow, "Jimmy".

CINERAMA

Cinerama officials in Cincinnati have announced a special holiday schedule which will be of interest to employees who might be in the area over the weekend.

Beginning with Christmas Day through Sunday, January 2 there will be a matinee every day at 2 P. M. and a performance at night at 8:30 P. M. In addition to these two daily shows, an extra show is scheduled at 5 P. M. on each Saturday and Sunday.

For New Year's Eve, tonight, there will be a midnight show beginning at 11:30 P. M. This is to be the first midnight showing of Cinerama since the attraction opened in June.

Employees who wish to attend any of the showings may make ticket reservations by contacting the Recreation Office on extension 3442.

The pet crow was found when he was but three weeks old in the woods near O'Dell's Trailer village. The mother crow had been killed and left "Jimmy" and two others to face life alone.

"Pert" Esther immediately attempted to save the small birds but two died from the intense summer heat. It was necessary to keep them in water almost constantly to survive. Sturdy Jim weathered the storm and has become a most faithful pet.

The crow is now seven months old and has lived on a steady diet of milk and Pard dog food. In order to keep cool and clean the little pet bathes in his special tub two and three times daily. Behaving as any domesticated animal, he plays with the neighbor cats and dogs who sometimes become a little rough as shown by an absence of tail feathers. Jim is a real watchdog for the village, as his loud screams quickly denote the arrival of strangers to the trailer court.

Although a very likeable pet he sometimes bothers his master and neighbors by stealing lipstick, combs, clothespins and many other small items. He loves to smoke cigarettes, but uses a "Kool" diet.

Miss McMullen, who resides with her parents (Don Baker, PKS ironworker), is quite proud of her pet and spends many hours training the bird. At the present he is being trained to speak and supposedly he said "hello" and several other words.

Esther is from Hunkhannock, Pa., and has been employed by the Brown firm since July of 1954.



"ALL RIGHT, MAGIC-MAN... AM I GONNA GET A HIT OR NOT?"

Atomic Area Ladies Clubs Plan Attractive Fashion Show



"A costume suit of wool tweed, navy flecked with white . . . The box jacket uncovers a navy crepe wrap-around blouse . . . the straw sailor is the small hat story for spring . . . and is worn straight over the head . . ." This description and many others will fill the air as the model shown and eleven others parade before the Atomic Area's women at their fashion show scheduled at the Lake White Club.

Professional Models Will Parade At Lake White Club, Mon., January 17th

The Recreation Division has announced plans for the staging of a gala style show for all women employed on the project and the wives of all project men in the area.

The show has been in the making since early fall when officials of several womens clubs at housing projects met with the Recreation Division to complete plans for the event. The Lazarus Company of Columbus will assist in the promotion of the first show of its kind strictly for the benefit of project people.

In order to be conducted in a very informal manner the models will perform at the Lake White Club around a background of colorful scenes. Plans call for two shows on January 17th, with the first at 2:00 P. M. and the evening show at 8:00 P. M.

The fashion show will last about one-half hour and will feature 12 professional models. The scenes presented will feature sportswear and dressy separates, casual daytime dresses, slacks, pedal pushers, spring suits and coats.

The most exciting news for spring in the fashion picture is the long-torso silhouette, originated in Paris by Christain Dior and now adds an interesting flair to American fashions.

Fashion Promotion director Nancy Davis of the Lazarus firm states that there will be much color this spring, for in addition to the traditional navy blue, there is fashion interest in beiges, pale mossy greens, yellow, and mauves—from pale to deep tones. There will be more costumes than ever. Dresses with jackets or with full length coats and linings to match the dress will be very popular.

There will be costume suits, many planned with a coordinated blouse worn over-blouse fash-

ion, another indication of the longer leaner look in fashion. Separates will help to create the costume look too, with the addition of two, three and sometimes four pieces. All of these will be featured in the show, and the size story will be featured prominently including Junior, Misses, Brief, and Half sizes, showing that fit, without unnecessary alteration is an important prerequisite to fashion.

For the convenience of all women employed at the plant, tickets for the 8 P. M. evening show will go on sale at the recreation office from January 5th-7th. Tickets for the remaining places at the evening show and the 2:00 performance will be sold by the various women's clubs from January 10th to 15th inclusive. The price of the tickets will be \$1.00 which will cover the cost of the dessert served at the show. The show is free of charge with the exception of the dessert, and was planned by the women to be strictly non-profit.

All ticket reservations must be made prior to January 15. Further information concerning places where tickets will be sold off the project may be obtained by calling Extension 3442.

"BIG TEN ROSE BOWL STORY"
Big Ten football teams have played in the Rose Bowl a total of 10 times since Michigan defeated Stanford 49-0 in the first ever in 1902.
During the 10 meetings the midwesterners have won 8, losing only two, outscoring their opponents 262 to 110. This is an average game score of four TD to one.
Only two Big Ten teams have been shut out in the series, Ohio State, 28-0 at the hands of California in 1921 and Wisconsin 7-0 in 1953 by Southern California.

MANY SIGNIFICANT LOST ARTICLES BEING HELD BY GUARD FORCE

The items listed below have been turned in at the Guard Force headquarters in the personnel building. Any employee claiming items should contact Bill Gillen of the Plant Protection division. Proper proof of ownership must be established.

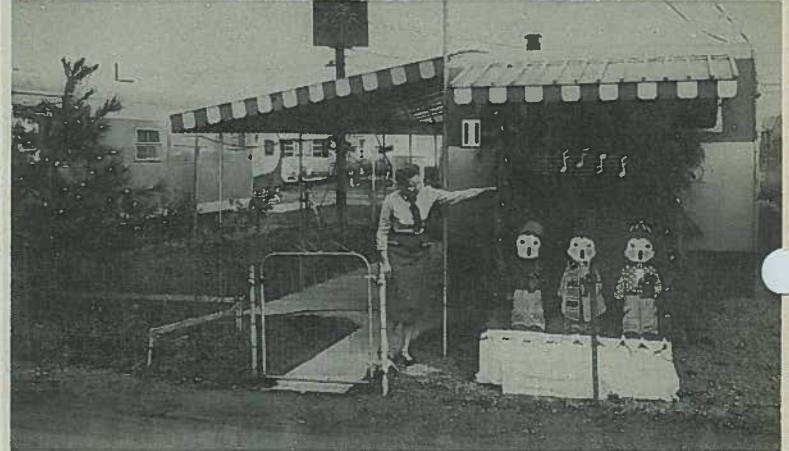
- 1 Ladies wrist watch, yellow gold, Bulova
- 1 New Testament, Leather Black Case, Zipper Closing
- 1 Pr. Eye Glasses, Shell Frame, Brown Case, With String Attached
- 1 Pr. Sun Glasses, Green Case
- 1 Pr. Eye Glasses, Gold Frames, Brown Case, Stamped J. W. Robinson, Optometrist, Camden, Tenn.
- 1 Key Case, Containing GM Automobile Keys, Blue Case
- 4 House Keys on chain with metal attached. Wording on metal, 50th anniversary, Coca Cola Bottling Co.

Thought For New Year

With the arrival of the New Year at 12:00 tonight many will be making their resolutions for the coming 12 months. Below are several which might make each of us a little happier if only a few are adopted:

- Let me be a little kinder, Let me be a little blinder
- To the faults of those about me. Let me praise a little more.
- Let me be, when I am weary, Just a little more cheery
- Let me serve a little better, those that I am striving for.
- Let me be a little braver, When temptation bid me waver.
- Let me strive a little harder, To be all that I should be.
- Let me be a little meeker, With the Brother that is weaker
- Let me thing more of my neighbor, and a little less of me.

"AN ANGRY man opens his mouth and shuts his eyes."



Shown above are two winning decorations of the Recreation Division's Home Decorating Contest which was conducted during the Christmas holidays. Selected as the area's best is the trailer of Verne Maxwell of the Sun Valley trailer court near Lucasville. The Maxwells will receive the grand prize of \$50 in addition to the many compliments for their work. Also shown (top) is the trailer of Mr. and Mrs. Frank Nemeth who were awarded the \$25 second place prize. The judging committee was composed of representatives of the various UCDS agencies in the area.

CLASSIFIEDS

The following classified ads are free to any Portsmouth Area project employee but must be confined to items pertaining to transportation and lost and found articles.
Phone 3442 or 2887

WANTED — Car pool from Ashland on 8:00 to 4:30 shift. Call *Ronnie Lewis*, Oak-2527.

WANTED—Riders from Peebles on 8:00 to 4:30 shift. Contact *R. E. Archambault*, Ext. 32-30 or Peebles 116W2.

WANTED—Riders from Portsmouth to X-326 Building on 8:00 to 4:30 shift. Contact *P. C. Wheeler*, Col. 52X, Loading Door 5.

WANTED — Riders from Wheelersburg to Ad. Bldg. via Sciotoale, Slocum Station, Minford and Lucasville. Contact *Mr. Reed*, Ext. 3295.

WANTED—Riders from Portsmouth on 8:00 to 4:30 shift, vicinity Ad. Bldg. Contact *Marvin Gale*, Ext. 3293.

WANTED—3 riders from W. Portsmouth on 8:00 to 4:30 shift. 1. Grinnell Warehouse 17. 2. Central Receiving. Contact *Miss Meyers*, 2556 or *Miss Long*, Ext. 3377.

LOST—On ground floor of X-330 Bldg. one wallet containing approximately \$60 to \$70., belonging to *F. D. Burgess*. Contained identification, driver license, etc. If found, call Ext. 3318. Reward offered.

Lucky You

— YOU MADE IT THROUGH ANOTHER YEAR WITHOUT KILLING YOURSELF IN TRAFFIC!